

APP CRS	Rwy Idg	5009
186°	TDZE	357
	Apt Elev	357

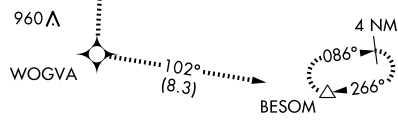
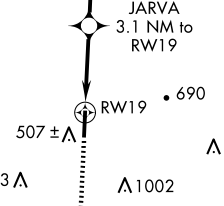
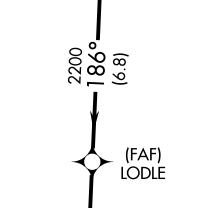
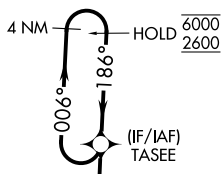
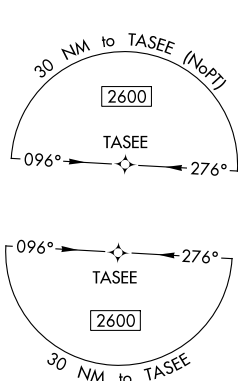
RNAV (GPS) RWY 19

RICHARD ARTHUR FLD (M95)

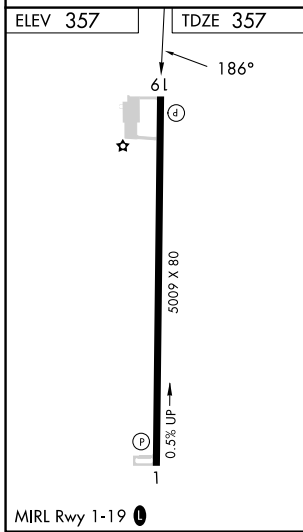
RNP APCH.
 Procedure NA at night.
 Rwy 19 helicopter visibility reduction below 1 SM NA.
 Use Jasper altimeter setting.

MISSED APPROACH: Climb to 2600 direct WOGVA and on track 102° to BESOM and hold.

JFX AWOS-3PT 119.225	COLUMBUS APP CON ★ 126.075 239.25	UNICOM 122.8 (CTAF)
--------------------------------	---	-------------------------------



Λ1167



2600	WOGVA	tr 102°	BESOM	Visual Segment - Obstacles.	4 NM Holding Pattern
				TASEE	
	JARVA 3.1 NM to RW19	LODLE		006° → 6000	← 186° 2600
	RW19	1380	2200		
	3.1 NM	2.6 NM	6.8 NM		
CATEGORY	A	B	C	D	
LNAV MDA	1080-1	723 (800-1)	1080-2	723 (800-2)	

SE-4, 16 APR 2026 to 14 MAY 2026

SE-4, 16 APR 2026 to 14 MAY 2026