

WAAS CH <b>82602</b> <b>W34A</b>	APP CRS <b>344°</b>	Rwy Ldg TDZE Apt Elev	<b>8500</b> <b>707</b> <b>707</b>
--	------------------------	-----------------------------	---

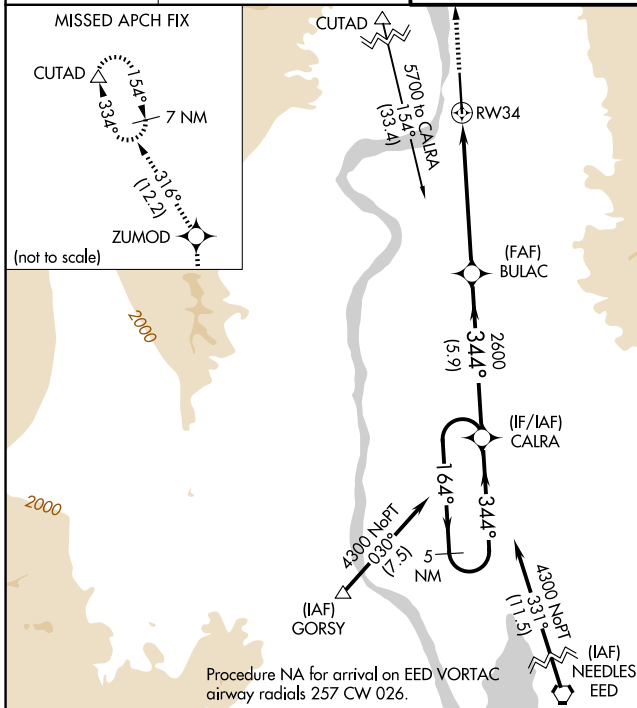
# RNAV (GPS) RWY 34

LAUGHLIN/BULLHEAD INTL (IFP)

**⚠** For uncompensated Baro-VNAV systems, LNAV/VNAV NA below -16°C (4°F) or above 54°C (130°F).  
**⚠** Rwy 34 helicopter visibility reduction below ¾ SM NA.  
 DME/DME RNP-0.3 NA.  
 Circling Rwy 16 NA at night.

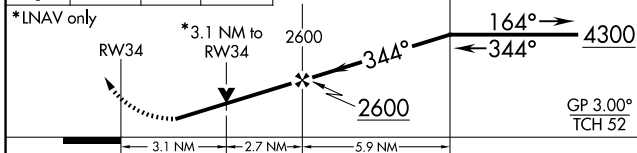
**MISSED APPROACH:** Climb to 7600 direct ZUMOD and on track 316° to CUTAD and hold, continue climb-in-hold to 7600.

ATIS <b>119.825</b>	LOS ANGELES CENTER <b>134.65 360.65</b>	BULLHEAD TOWER* <b>123.9 (CTAF) 0</b>	GND CON <b>118.25</b>
------------------------	--	--	--------------------------

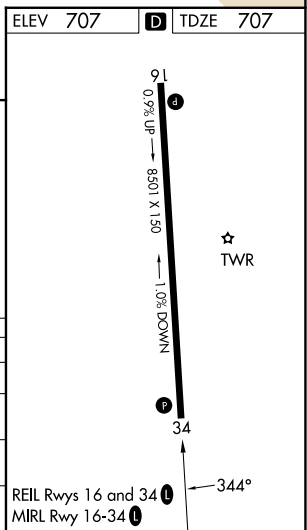


Procedure NA for arrival on EED VORTAC  
 airway radials 257 CW 026.

7600 ↑	ZUMOD ✧	tr 316°	CUTAD △	VGSI and RNAV glidepath not coincident (VGSI Angle 3.00/TCH 45). 5 NM Holding Pattern
			BULAC	CALRA



CATEGORY	A	B	C	D
LPV DA	1352-2½		645 (700-2½)	
LNAV/VNAV DA	1506-3		799 (800-3)	
LNAV MDA	1740-1¼ 1033 (1100-1¼)	1740-1½ 1033 (1100-1½)	1740-3	1033 (1100-3)
CIRCLING	1740-1¼ 1033 (1100-1¼)	1740-1½ 1033 (1100-1½)	1800-3 1093 (1100-3)	2340-3 1633 (1700-3)



SW-4, 16 APR 2026 to 14 MAY 2026

SW-4, 16 APR 2026 to 14 MAY 2026