

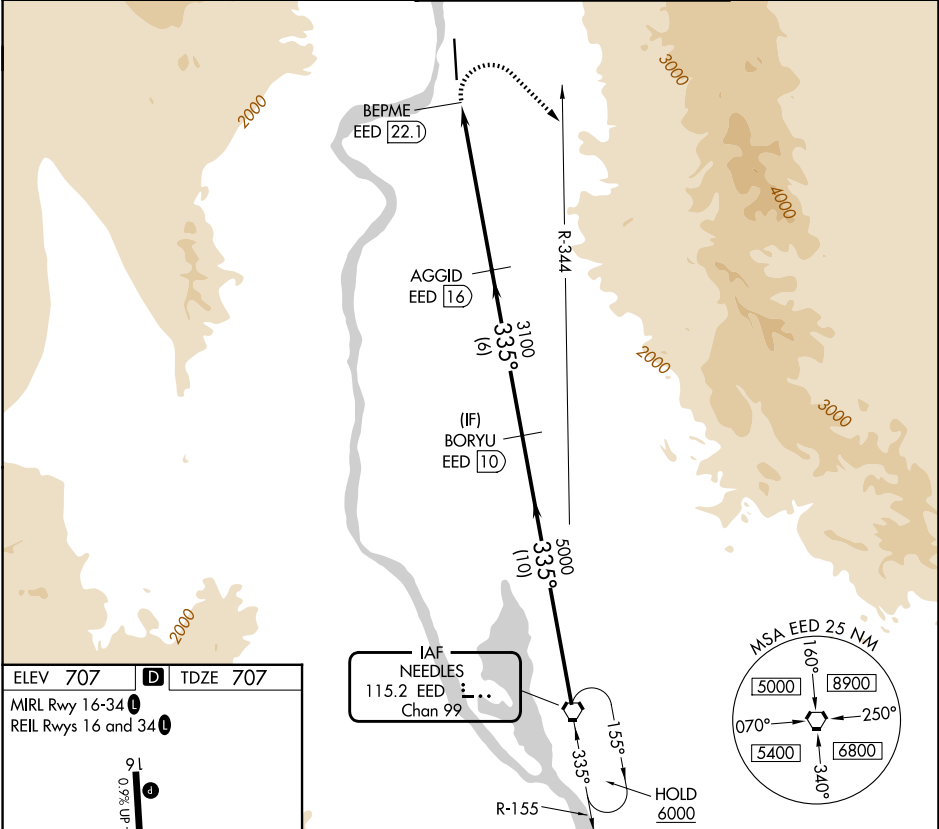
VORTAC EED <b>115.2</b> Chan <b>99</b>	APP CRS <b>335°</b>	Rwy Ldg <b>8500</b> TDZE <b>707</b> Apt Elev <b>707</b>
--	------------------------	---

**VOR RWY 34**  
LAUGHLIN/BULLHEAD INTL (IFP)

**V** Rwy 34 helicopter visibility reduction below ¼ SM NA.  
**A** DME required. Circling Rwy 16 NA at night.

MISSED APPROACH: Climbing right turn to 6000 on heading 120° and EED VORTAC R-344 to EED VORTAC and hold.

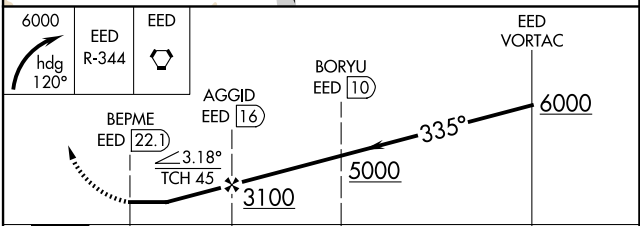
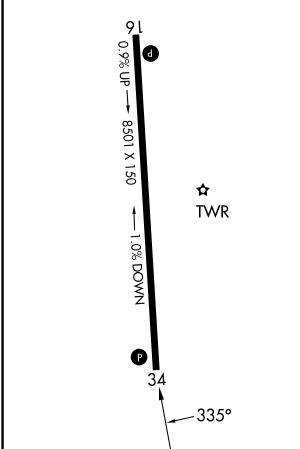
ATIS <b>119.825</b>	LOS ANGELES CENTER <b>134.65 360.65</b>	BULLHEAD TOWER★ <b>123.9 (CTAF) 0</b>	GND CON <b>118.25</b>
------------------------	--	--	--------------------------



SW-4, 16 APR 2026 to 14 MAY 2026

SW-4, 16 APR 2026 to 14 MAY 2026

ELEV 707	<b>D</b>	TDZE 707
MIRL Rwy 16-34		REIL Rws 16 and 34



	0.9	6.1 NM	6 NM	10 NM	
CATEGORY	A	B	C	D	
S-34	2840-1¼ 2133 (2200-1¼)	2840-1½ 2133 (2200-1½)	2840-3	2133 (2200-3)	
CIRCLING	2840-1¼ 2133 (2200-1¼)	2840-1½ 2133 (2200-1½)	2840-3	2133 (2200-3)	