

(NOTWN5.LAS) 23334

NORTHTOWN FIVE DEPARTURE

AL-6970 (FAA)

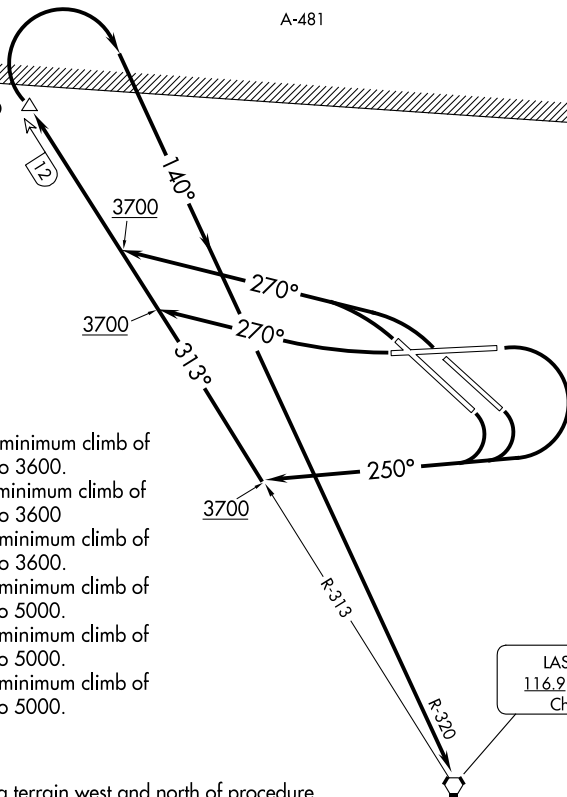
NORTH LAS VEGAS (VGT)
LAS VEGAS, NEVADA

ATIS
118.05
GND CON
121.7
UNICOM
122.95
CTAF
125.7

**TOP ALTITUDE:
7000**

A-481

RUZCO
5000



TAKEOFF MINIMUMS

- Rwy 7: Standard with minimum climb of 295' per NM to 3600.
- Rwy 12L: Standard with minimum climb of 397' per NM to 3600
- Rwy 12R: Standard with minimum climb of 379' per NM to 3600.
- Rwy 25: Standard with minimum climb of 425' per NM to 5000.
- Rwy 30L: Standard with minimum climb of 415' per NM to 5000.
- Rwy 30R: Standard with minimum climb of 390' per NM to 5000.

WARNING: Rapidly rising terrain west and north of procedure.

NOTE: DME required.

NOTE: Do not exceed 240K until established on LAS R-320 southeast bound.

NOTE: Chart not to scale.



DEPARTURE ROUTE DESCRIPTION

TAKEOFF RUNWAYS 7, 12L/R: Climbing right turn on heading 250° to intercept LAS R-313 outbound at or above 3700, thence. . .

TAKEOFF RUNWAY 25: Climbing right turn on heading 270° to intercept LAS R-313 outbound at or above 3700, thence. . .

TAKEOFF RUNWAYS 30L/R: Climbing left turn on heading 270° to intercept LAS R-313 outbound at or above 3700, thence. . .

. . . on LAS R-313 outbound to cross RUZCO/LAS 12 DME at or below 5000, then climbing right turn to intercept LAS R-320 to LAS VORTAC. Cross LAS VORTAC at or above 7000.

NORTHTOWN FIVE DEPARTURE

(NOTWN5.LAS) 08NOV18

LAS VEGAS, NEVADA
NORTH LAS VEGAS (VGT)

SW-4, 16 APR 2026 to 14 MAY 2026

SW-4, 16 APR 2026 to 14 MAY 2026