

(BOEGY.WYLND1) 21056

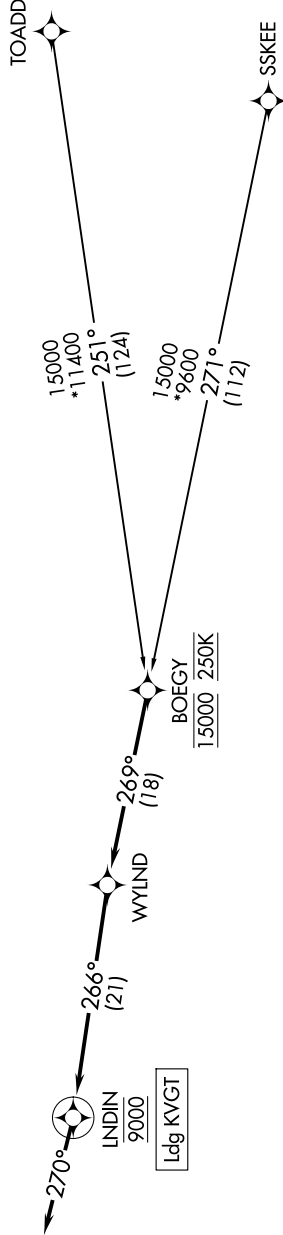
WYLND ONE ARRIVAL (RNAV)

AL-6970 (FAA)

NORTH LAS VEGAS (VGT)
LAS VEGAS, NEVADA

SW-4, 16 APR 2026 to 14 MAY 2026

LAS VEGAS APP CON
119.4 360.85
ATIS
118.05
NORTH LAS VEGAS TOWER
125.7 360.75



ARRIVAL ROUTE DESCRIPTION

SSKEE TRANSITION (SSKEE.WYLND1)

TOADD TRANSITION (TOADD.WYLND1)

From BOEGY on track 269° to WYLND, then on track 266° to cross LNDIN at 9000, then on track 270°. Expect RADAR vectors to final approach course.

NOTE: RADAR required.

NOTE: RNAV 1.

NOTE: DME/DME/IRU or GPS required.

NOTE: For non-GPS equipped aircraft, BLD, DRK, EED, FLG, GCN, IGM, PGA, PGS, and TBC DMEs must be operational.

NOTE: Chart not to scale.

SW-4, 16 APR 2026 to 14 MAY 2026

WYLND ONE ARRIVAL (RNAV)

(BOEGY.WYLND1) 25FEB21

LAS VEGAS, NEVADA
NORTH LAS VEGAS (VGT)