

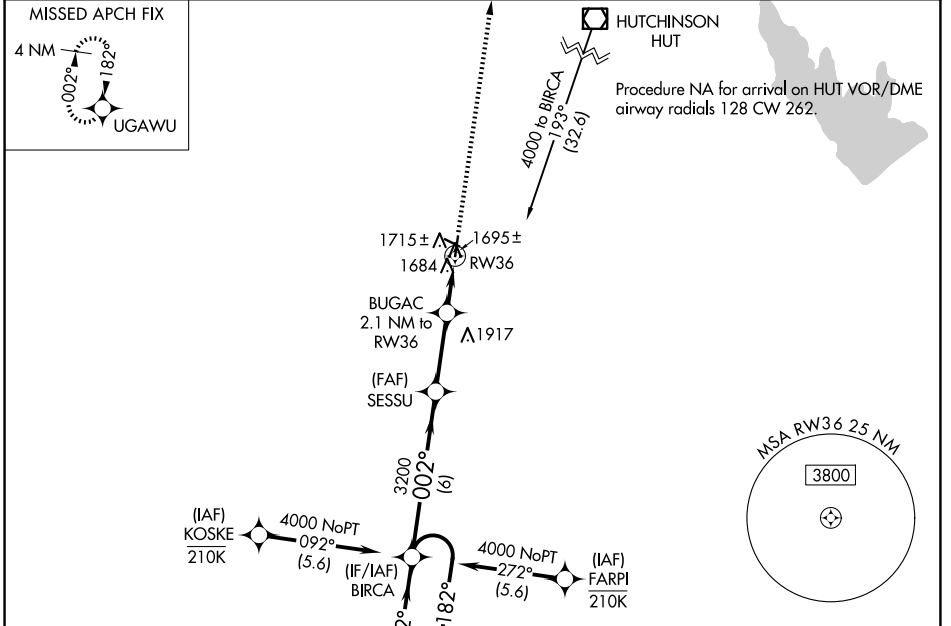
WAAS CH <b>82042</b> <b>W36A</b>	APP CRS <b>002°</b>	Rwy Ldg TDZE Apt Elev	<b>4300</b> <b>1597</b> <b>1607</b>
--	------------------------	-----------------------------	---

# RNAV (GPS) RWY 36

KINGMAN/CLYDE CESSNA FLD (9K8)

RNP APCH - GPS.	MISSED APPROACH: Climb to 4000 direct UGAWU and hold.
<p><b>▼</b> Rwy 36 helicopter visibility reduction below 3/4 SM NA.</p> <p><b>▲</b> Circling Rwy 29 NA at night.</p>	

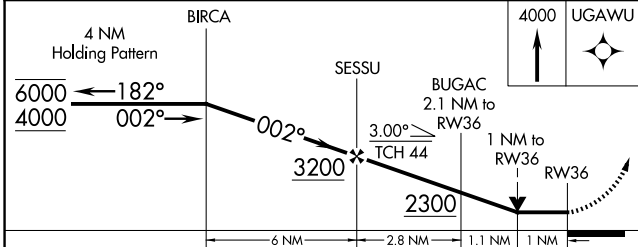
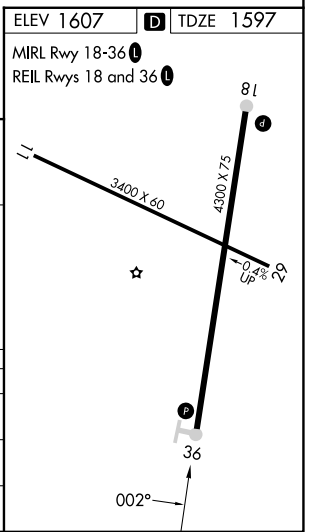
AWOS-3PT <b>119.325</b>	WICHITA APP CON <b>125.5 306.2</b>	UNICOM <b>122.8 (CTAF) 0</b>
----------------------------	---------------------------------------	---------------------------------



NC-2, 16 APR 2026 to 14 MAY 2026

NC-2, 16 APR 2026 to 14 MAY 2026

ELEV 1607	<b>D</b> TDZE 1597
MIRL Rwy 18-36 <b>L</b>	REIL Rwy 18 and 36 <b>L</b>



CATEGORY	A	B	C	D
IP MDA	1960-1 363 (400-1)			NA
LNAV MDA	1980-1	383 (400-1)	1980-1 1/8 383 (400-1 1/8)	NA
<b>C</b> CIRCLING	2040-1 433 (500-1)	2060-1 453 (500-1)	2160-1 1/2 553 (600-1 1/2)	NA