

WAAS CH 77744 W18A	APP CRS 182°	Rwy Ldg TDZE Apt Elev	5304 4161 4164
--	------------------------	-----------------------------	---

RNAV (GPS) RWY 18

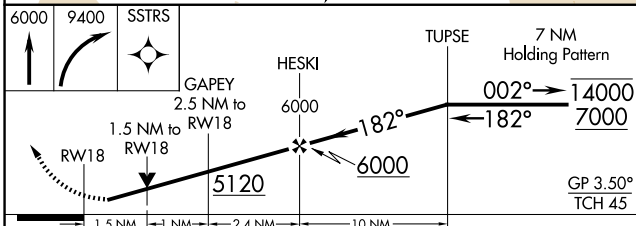
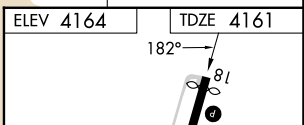
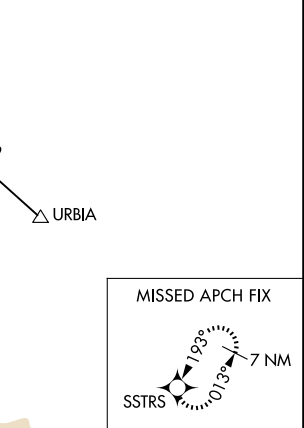
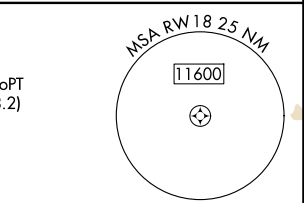
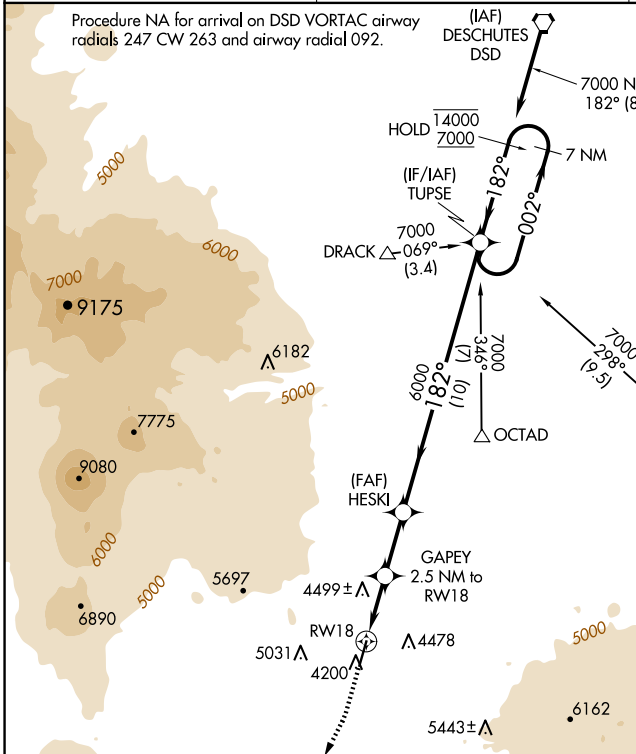
SUNRIVER (S21)

RNP APCH - GPS.

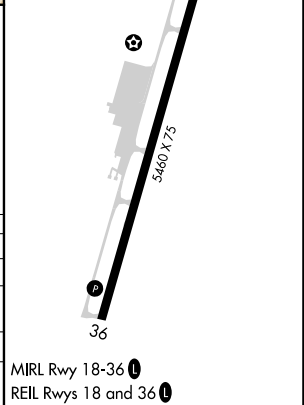
⚠ Circling NA for Cat D west of Rwy 18-36. Rwy 18 helicopter visibility reduction below $\frac{3}{4}$ SM NA. For uncompensated Baro-VNAV systems, LNAV/VNAV NA below -23°C or above 41°C.

MISSED APPROACH: Climb to 6000 then climbing right turn to 9400 direct SSTRS and hold, continue climb-in-hold to 9400.

AWOS-3PT 128.325	SEATTLE CENTER 126.15 269.475	UNICOM 122.8 (CTAF) 0
----------------------------	---	---------------------------------



CATEGORY	A	B	C	D
LPV DA		4431- $\frac{7}{8}$	270 (300- $\frac{7}{8}$)	
LNAV/VNAV DA		4760-1 $\frac{3}{4}$	599 (600-1 $\frac{3}{4}$)	
LNAV MDA	4760-1	599 (600-1)	4760-1 $\frac{3}{4}$	599 (600-1 $\frac{3}{4}$)
C CIRCLING	4900-1 736 (800-1)	5140-1 $\frac{1}{2}$ 976 (1000-1 $\frac{1}{2}$)	5660-3	1496 (1500-3)



NW-1, 16 APR 2026 to 14 MAY 2026

NW-1, 16 APR 2026 to 14 MAY 2026