

WAAS CH 50437 W17A	APP CRS 178°	Rwy Ldg TDZE 570 Apt Elev 572
--	------------------------	---

RNAV (GPS) RWY 17

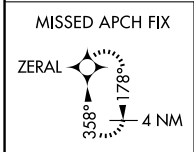
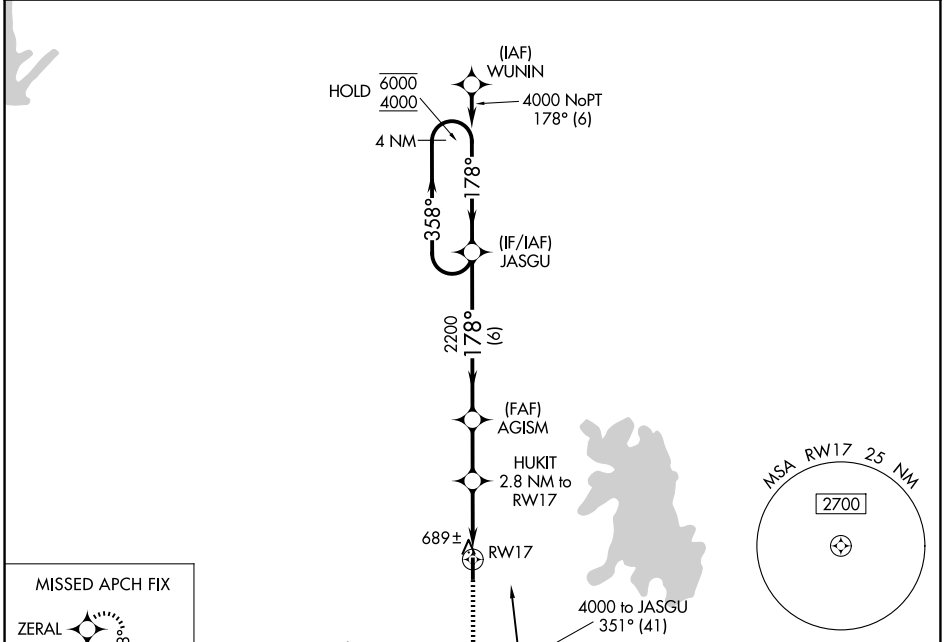
STAN STAMPER MUNI (HHW)

RNP APCH.

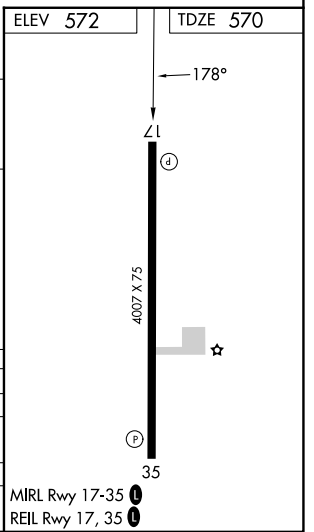
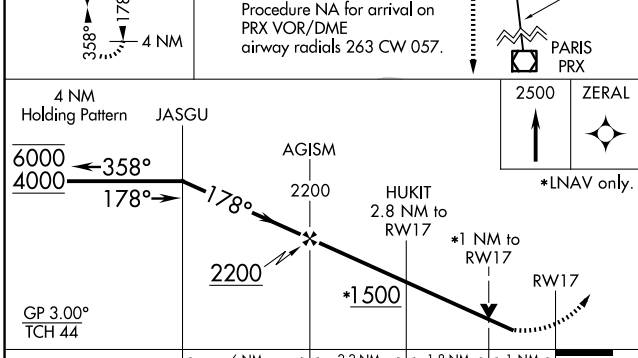
⚠ Circling Rwy 35 NA at night. Rwy 17 helicopter visibility reduction below 3/4 SM NA.
 ⚠ For uncompensated Baro-VNAV systems, LNAV/VNAV NA below -16°C or above 54°C.

MISSED APPROACH: Climb to 2500 direct ZERAL and hold.

AWOS-3 119.025	FORT WORTH CENTER 124.875 370.95	UNICOM 122.8 (CTAF) ①
--------------------------	--	---------------------------------



Procedure NA for arrival on PRX VOR/DME airway radials 263 CW 057.



CATEGORY	A	B	C	D
LPV DA		820-1	250 (300-1)	
LNAV/VNAV DA		870-1	300 (300-1)	
LNAV MDA		940-1	370 (400-1)	
CIRCLING	1220-1	648 (700-1)	1340-2 1/4 768 (800-2 1/4)	1340-2 1/2 768 (800-2 1/2)

SC-1, 16 APR 2026 to 14 MAY 2026

SC-1, 16 APR 2026 to 14 MAY 2026