

WAAS CH <b>86639</b> <b>W35A</b>	APP CRS <b>358°</b>	Rwy Ldg TDZE Apt Elev	<b>4007</b> <b>572</b> <b>572</b>
--	------------------------	-----------------------------	---

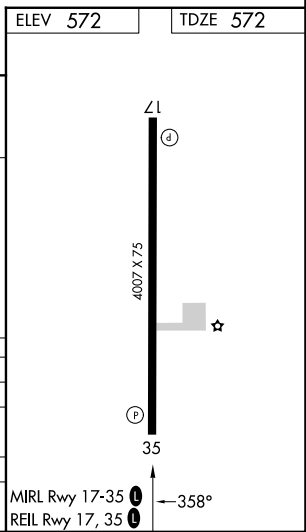
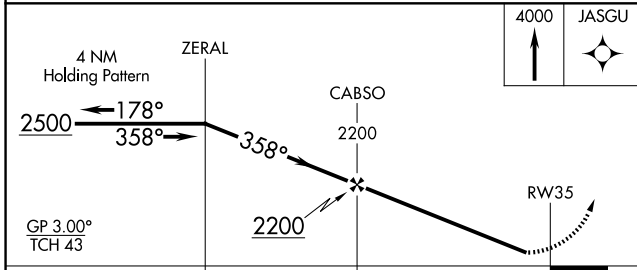
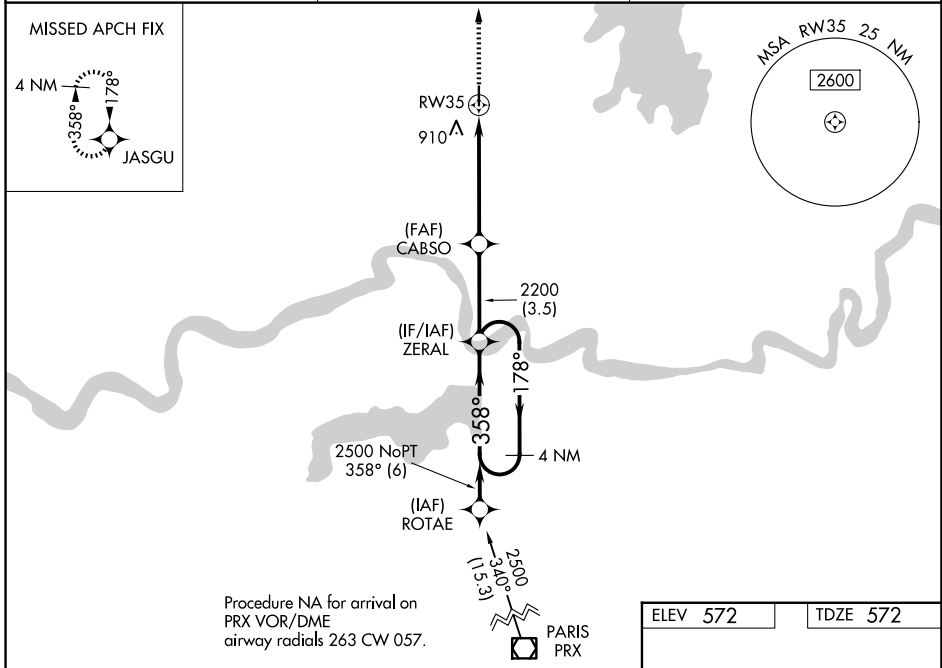
# RNAV (GPS) RWY 35

STAN STAMPER MUNI (HHW)

For uncompensated Baro-VNAV systems, LNAV/VNAV NA below -16°C (4°F) or above 54°C (130°F). Rwy 35 helicopter visibility reduction below 1 SM NA. DME/DME RNP-0.3 NA. Straight-in Rwy 35 and Circling Rwy 35 NA at night.

MISSED APPROACH: Climb to 4000 direct JASGU and hold, continue climb-in-hold to 4000.

AWOS-3 <b>119.025</b>	FORT WORTH CENTER <b>124.875 370.95</b>	UNICOM <b>122.8 (CTAF) 0</b>
--------------------------	--	---------------------------------



CATEGORY	A	B	C	D
LPV DA		822-1	250 (300-1)	
LNAV/VNAV DA		1071-1 $\frac{3}{8}$	499 (500-1 $\frac{3}{8}$ )	
LNAV MDA	1020-1	448 (500-1)	1020-1 $\frac{3}{8}$	448 (500-1 $\frac{3}{8}$ )
CIRCLING	1220-1	648 (700-1)	1340-2 $\frac{1}{4}$ 768 (800-2 $\frac{1}{4}$ )	1340-2 $\frac{1}{2}$ 768 (800-2 $\frac{1}{2}$ )

MIRL Rwy 17-35 0  
REL Rwy 17, 35 0

SC-1, 16 APR 2026 to 14 MAY 2026

SC-1, 16 APR 2026 to 14 MAY 2026