

APP CRS <b>281°</b>	Rwy Idg <b>3705</b>
	TDZE <b>686</b>
	Apt Elev <b>686</b>

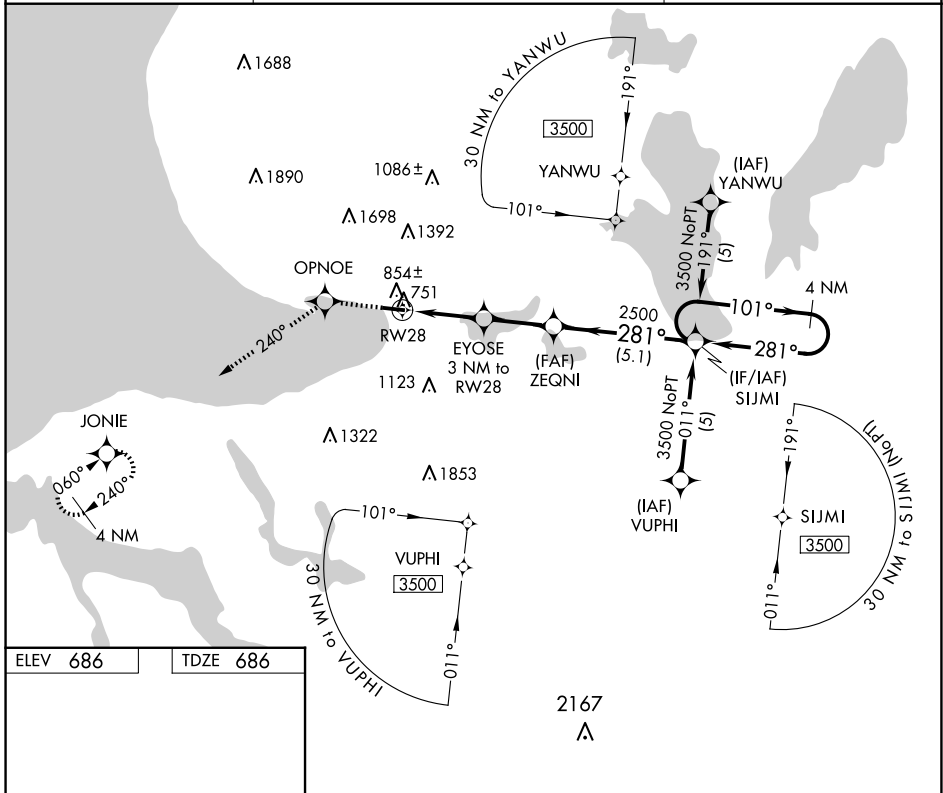
# RNAV (GPS) RWY 28

HARBOR SPRINGS (MGN)

**⚠** DME/DME RNP-0.3 NA. Helicopter visibility reduction below 1 SM NA. When local altimeter setting not received, use Pellsion altimeter setting and increase all MDAs 40 feet. Procedure NA at night.

**MISSED APPROACH:** Climb to 3400 direct OPN0E and via 240° track to JONIE and hold.

AWOS-3P <b>119.925</b>	MINNEAPOLIS CENTER <b>134.6 354.05</b>	UNICOM <b>122.8</b> (CTAF) <b>0</b>
---------------------------	---	--



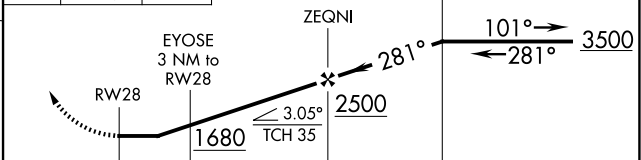
EC-1, 16 APR 2026 to 14 MAY 2026

EC-1, 16 APR 2026 to 14 MAY 2026

ELEV 686	TDZE 686
----------	----------



3400 OPN0E JONIE VGS1 and descent angles not coincident (VGS1 Angle 4.00/TCH 35).  
 ↑ fr 240°  
 4 NM Holding Pattern



CATEGORY	A	B	C	D
LNAV MDA	1120-1	434 (500-1)	NA	
CIRCLING	1380-1 694 (700-1)	1500-1¼ 814 (900-1¼)	NA	