

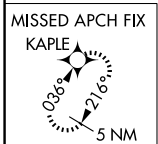
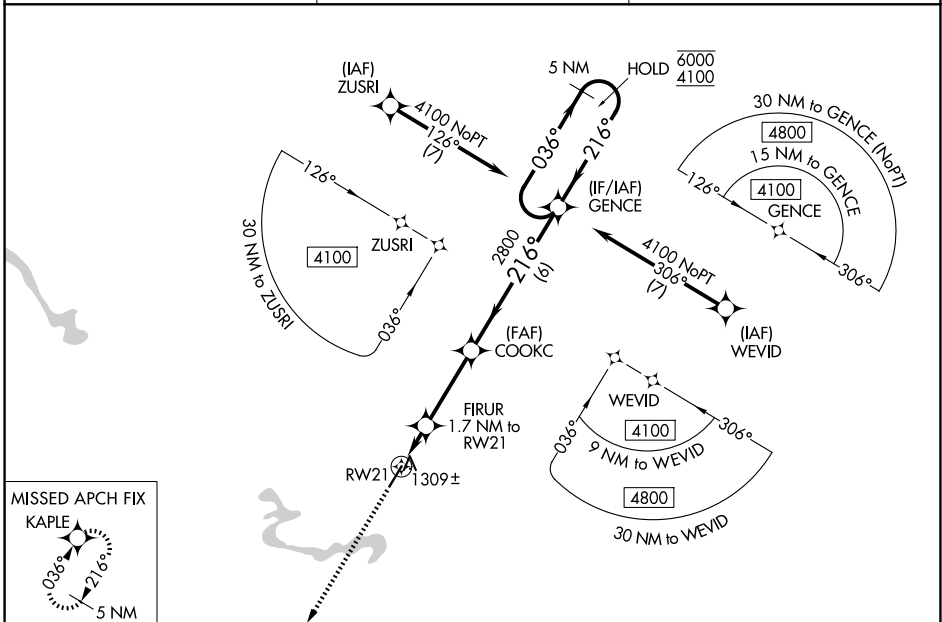
WAAS CH 77801 W21A	APP CRS 216°	Rwy Ldg TDZE 1222 Apt Elev 1222	5002
--	------------------------	---	-------------

RNAV (GPS) RWY 21

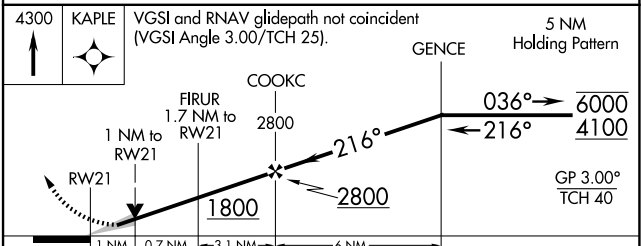
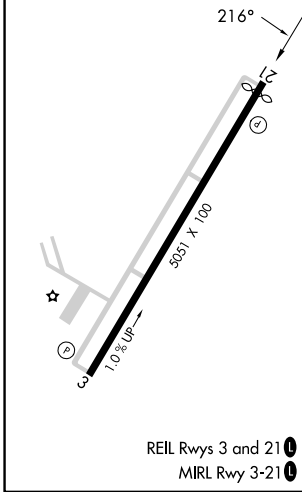
BIG SANDY RGNL (SJS)

RNP APCH - GPS.		MISSED APPROACH: Climb to 4300 direct KAPLE and hold.
▼ For uncompensated Baro-VNAV systems, ▲ LNAV/VNAV NA below -17°C or above 54°C.		

AWOS-3 120.175	HUNTINGTON APP CON 119.75 270.1	UNICOM 123.05 (CTAF) ①
--------------------------	---	----------------------------------



ELEV 1222	TDZE 1222
-----------	-----------



CATEGORY	A	B	C	D
LPV DA		1472-3/4	250 (300-3/4)	
LNAV/VNAV DA		1520-7/8	298 (300-7/8)	
LNAV MDA		1560-1	338 (400-1)	
CIRCLING	1740-1	518 (600-1)	1920-2 698 (700-2)	2020-2 1/2 798 (800-2 1/2)

SE-1, 16 APR 2026 to 14 MAY 2026

SE-1, 16 APR 2026 to 14 MAY 2026