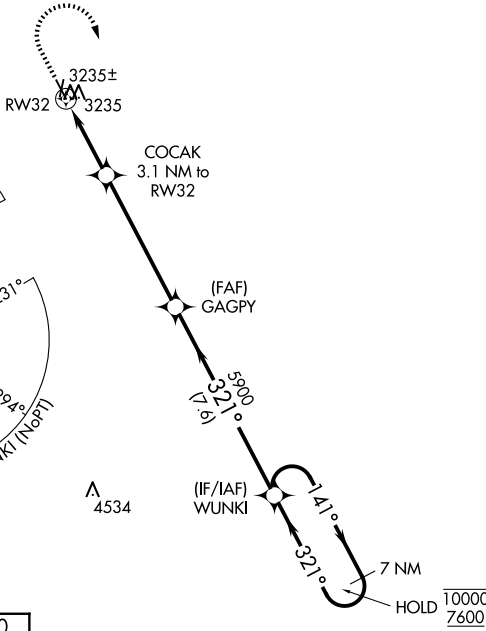
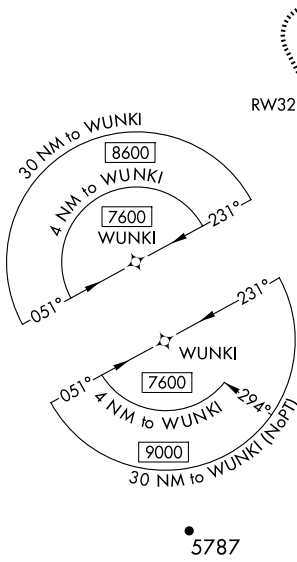


WAAS CH 82728 W32A	APP CRS 321°	Rwy Idg TDZE Apt Elev	4501 3180 3191
--	------------------------	-----------------------------	---

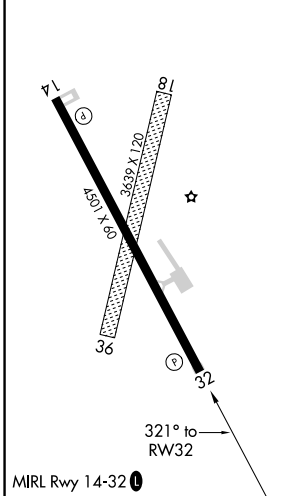
RNAV (GPS) RWY 32

BELLE FOURCHE MUNI (EFC)

RNP APCH.	Baro-VNAV NA. Use Ellsworth altimeter setting.	MISSED APPROACH: Climb to 3800 then climbing right turn to 7600 direct WUNKI and hold. Continue climb-in-hold to 7600.
NA		
DENVER CENTER 127.95 338.2	AUNICOM 122.8 (CTAF) 0	



ELEV 3191	TDZE 3180
-----------	-----------



3800 		7600 	WUNKI 	VGSI and RNAV glidepath not coincident (VGSI Angle 3.00/TCH 33).	7 NM Holding Pattern
*LNAV only RW32		COCAK 3.1 NM to RW32	GAGPY 5900	WUNKI	10000 / 7600
4200*		5900	321°	141°	GP 3.00° TCH 40
3.1 NM		5.3 NM	7.6 NM		
CATEGORY	A	B	C	D	
LPV DA	3553-1		373 (400-1)		NA
LNAV/VNAV DA	3558-1		378 (400-1)		NA
LNAV MDA	3660-1	480 (500-1)		3660-1 3/8 (500-1 3/8)	
CIRCLING	3780-1 (589 (600-1))	3820-1 (629 (700-1))	3820-1 3/4 (629 (700-1 3/4))		NA

NC-1, 16 APR 2026 to 14 MAY 2026

NC-1, 16 APR 2026 to 14 MAY 2026