

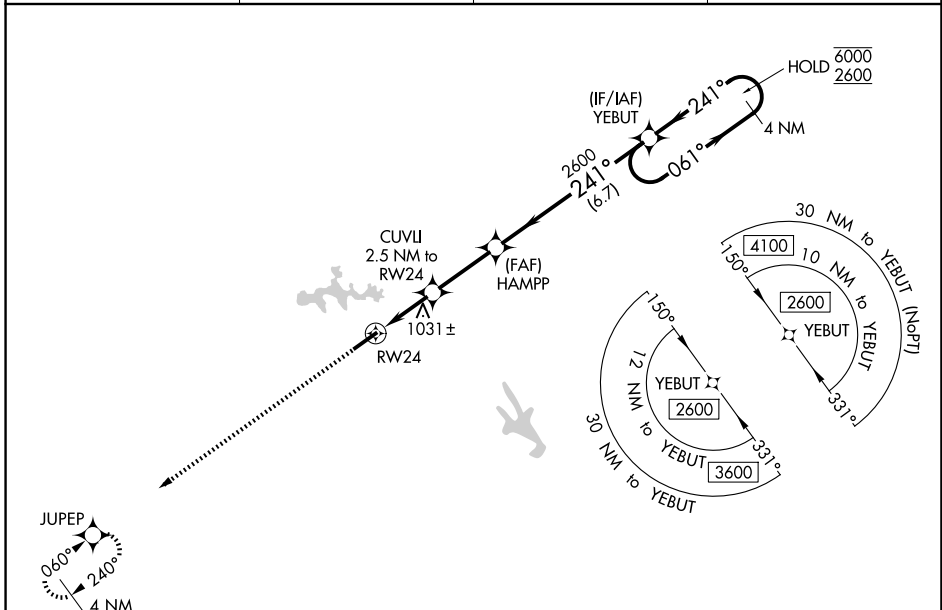
WAAS CH <b>58343</b> <b>W24A</b>	APP CRS <b>241°</b>	Rwy Ldg TDZE Apt Elev	<b>5509</b> <b>882</b> <b>882</b>
--	------------------------	-----------------------------	---

# RNAV (GPS) RWY 24

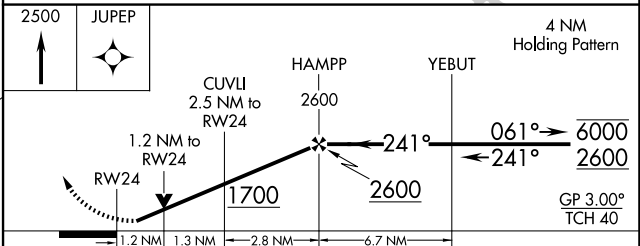
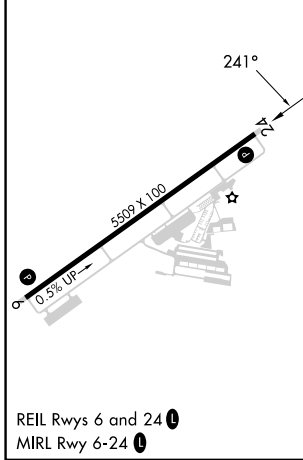
ATLANTA SPEEDWAY (HMP)

RNP APCH.	MISSED APPROACH: Climb to 2500 direct JUPEP and hold.
<p><b>▼</b> Rwy 24 helicopter visibility reduction below 3/4 SM NA.  <b>▲</b> For uncompensated Baro-VNAV systems, LVAV/VNAV NA below -16°C or above 54°C.</p>	

AWOS-3 <b>124.825</b>	ATLANTA APP CON <b>128.575 343.675</b>	CLNC DEL <b>128.575 343.675</b>	UNICOM <b>122.725 (CTAF)</b>
--------------------------	---	------------------------------------	---------------------------------



ELEV <b>882</b>	TDZE <b>882</b>
-----------------	-----------------



CATEGORY	A	B	C	D
LPV DA		1132-3/4	250 (300-3/4)	
LNAV/VNAV DA		1201-7/8	319 (400-7/8)	
LNAV MDA	1300-1	418 (500-1)	1300-1 1/8	418 (500-1 1/8)
CIRCLING	1380-1 498 (500-1)	1400-1 518 (600-1)	1700-2 1/2 818 (900-2 1/2)	1740-2 3/4 858 (900-2 3/4)

SE-4, 16 APR 2026 to 14 MAY 2026

SE-4, 16 APR 2026 to 14 MAY 2026