

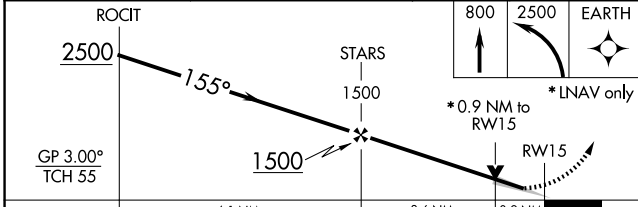
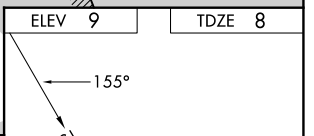
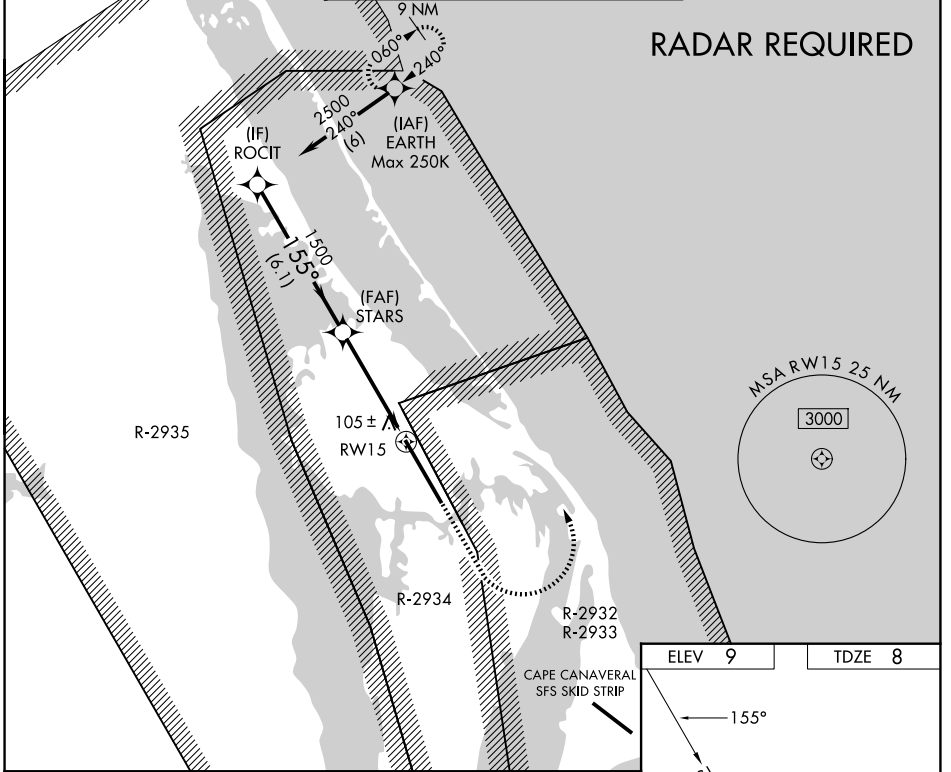
WAAS CH 50534 W15A	APP CRS 155°	Rwy Ldg 15001 TDZE 8 Apt Elev 9
--	------------------------	--

RNAV (GPS) RWY 15

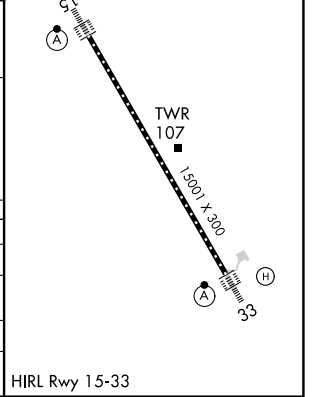
SPACE FLORIDA LAUNCH AND LANDING FACILITY (TTS)

<p>For uncompensated Baro-VNAV systems, LNAV/VNAV NA below -15°C (5°F) or above 54°C (130°F). DME/DME RNP-0.3 NA. Inop table does not apply.</p>	ALS-2	MISSED APPROACH: Climb to 800, then climbing left turn to 2500 direct EARTH and hold.

ORLANDO APP CON 134.95 281.425	NASA TOWER ★ 128.55 (CTAF) 284.0	GND CON 121.75
--	--	--------------------------



ROCIT	2500		STARS		800	2500	EARTH
	155°		1500		*0.9 NM to RW15 *LNAV only		
GP 3.00° TCH 55	6.1 NM		3.6 NM		0.9 NM		
CATEGORY	A	B	C	D	E		
LPV DA	208-1		200 (200-1)				
LNAV/VNAV DA	286-1		278 (300-1)				
LNAV MDA	360-1		352 (400-1)				
CIRCLING	420-1 411 (500-1)	460-1 451 (500-1)	940-2¾ 931 (1000-2¾)	940-3	931 (1000-3)		



SE-3, 16 APR 2026 to 14 MAY 2026

SE-3, 16 APR 2026 to 14 MAY 2026