

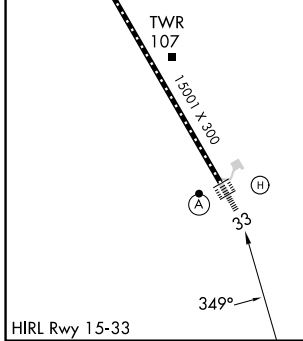
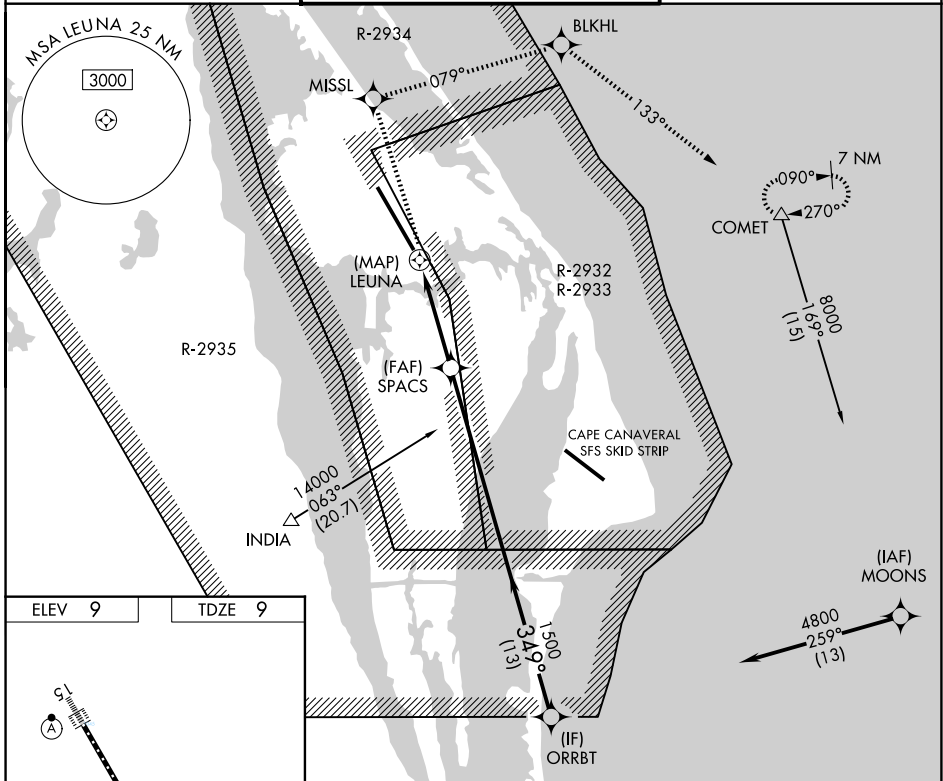
APP CRS	Rwy Ldg	15001
349°	TDZE	9
	Apt Elev	9

RNAV (GPS) RWY 33

SPACE FLORIDA LAUNCH AND LANDING FACILITY (TTS)

RNP APCH-GPS.		ALSF-2	MISSED APPROACH: Climb to 8000 direct MISSL and right turn on track 079° to BLKHL and on track 133° to COMET and hold, continue climb-in-hold to 8000.
Rwy 33 helicopter visibility reduction below 1 SM NA. Inop table does not apply. Use Melbourne altimeter setting.			

ORLANDO APP CON 134.95 281.425	NASA TOWER ★ 128.55 (CTAF) 284.0	GND CON 121.75
--	--	--------------------------



8000	MISSL	BLKHL	COMET	ORRBT	
↑	✧	✧ tr 079°	△ tr 133°	△	
SPACS LEUNA → 3.01° TCH 55 → 1500 → 349° → 4800				4800	
				Procedure Turn NA	
0.5		4 NM		13 NM	
CATEGORY	A	B	C	D	E
LNAV MDA	540-1 530 (600-1)		540-1¼ 530 (600-1¼)		
CIRCLING	540-1 531 (600-1)		1020-3 1011 (1100-3)		

SE-3, 16 APR 2026 to 14 MAY 2026

SE-3, 16 APR 2026 to 14 MAY 2026