

APP CRS	Rwy Ldg	3498
142°	TDZE	1610
	Apt Elev	1610

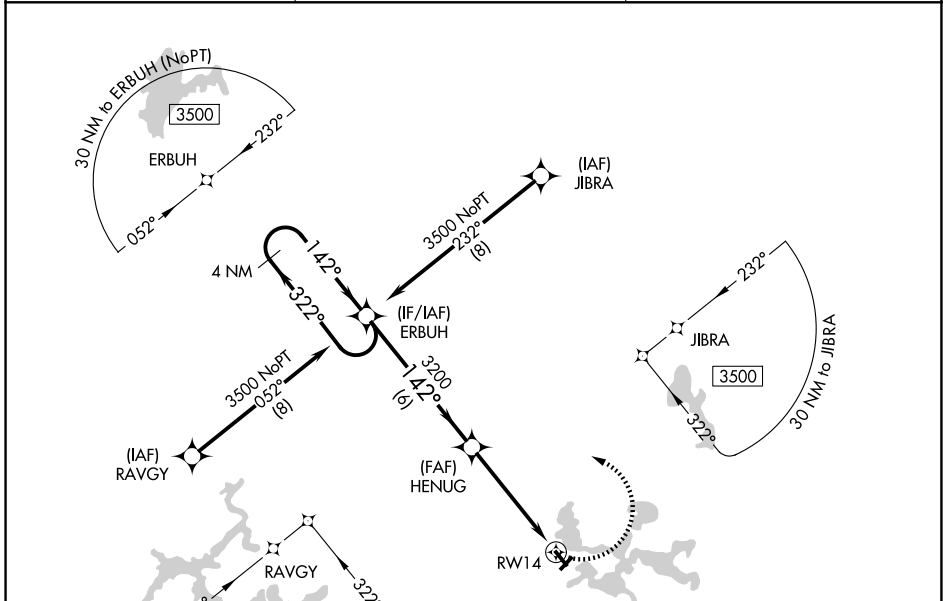
RNAV (GPS) RWY 14

MANITOWISH WATERS (D25)

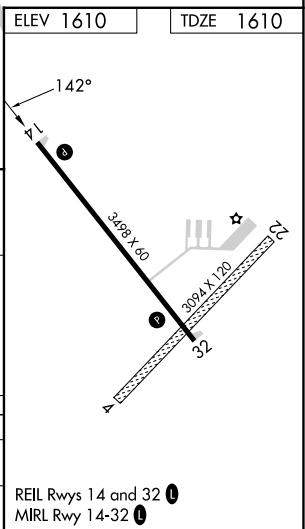
▼ Circling NA to Rws 4 and 22. DME/DME RNP-0.3 NA. Procedure NA at night. Rwy 14 helicopter visibility reduction below 1 SM NA. When local altimeter setting not received, use Minocqua-Woodruff altimeter setting; increase all MDA 40 feet, increase LNAV Cat C visibility 1/8 mile and Circling Cat C visibility 1/4 mile.

MISSED APPROACH:
Climbing left turn to 3500
direct ERBUH and hold.

AWOS-3PT 118.175	MINNEAPOLIS CENTER 133.65 281.5	UNICOM 122.8 (CTAF) ①
----------------------------	---	---------------------------------



	ELEV 1610	TDZE 1610		
4 NM Holding Pattern	ERBUH	3500		
3500	← 322°	→ 142°		
	142°	HENUG		
	3200	RWY 14		
	6 NM	4.8 NM		
CATEGORY	A	B	C	D
LNAV MDA	2100-1	490 (500-1)	2100-1 3/8 490 (500-1 3/8)	NA
CIRCLING	2100-1	490 (500-1)	2340-2 730 (800-2)	NA



REIL Rws 14 and 32 ①
MIRL Rwy 14-32 ①

EC-3, 16 APR 2026 to 14 MAY 2026

EC-3, 16 APR 2026 to 14 MAY 2026