

APP CRS 322°	Rwy Ldg TDZE Apt Elev	3498 1610 1610
------------------------	-----------------------------	---

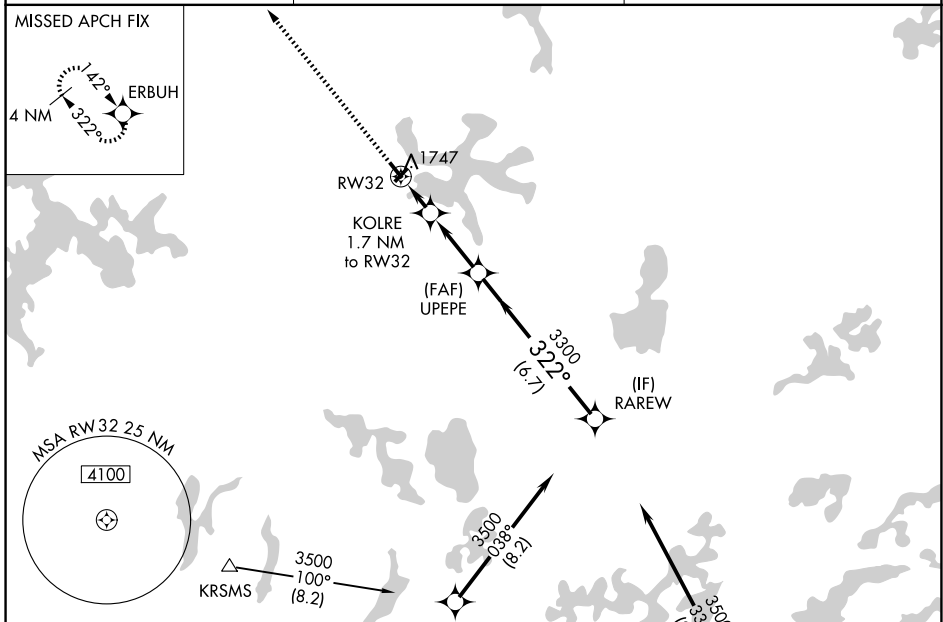
RNAV (GPS) RWY 32

MANITOWISH WATERS (D25)

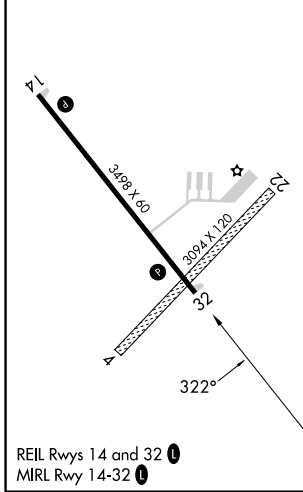
⚠ Circling NA to Rws 4 and 22. DME/DME RNP-0.3 NA. Procedure NA at night. Rwy 32 helicopter visibility reduction below 1 SM NA. When local altimeter setting not received, use Minocqua-Woodruff altimeter setting and increase all MDA 40 feet and LNAV Cat C visibility 1/8 mile and Circling Cat C visibility 1/4 mile.

MISSED APPROACH: Climb to 3500 direct ERBUH and hold.

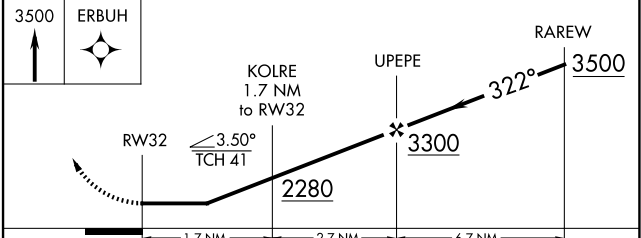
AWOS-3PT 118.175	MINNEAPOLIS CENTER 133.65 281.5	UNICOM 122.8 (CTAF) 📶
-----------------------------------	--	---



ELEV 1610	TDZE 1610
-----------	-----------



Procedure NA for arrival on RHI VOR/DME airway radials 241 CW 021.



CATEGORY	A	B	C	D
LNAV MDA	2000-1	390 (400-1)	2000-1 1/8 390 (400-1 1/8)	NA
CIRCLING	2060-1	450 (500-1)	2340-2 730 (800-2)	NA

EC-3, 16 APR 2026 to 14 MAY 2026

EC-3, 16 APR 2026 to 14 MAY 2026