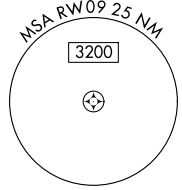


WAAS CH 40304 W09A	APP CRS 088°	Rwy Ldg TDZE Apt Elev 5074 894 895
--	------------------------	--

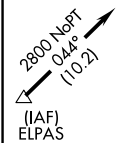
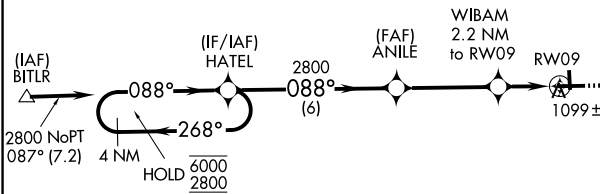
RNAV (GPS) RWY 9

MENOMONIE MUNI/SCORE FLD (LUM)

RNP APCH.		MISSED APPROACH: Climb to 1400 then climbing right turn to 2800 direct GAGNR and hold.
▽	Circling Rwy 18, 36 NA at night. For uncompensated Baro-VNAV systems, LNAV/VNAV NA below -16°C or above 54°C.	
AWOS-3PT 118.025	MINNEAPOLIS CENTER 125.3 335.6	UNICOM 123.075 (CTAF) 0



Procedure NA for arrivals at BITLR on V510 northwest bound and V413 westbound.

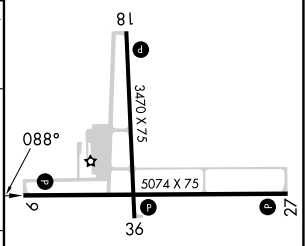
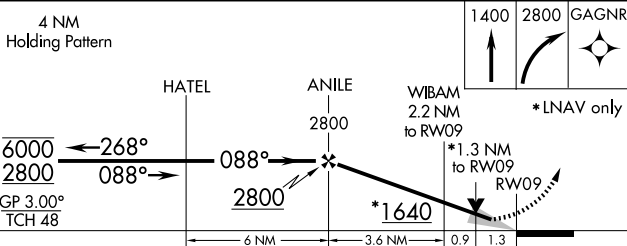


Procedure NA for arrivals at ELPAS on V26 southwest bound.



ELEV 895	TDZE 894
----------	----------

4 NM Holding Pattern



CATEGORY	A	B	C	D
LPV DA		1144- ³ / ₄	250 (300-1)	NA
LNAV/VNAV DA		1423-1 ¹ / ₂	529 (600-1 ¹ / ₂)	NA
LNAV MDA	1360-1	466 (500-1)	1360-1 ³ / ₈ 466 (500-1 ³ / ₈)	NA
CIRCLING	1420-1 525 (600-1)	1800-1 ¹ / ₄ 905 (1000-1 ¹ / ₄)	1820-2 ³ / ₄ 925 (1000-1 ³ / ₄)	NA

REIL Rwy 9 and 27
MRL Rwy 9-27 and 18-36

EC-3, 16 APR 2026 to 14 MAY 2026

EC-3, 16 APR 2026 to 14 MAY 2026