

RNAV (GPS) RWY 13

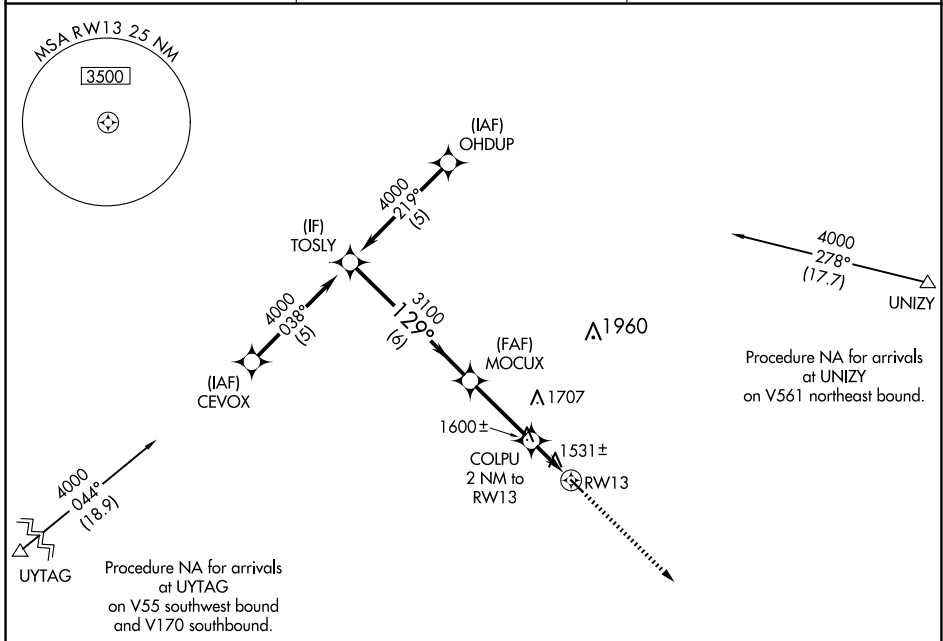
COOPERSTOWN MUNI (S32)

| | | |
|-------------|----------|-------------|
| APP CRS | Rwy Idg | 3500 |
| 129° | TDZE | 1424 |
| | Apt Elev | 1424 |

NA DME/DME RNP-0.3 NA. Visibility reduction by helicopters NA. When local altimeter setting not received, use Jamestown altimeter setting and increase all MDA 100 feet and increase LNAV Cat C visibility 1/4 mile.

MISSED APPROACH: Climb to 3100 direct RAKGU and hold.

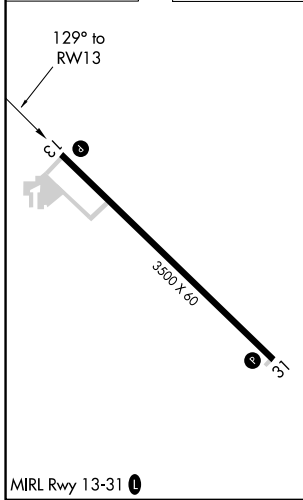
| | | |
|-------------------------|---|------------------------|
| AWOS-3 118.75 | MINNEAPOLIS CENTER 132.15 269.6 | CTAF 122.9 0 |
|-------------------------|---|------------------------|



NC-1, 16 APR 2026 to 14 MAY 2026

NC-1, 16 APR 2026 to 14 MAY 2026

| | |
|-----------|-----------|
| ELEV 1424 | TDZE 1424 |
|-----------|-----------|



VGSI and descent angles not coincident (VGSI Angle 3.00/TCH 25).

Procedure Turn NA

3100 RAKGU

4000 TOSLY

3100 MOCUX

2100 COLPU 2 NM to RWY 13

3.04° TCH 40 RWY 13

| CATEGORY | A | B | C | D |
|----------|--------|-------------|-------------------------|----|
| LNAV MDA | 1860-1 | 436 (500-1) | 1860-1¼ 436 (500-1¼) | NA |
| CIRCLING | 1880-1 | 456 (500-1) | 1880-1½ 456 (500-1½) | NA |

6 NM 3.1 NM 2 NM

MIRL Rwy 13-31 0

COOPERSTOWN, NORTH DAKOTA
Orig 18NOV10

COOPERSTOWN MUNI (S32)
47°25'N-98°06'W
RNAV (GPS) RWY 13