

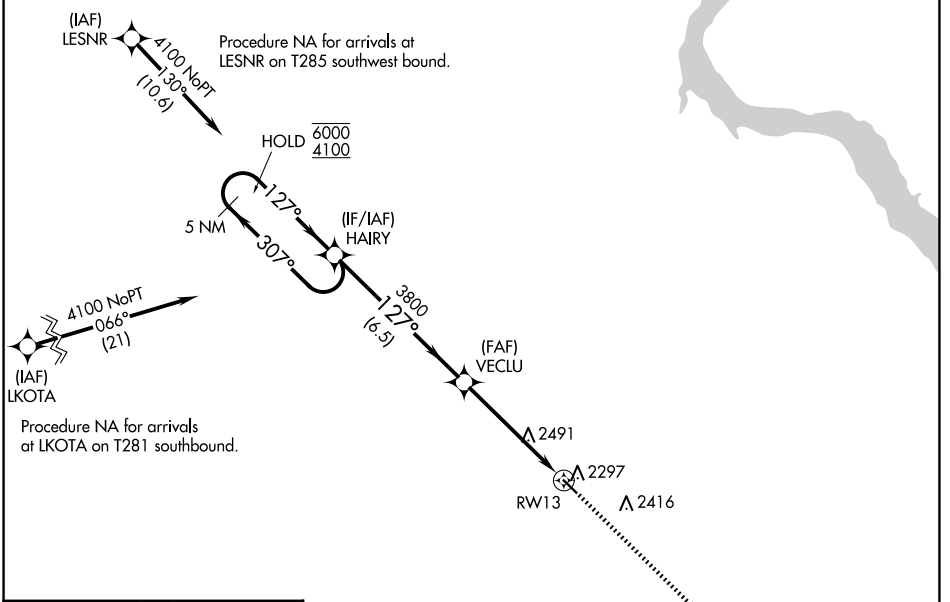
APP CRS	Rwy Idg	3799
127°	TDZE	2170
	Apt Elev	2175

RNAV (GPS) RWY 13

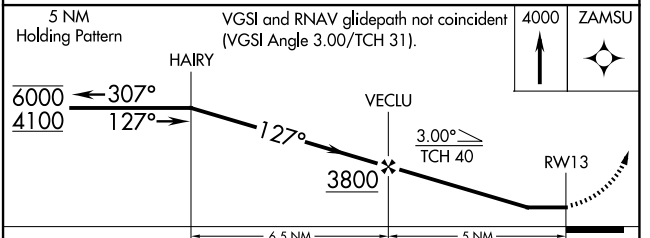
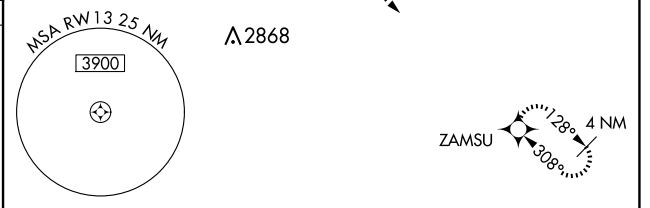
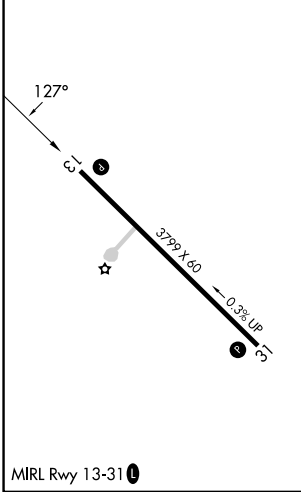
GREGORY MUNI/FLYNN FLD (9D1)

RNP APCH.	Rwy 13 helicopter visibility reduction below 3/4 SM NA. Use Winner altimeter setting; when not received, use Ainsworth altimeter setting and increase all MDA 100 feet; increase LNAV Cat B visibility 1/4 SM and Cat C visibility 1/8 SM.	MISSED APPROACH: Climb to 4000 direct ZAMSU and hold.
▽ NA ▲ NA		

ICR ASOS 126.775	MINNEAPOLIS CENTER 125.1 269.1	GCO 121.725	AUNICOM 122.8 (CTAF) 0
----------------------------	--	-----------------------	----------------------------------



ELEV 2175	TDZE 2170
-----------	-----------



CATEGORY	A	B	C	D
LNAV MDA	2820-1	650 (700-1)	2820-1 7/8 650 (700-1 7/8)	NA

NC-1, 16 APR 2026 to 14 MAY 2026

NC-1, 16 APR 2026 to 14 MAY 2026