

DENVER DEP CON
125.125 263.025

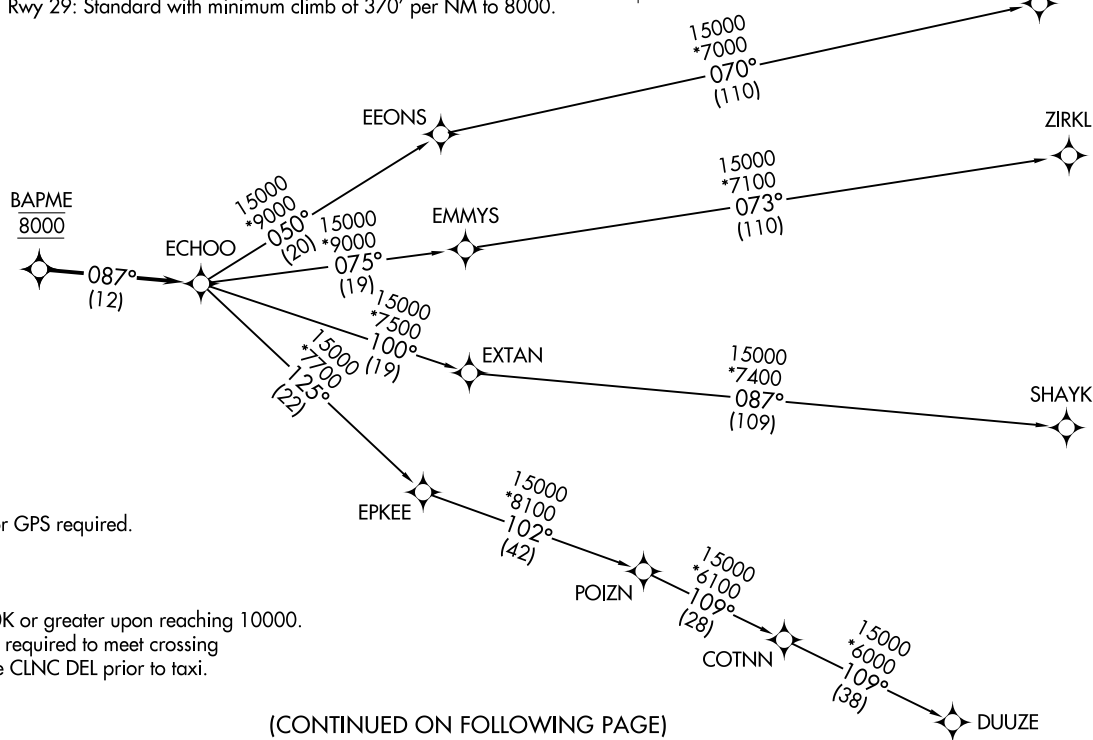


**TOP ALTITUDE:
FL230**

TAKEOFF MINIMUMS

Rwy 11: Standard.

Rwy 29: Standard with minimum climb of 370' per NM to 8000.



- NOTE: DME/DME/IRU or GPS required.
- NOTE: RNAV 1.
- NOTE: Turbojets only.
- NOTE: RADAR required.
- NOTE: Accelerate to 250K or greater upon reaching 10000.
If slower speed is required to meet crossing restrictions advise CLNC DEL prior to taxi.

NOTE: Chart not to scale.

(CONTINUED ON FOLLOWING PAGE)

ECHOO ONE DEPARTURE (RNAV)
(ECHOO1.ECHOO) 26MAR20

LONGMONT, COLORADO
VANCE BRAND (L/MO)

(ECHOO1.ECHOO) 26022
ECHOO ONE DEPARTURE (RNAV)

AL-9041 (FAA)

VANCE BRAND (L/MO)
LONGMONT, COLORADO



DEPARTURE ROUTE DESCRIPTION

TAKEOFF RUNWAY 11: Climb on a heading between 030° CW 160° as assigned by ATC. Thence. . . .

TAKEOFF RUNWAY 29: Climbing right turn on a heading between 030° CW 110° as assigned by ATC. Thence. . . .

. . . .expect RADAR vectors to cross BAPME at 8000 then on track 087° to ECHOO, then on (transition) maintain FL230 or filed lower altitude. Expect higher filed altitude ten minutes after departure.

DUUZE TRANSITION (ECHOO1.DUUZE)

SHAYK TRANSITION (ECHOO1.SHAYK)

WYNDM TRANSITION (ECHOO1.WYNDM)

ZIRKL TRANSITION (ECHOO1.ZIRKL)

SW-1, 16 APR 2026 to 14 MAY 2026

SW-1, 16 APR 2026 to 14 MAY 2026