

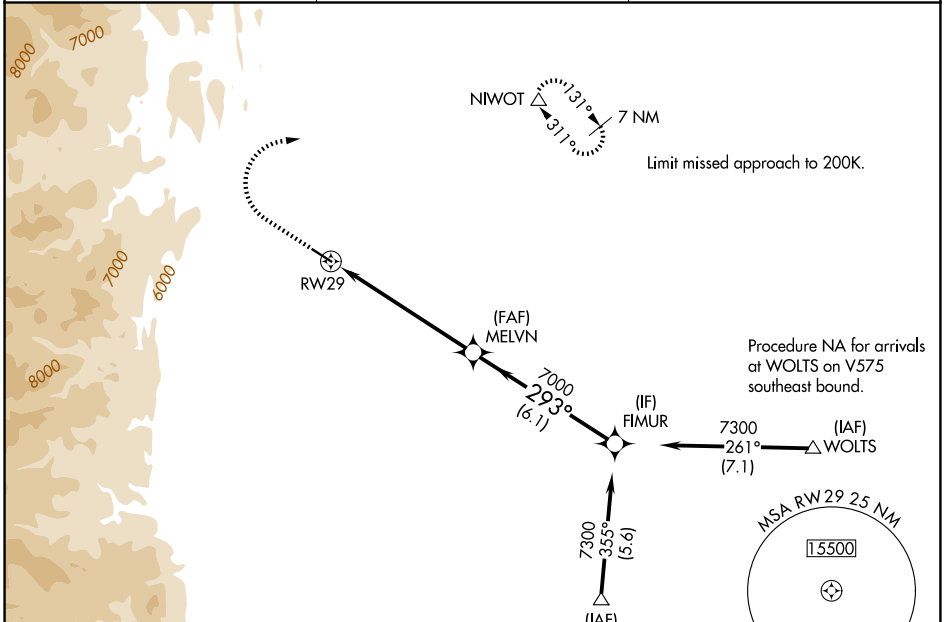
WAAS CH 86834 W29A	APP CRS 293°	Rwy Ldg TDZE Apt Elev	4799 5047 5055
--	------------------------	-----------------------------	---

RNAV (GPS) RWY 29

VANCE BRAND (LMO)

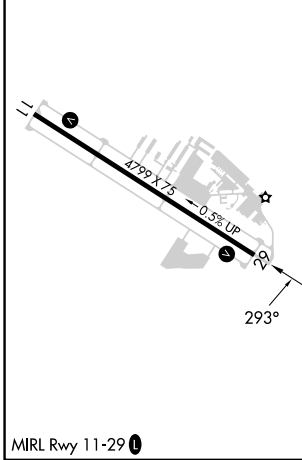
RNP APCH.	MISSED APPROACH: Climb to 5540 then climbing right turn to 7400 direct NIWOT and hold, continue climb-in-hold to 7400.
<p>▼ For uncompensated Baro-VNAV systems, procedure NA below -25°C or above 54°C.</p>	

AWOS-3 120.0	DENVER APP CON 125.125 263.025	UNICOM 122.975 (CTAF) ①
------------------------	--	-----------------------------------



ELEV 5055	TDZE 5047
-----------	-----------

Procedure NA for arrivals at FIPSS on V85 southeast bound.



5540	7400	NIWOT	FIMUR
↑	↷	△	
*LNAV only		*2.3 NM to RW29	
RW29	MELVN	FIMUR	
	7000	7300	
		293°	
		7000	
			GP 3.00° TCH 35
	2.3 NM	3.8 NM	6.1 NM

	CATEGORY A	B	C	D
LPV DA	5338-7/8 291 (300-7/8)			
LNAV/VNAV DA	5387-1 340 (400-1)			
LNAV MDA	5800-1 753 (800-1)	5800-1 1/4 753 (800-1 1/4)	5800-2 753 (800-2)	
CIRCLING	5800-1 745 (800-1)	5800-1 1/4 745 (800-1 1/4)	5860-2 1/4 805 (900-2 1/4)	6480-3 1425 (1500-3)

SW-1, 16 APR 2026 to 14 MAY 2026

SW-1, 16 APR 2026 to 14 MAY 2026