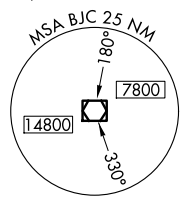
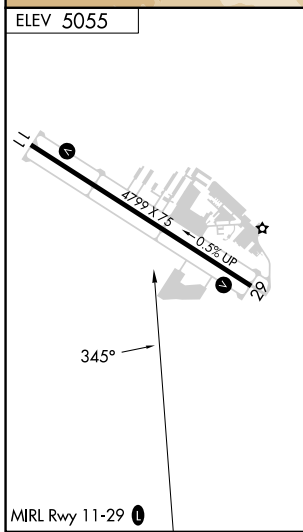
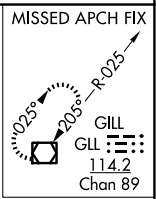
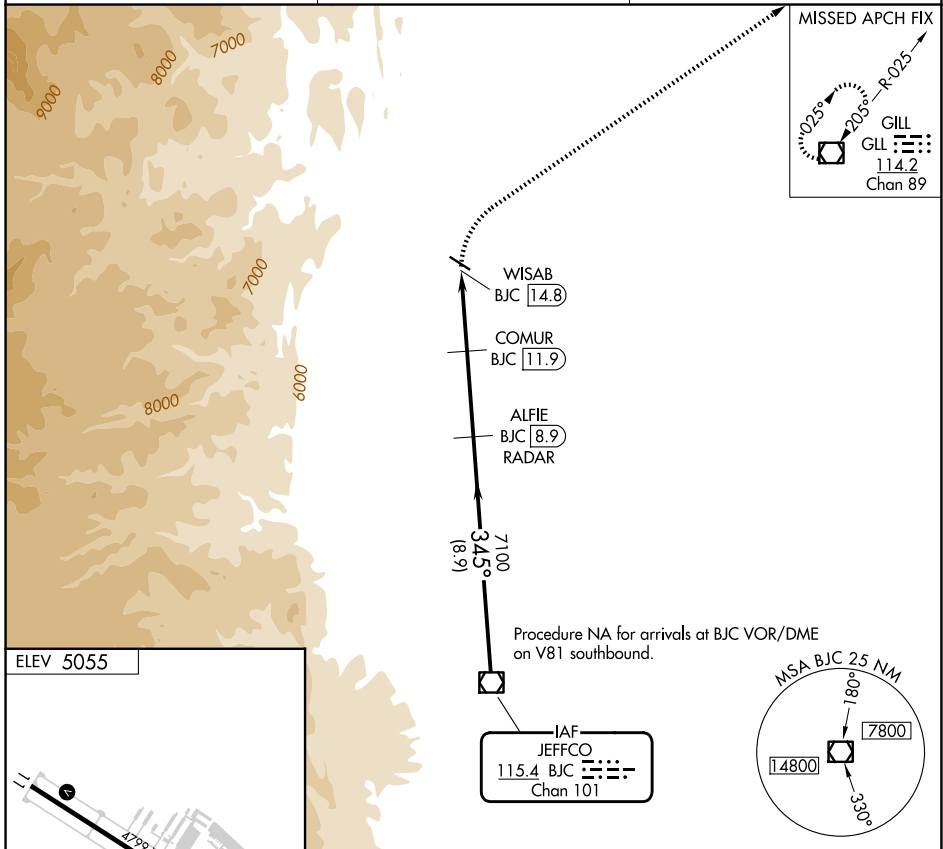


VOR/DME BJC 115.4 Chan 101	APP CRS 345°	Rwy Ldg TDZE Apt Elev N/A N/A 5055
--	------------------------	---

VOR/DME-A

VANCE BRAND (LMO)

<p>⚠ When local altimeter setting not received, use Denver Intl altimeter setting and increase all MDA 120 feet; and increase Cat C visibility ½ mile and Cat D ¼ mile.</p>	<p>MISSED APPROACH: Climbing right turn to 7000 direct GLL VOR/DME and hold.</p>	
<p>AWOS-3 120.0</p>	<p>DENVER APP CON 125.125 263.025</p>	<p>UNICOM 122.975 (CTAF) 0</p>



7000	GLL	<p>Procedure NA for arrivals at BJC VOR/DME on V81 southbound.</p>			
<p>WISAB BJC [14.8]</p>	<p>COMUR BJC [11.9]</p>	<p>ALFIE BJC [8.9] RADAR</p>	<p>BCJ VOR/DME</p>		<p>9200</p>
<p>6020</p>		<p>7100</p>		<p>345°</p>	
<p>2.9 NM</p>		<p>3.1 NM</p>		<p>8.9 NM</p>	
CATEGORY	A	B	C	D	
CIRCLING	5640-1	585 (600-1)	5880-2½ 825 (900-2½)	6500-3 1445 (1500-3)	

SW-1, 16 APR 2026 to 14 MAY 2026

SW-1, 16 APR 2026 to 14 MAY 2026