

NESS CITY, KANSAS

AL-9052 (FAA)

25163

WAAS CH <b>77944</b> <b>W17A</b>	APP CRS <b>172°</b>	Rwy Ldg TDZE Apt Elev	<b>4000</b> <b>2322</b> <b>2322</b>
--	------------------------	-----------------------------	---

# RNAV (GPS) RWY 17

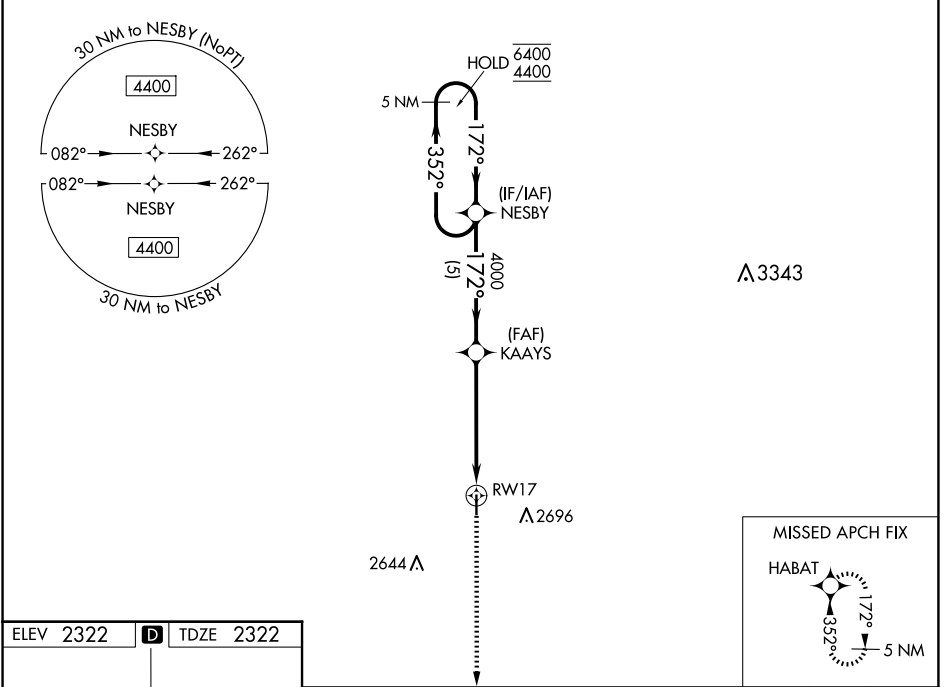
NESS CITY MUNI (48K)

RNP APCH - GPS.

**NA** Baro-VNAV NA. Use Hays Rgnl altimeter setting, when not received, use Hill City altimeter setting and increase LPV DA to 2659 feet, increase LNAV/VNAV DA to 2758 feet, and increase all MDAs 20 feet.

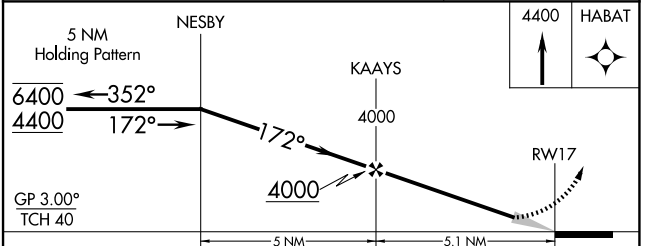
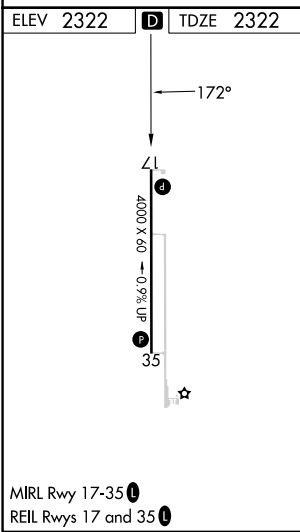
MISSED APPROACH: Climb to 4400 direct HABAT and hold.

AWOS-3PT <b>118.575</b>	HYS AWOS-3PT <b>125.525</b>	KANSAS CITY CENTER <b>124.4 322.4</b>	CTAF <b>122.9</b>
----------------------------	--------------------------------	--	----------------------



NC-2, 16 APR 2026 to 14 MAY 2026

NC-2, 16 APR 2026 to 14 MAY 2026



CATEGORY	A	B	C	D
LPV DA	2653-1	331 (400-1)		NA
LNAV/VNAV DA	2752-1¼	430 (500-1¼)		NA
LNAV MDA	3080-1 758 (800-1)	3080-1¼ 758 (800-1¼)		NA
CIRCLING	3080-1 758 (800-1)	3140-1¼ 818 (900-1¼)		NA

NESS CITY, KANSAS  
Orig 20APR23

38°28'N-99°55'W

# NESS CITY MUNI (48K)

## RNAV (GPS) RWY 17