

NESS CITY, KANSAS

AL-9052 (FAA)

25163

WAAS CH 82244 W35A	APP CRS 352°	Rwy Ldg TDZE Apt Elev	4000 2315 2322
--	------------------------	-----------------------------	---

RNAV (GPS) RWY 35

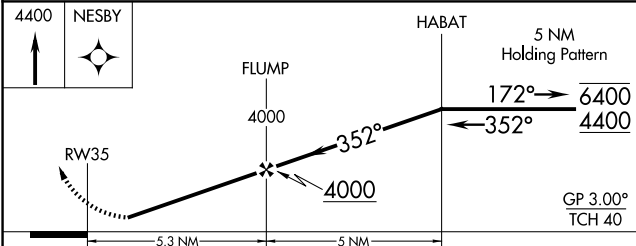
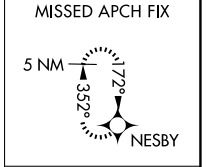
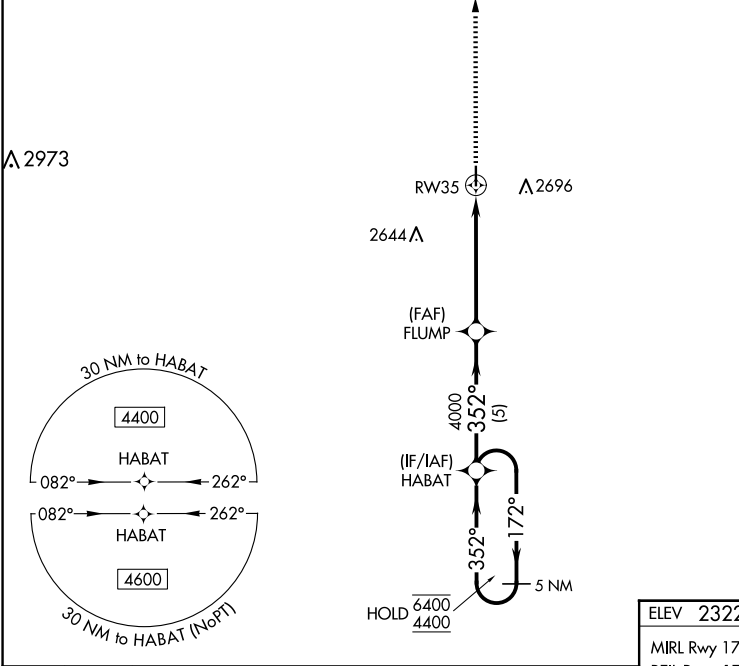
NESS CITY MUNI (48K)

RNP APCH - GPS.

▽ Rwy 35 helicopter visibility reduction below 3/4 SM NA. Baro-VNAV NA.
▲ NA Use Hays Rgnl altimeter setting, when not received, use Hill City altimeter setting and increase LPV DA to 2702 feet, increase LNAV/VNAV DA to 2714 feet, increase all MDAs 20 feet.

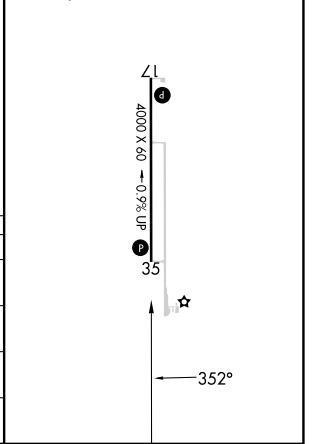
MISSED APPROACH: Climb to 4400 direct NESBY and hold.

AWOS-3PT 118.575	HYS AWOS-3PT 125.525	KANSAS CITY CENTER 124.4 322.4	CTAF 122.9
----------------------------	--------------------------------	--	----------------------



ELEV 2322	D	TDZE 2315
-----------	----------	-----------

MIRL Rwy 17-35
REIL Rwys 17 and 35



CATEGORY	A	B	C	D
LPV DA	2696-1 1/8	381 (400-1 1/8)		NA
LNAV/VNAV DA	2708-1 1/8	393 (400-1 1/8)		NA
LNAV MDA	2860-1	545 (600-1)		NA
CIRCLING	3020-1 698 (700-1)	3140-1 1/4 818 (900-1 1/4)		NA

NESS CITY, KANSAS
Orig 20APR23

38°28'N-99°55'W

RNAV (GPS) RWY 35

NESS CITY MUNI (48K)

NC-2, 16 APR 2026 to 14 MAY 2026

NC-2, 16 APR 2026 to 14 MAY 2026