

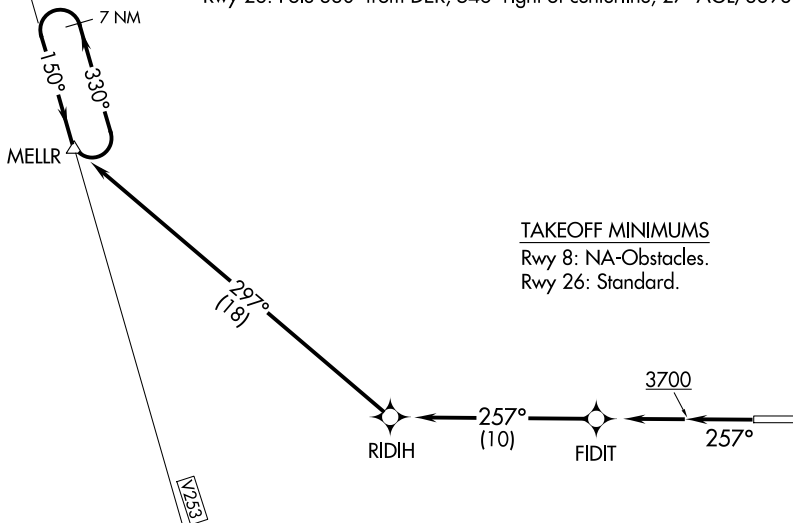
TAKEOFF OBSTACLE NOTES

Rwy 26: Pole 330' from DER, 546' right of centerline, 27' AGL/3398' MSL.

TAKEOFF MINIMUMS

Rwy 8: NA-Obstacles.

Rwy 26: Standard.



NW-1, 16 APR 2026 to 14 MAY 2026

NW-1, 16 APR 2026 to 14 MAY 2026

NOTE: GPS required.
NOTE: RNAV-1
NOTE: Chart not to scale.

DEPARTURE ROUTE DESCRIPTION

TAKEOFF RUNWAY 26: Climb on heading 257° to 3700 then direct FIDIT, then on depicted route to MELLR, maintain 7400 or assigned altitude, aircraft southeast bound on V253 continue climb in MELLR holding pattern to MEA before proceeding enroute.