

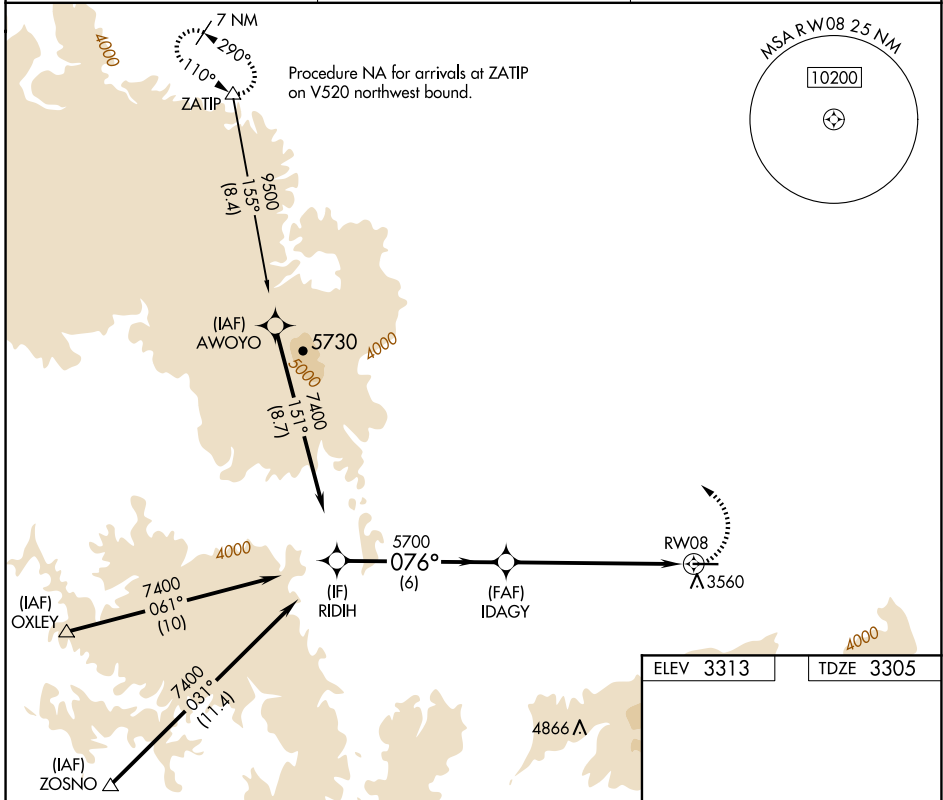
APP CRS	Rwy Ldg	5101
076°	TDZE	3305
	Apt Elev	3313

RNAV (GPS) RWY 8

IDAHO COUNTY (GIC)

RNP APCH - GPS.	MISSED APPROACH: Climbing left turn to 7300 direct ZATIP and hold.
▼ Rwy 8 helicopter visibility reduction below ¼ SM NA. ▲ Circling NA south of Rwy 8-26.	

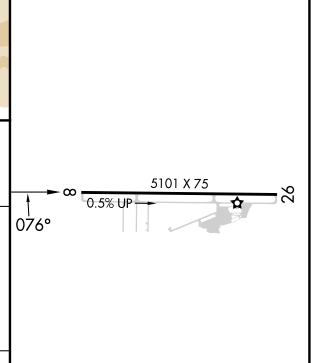
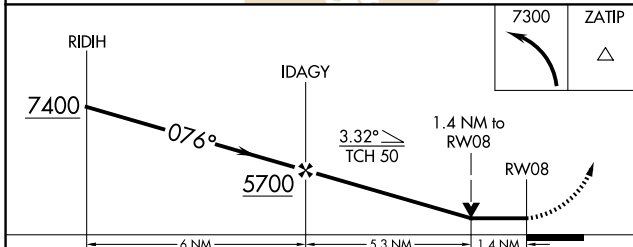
AWOS-3 118.175	SEATTLE CENTER 123.95 290.55	CTAF 122.8 0
--------------------------	--	------------------------



NW-1, 16 APR 2026 to 14 MAY 2026

NW-1, 16 APR 2026 to 14 MAY 2026

ELEV 3313	TDZE 3305
-----------	-----------



CATEGORY	A	B	C	D
LNVA MDA	3820-1	515 (600-1)	3820-1 3/8	515 (600-1 3/8)
CIRCLING	3820-1	507 (600-1)	3820-1 1/2	3880-2
			507 (600-1 1/2)	567 (600-2)

REIL Rwy 8 0
MIRL Rwy 8-26 0