

WAAS CH <b>69233</b> <b>W02A</b>	APP CRS <b>021°</b>	Rwy Idg TDZE Apt Elev	<b>5917</b> <b>4967</b> <b>4970</b>
--	------------------------	-----------------------------	---

# RNAV (GPS) RWY 2

CLAYTON MUNI AIRPARK (CAO)

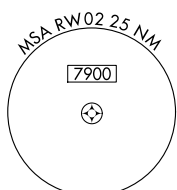
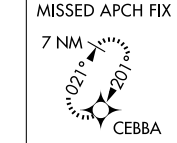
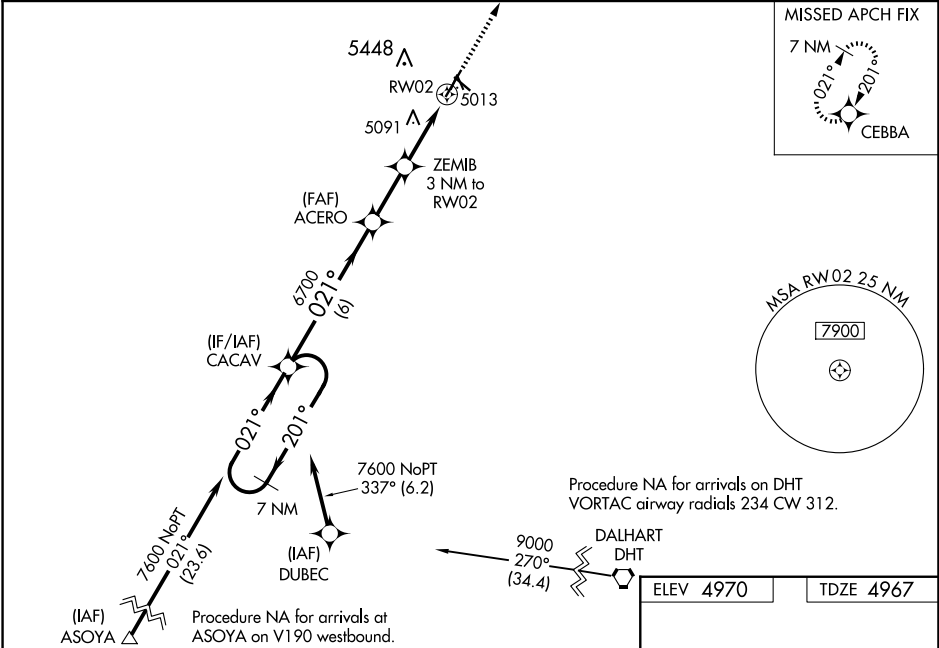
**⚠** For uncompensated Baro-VNAV systems, LNAV/VNAV NA below -1.6°C (4°F) or above 54°C (130°F). Circling NA west of Rwy 2-20. DME/DME RNP-0.3 NA. When local altimeter setting not received, use Dalhart altimeter setting and increase all DA 227 feet and all MDA 240 feet, increase LPV all Cats visibility  $\frac{3}{8}$  mile, increase LNAV/VNAV all Cats visibility  $1\frac{1}{8}$  mile, increase LNAV Cat C visibility  $\frac{5}{8}$  mile, and increase Circling Cat C visibility  $\frac{1}{2}$  mile. Baro-VNAV NA when using Dalhart altimeter setting. VDP NA with Dalhart altimeter setting.

**MISSED APPROACH:** Climb to 8000 direct CEBBA and hold, continue climb-in-hold to 8000.

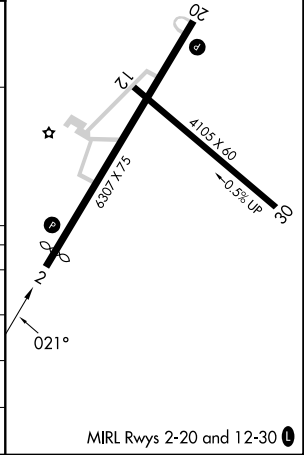
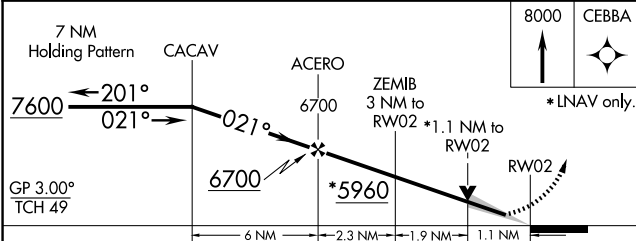
ASOS  
**120.625**

ALBUQUERQUE CENTER  
**127.85 285.475**

UNICOM  
**122.8 (CTAF) 0**



ELEV 4970	TDZE 4967
-----------	-----------



CATEGORY	A	B	C	D
LPV DA	5217- $\frac{3}{4}$		250 (300- $\frac{3}{4}$ )	NA
LNAV/VNAV DA	5367- $1\frac{3}{8}$		400 (400- $1\frac{3}{8}$ )	NA
LNAV MDA	5360-1	393 (400-1)	5360- $1\frac{1}{8}$ 393 (400- $1\frac{1}{8}$ )	NA
<b>C</b> CIRCLING	5360-1 390 (400-1)	5420-1 450 (500-1)	5420- $1\frac{1}{2}$ 450 (500- $1\frac{1}{2}$ )	NA

MIRL Rwy 2-20 and 12-30 0

SW-1, 16 APR 2026 to 14 MAY 2026

SW-1, 16 APR 2026 to 14 MAY 2026