

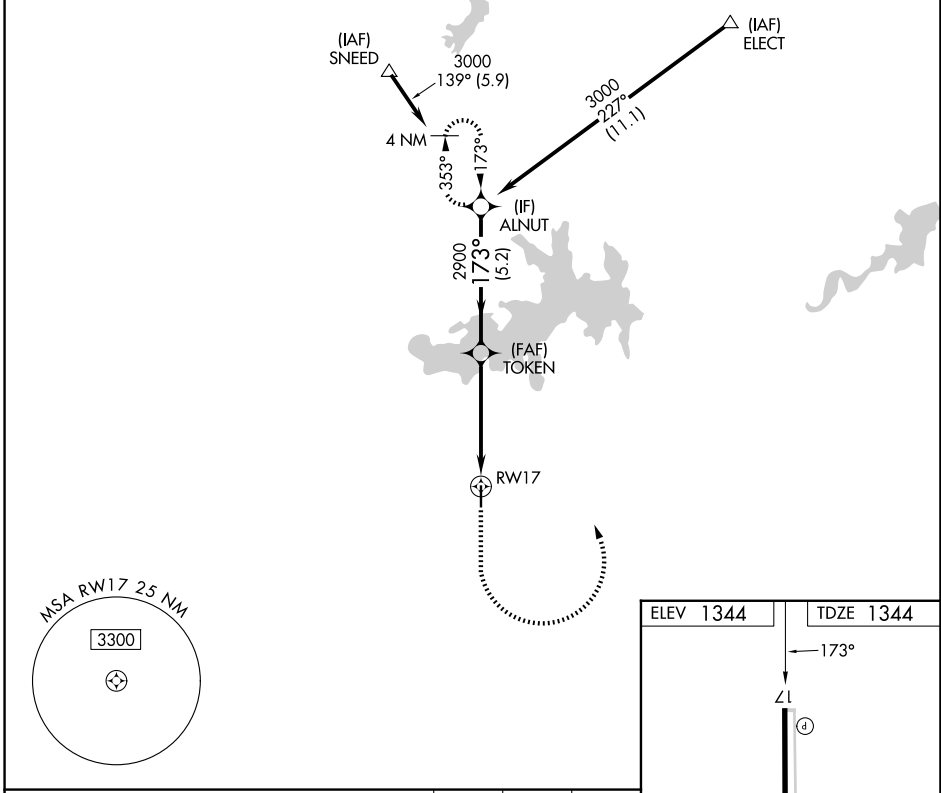
APP CRS 173°	Rwy Ldg TDZE Apt Elev	4300 1344 1344
------------------------	-----------------------------	---

RNAV (GPS) RWY 17

SEYMOUR MUNI (60F)

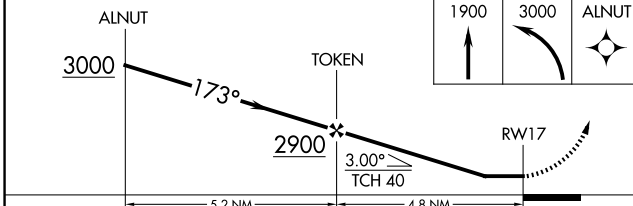
RNP APCH - GPS.	MISSED APPROACH: Climb to 1900 then climbing left turn to 3000 direct ALNUT and hold.
<p>▼ Procedure NA at night. Rwy 17 helicopter visibility reduction below 1 SM NA.</p> <p>▲ NA Obtain local altimeter setting on CTAF; when not received, use SPS altimeter setting and increase all MDAs 160 feet and LNAV visibility Cat C 3/8 SM, and Circling visibility Cat C 1/2 SM.</p>	

FORT WORTH CENTER 133.5 350.35	CTAF 122.9
--	----------------------



SC-2, 16 APR 2026 to 14 MAY 2026

SC-2, 16 APR 2026 to 14 MAY 2026



ELEV 1344	TDZE 1344
173°	
ZL	
4300 X 60	
35	
MIRL Rwy 17-35	

CATEGORY	A	B	C	D
LNAV MDA	1700-1	356 (400-1)		NA
CIRCLING	1780-1 436 (500-1)	1800-1 456 (500-1)	2020-2 676 (700-2)	NA