

WAAS CH <b>78429</b> <b>W17A</b>	APP CRS <b>169°</b>	Rwy Ldg <b>5003</b> TDZE <b>13</b> Apt Elev <b>14</b>
--	------------------------	---

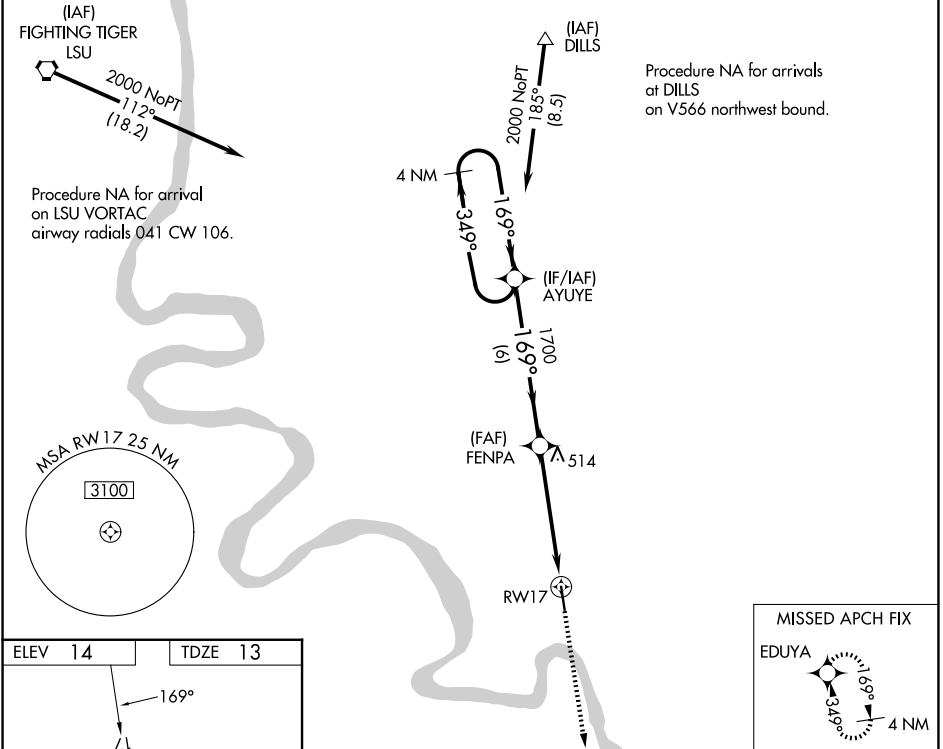
# RNAV (GPS) RWY 17

LOUISIANA RGNL (REG)

**Baro-VNAV NA.** DME/DME RNP-0.3 NA.  
Use Baton Rouge altimeter setting.  
**NA** Rwy 17 helicopter visibility reduction below 3/4 SM NA.

MISSED APPROACH: Climb to 2000 direct EDUYA and hold.

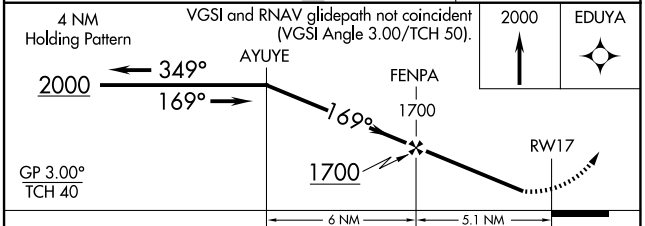
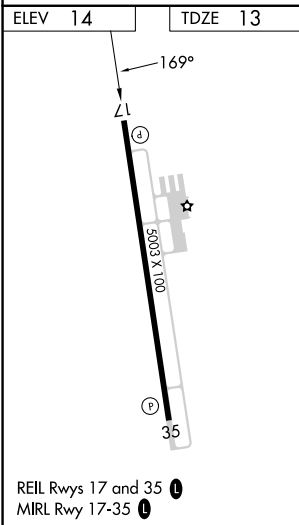
AWOS-3PT <b>121.175</b>	BTR ASOS <b>125.2</b>	BATON ROUGE APP CON★ <b>133.225 278.3</b>	GCO <b>135.075</b>	UNICOM <b>123.0 (CTAF) ①</b>
----------------------------	--------------------------	--	-----------------------	---------------------------------



Procedure NA for arrivals at DILLS on V566 northwest bound.

SC-4, 16 APR 2026 to 14 MAY 2026

SC-4, 16 APR 2026 to 14 MAY 2026



CATEGORY	A	B	C	D
LPV DA		407-1 <sup>3</sup> / <sub>8</sub>	394 (400-1 <sup>3</sup> / <sub>8</sub> )	
LNAV/VNAV DA		471-1 <sup>5</sup> / <sub>8</sub>	458 (500-1 <sup>5</sup> / <sub>8</sub> )	
LNAV MDA	540-1	527 (600-1)	540-1 <sup>1</sup> / <sub>2</sub>	527 (600-1 <sup>1</sup> / <sub>2</sub> )
CIRCLING	540-1 526 (600-1)	600-1 586 (600-1)	760-2 <sup>1</sup> / <sub>4</sub> 746 (800-2 <sup>1</sup> / <sub>4</sub> )	760-2 <sup>1</sup> / <sub>2</sub> 746 (800-2 <sup>1</sup> / <sub>2</sub> )