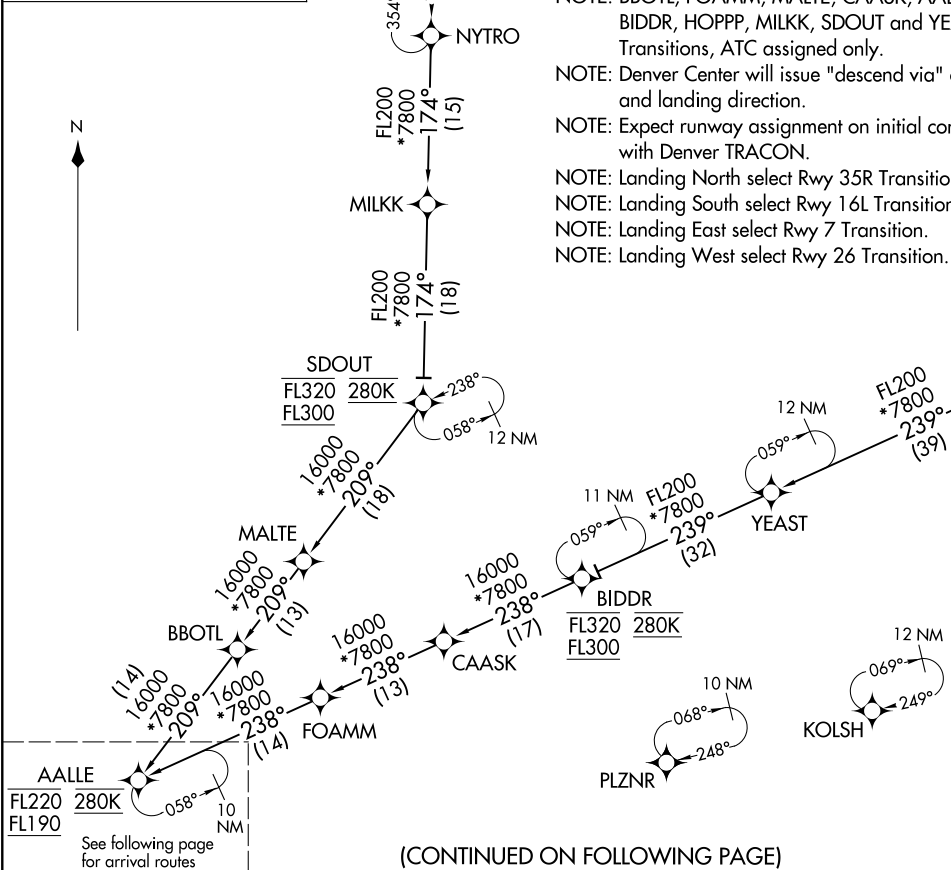


(A)AILE:A(ALL)E4) 12JUN25

A(ALL)E FOUR ARRIVAL (RNAV) Transition Routes

DENVER, COLORADO
DENVER INTL (D)EN

RNAV 1 - DME/DME/IRU or GPS.
RADAR required.



NOTE: Jet aircraft only.
 NOTE: BBOTL, FOAMM, MALTE, CAASK, A(ALL)E, BIDDR, HOPPP, MILKK, SDOUT and YEAST Transitions, ATC assigned only.
 NOTE: Denver Center will issue "descend via" clearance and landing direction.
 NOTE: Expect runway assignment on initial contact with Denver TRACON.
 NOTE: Landing North select Rwy 35R Transition.
 NOTE: Landing South select Rwy 16L Transition.
 NOTE: Landing East select Rwy 7 Transition.
 NOTE: Landing West select Rwy 26 Transition.

DENVER APP CON
 124.95 346.4
 D-ATIS ARR
 125.6 379.9
 DENVER TOWER
 128.75 273.55 (Rwy 7-25)
 132.35 239.275 (Rwys 8-26, 17L-35R)
 124.3 322.45 (Rwy 17R-35L)
 135.3 351.95 (Rwys 16L-34R, 16R-34L)

NOTE: Chart not to scale.

- BBOTL TRANSITION (BBOTL.A(ALL)E4)
- BIDDR TRANSITION (BIDDR.A(ALL)E4)
- CAASK TRANSITION (CAASK.A(ALL)E4)
- FOAMM TRANSITION (FOAMM.A(ALL)E4)
- HOPPP TRANSITION (HOPPP.A(ALL)E4)
- MALTE TRANSITION (MALTE.A(ALL)E4)
- MILKK TRANSITION (MILKK.A(ALL)E4)
- NYTRO TRANSITION (NYTRO.A(ALL)E4)
- PORDR TRANSITION (PORDR.A(ALL)E4)
- SDOUT TRANSITION (SDOUT.A(ALL)E4)
- YEAST TRANSITION (YEAST.A(ALL)E4)

(CONTINUED ON FOLLOWING PAGE)

(A)AILE:A(ALL)E4) 25163

AL-9077 (FAA)
A(ALL)E FOUR ARRIVAL (RNAV) Transition Routes

DENVER INTL (D)EN
DENVER, COLORADO

(AALLE;AALLE4) 12JUN25

AALLE FOUR ARRIVAL (RNAV) Arrival Routes

DENVER, COLORADO
DENVER INTL (DEN)

DENVER APP CON
124.95 346.4
D-ATIS ARR
125.6 379.9
DENVER TOWER
128.75 273.55 (Rwy 7-25)
132.35 239.275 (Rwys 8-26, 17L-35R)
124.3 322.45 (Rwy 17R-35L)
135.3 351.95 (Rwys 16L-34R, 16R-34L)

RNAV 1 - DME/DME/IRU or GPS.
RADAR required.

AALLE
FL220 280K
FL190

KIPPR
12000 210K
Ldg Rwys 16L/R, 17L/R

HIGUN
14000 210K

HEDDD
FL190 250K
16000

CRUNK
14000
Ldg Rwys 25, 26

DEELO
17000
15000

JEPHF
15000 250K
13000

FULLA
15000 250K
13000

FFFAT
1731
10 NM

DOGGG
11000 210K
Ldg Rwys 35L/R

HAITR
11000 210K
Ldg Rwys 7, 8

HIMOM
11000 210K
Ldg Rwys 34L/R

- NOTE: Jet aircraft only.
NOTE: BBOTL, FOAMM, MALTE, CAASK, AALLE, BIDDR, HOPPP, MILKK, SDOUT and YEAST Transitions, ATC assigned only.
NOTE: Denver Center will issue "descend via" clearance and landing direction.
NOTE: Expect runway assignment on initial contact with Denver TRACON.
NOTE: Landing North select Rwy 35R Transition.
NOTE: Landing South select Rwy 16L Transition.
NOTE: Landing East select Rwy 7 Transition.
NOTE: Landing West select Rwy 26 Transition.

(CONTINUED ON FOLLOWING PAGE)

NOTE: Chart not to scale.

(AALLE;AALLE4) 25163

AALLE FOUR ARRIVAL (RNAV) Arrival Routes

AL-9077 (FAA)

DENVER INTL (DEN)
DENVER, COLORADO

ARRIVAL ROUTE DESCRIPTION

From AALLE on track 231° to cross HEDDD between 16000 and FL190 and at 250K.

LANDING RUNWAYS 7, 8: From HEDDD on track 211° to cross DEELO between 15000 and 17000, then on track 222° to cross JEPHF between 13000 and 15000 and at 250K, then on track 236° to HAZLT, then on track 263° to cross HAITR at 11000 and at 210K, then on track 263°. Expect RADAR vectors to final approach course.

LANDING RUNWAYS 16L/R, 17L/R: From HEDDD on track 269° to cross HIGUN at 14000 and at 210K, then on track 265° to cross KIPPR at 12000 and at 210K. Expect ILS or LOC RWY 16L, RWY 16R, RWY 17L, RWY 17R approach.

LANDING RUNWAYS 25, 26: From HEDDD on track 217° to cross CRUNK at 14000, then on track 217°. Expect RADAR vectors to final approach course.

LANDING RUNWAYS 34L/R: From HEDDD on track 211° to cross DEELO between 15000 and 17000, then on track 222° to cross JEPHF between 13000 and 15000 and at 250K, then on track 236° to HAZLT, then on track 236° to GRILA, then on track 173° to cross HIMOM at 11000 and at 210K, then on track 173°. Expect RADAR vectors to final approach course.

LANDING RUNWAYS 35L/R: From HEDDD on track 211° to cross DEELO between 15000 and 17000, then on track 211° to cross FULLA between 13000 and 15000 and at 250K, then on track 211° to FFFAT, then on track 173° to cross DOGGG at 11000 and at 210K, then on track 173°. Expect RADAR vectors to final approach course.

LOST COMMUNICATIONS: In the event of lost communications prior to runway transition assignment, when DEN is landing south, execute the ILS RWY 16L, when DEN is landing north, execute the ILS RWY 35R.

SW-1, 16 APR 2026 to 14 MAY 2026

SW-1, 16 APR 2026 to 14 MAY 2026