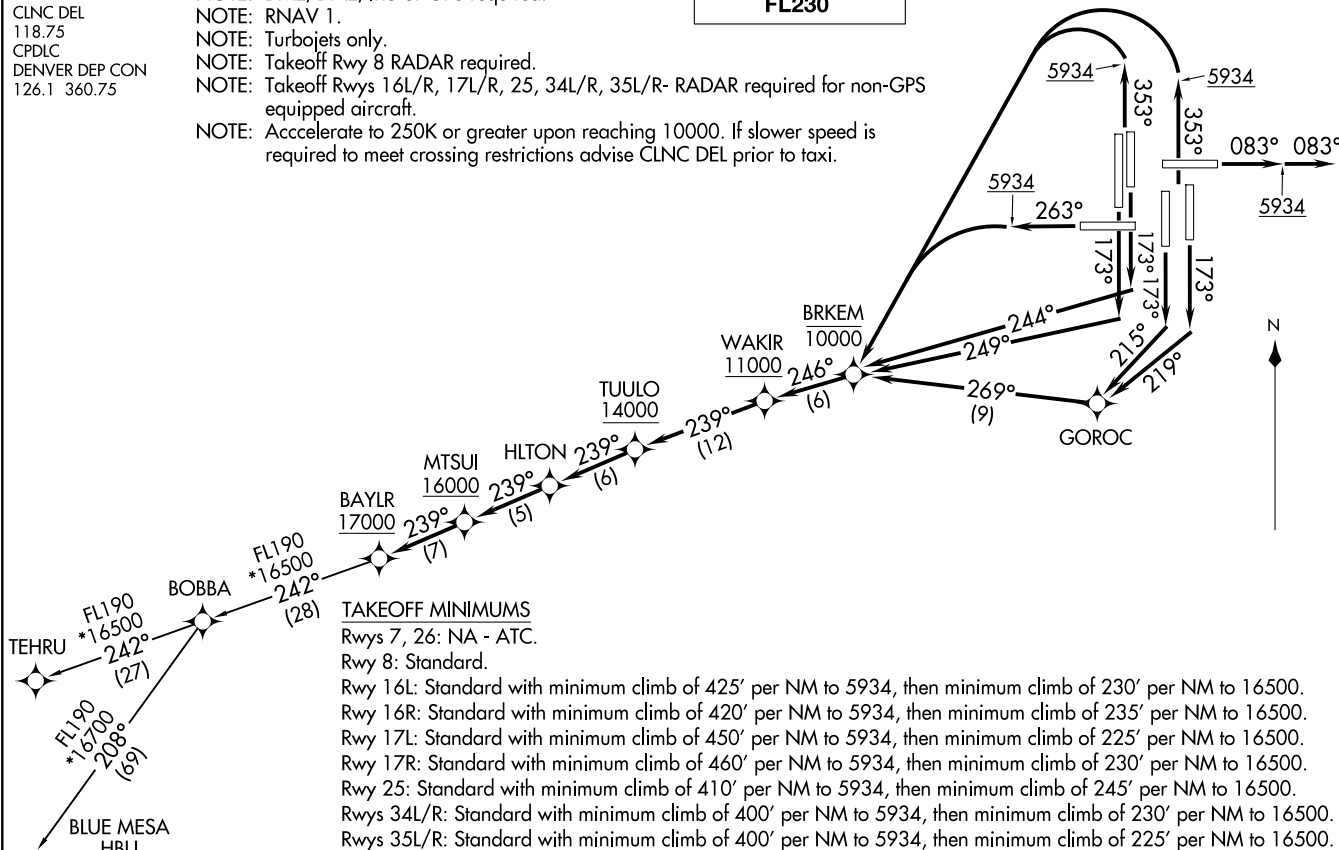


BAYLR SIX DEPARTURE (RNAV)
 (BAYLR6, BAYLR) 26MAR20

D-ATIS DEP
 134.025
 CLNC DEL
 118.75
 CPDLC
 DENVER DEP CON
 126.1 360.75

NOTE: DME/DME/IRU or GPS required.
 NOTE: RNAV 1.
 NOTE: Turbojets only.
 NOTE: Takeoff Rwy 8 RADAR required.
 NOTE: Takeoff Rwys 16L/R, 17L/R, 25, 34L/R, 35L/R- RADAR required for non-GPS equipped aircraft.
 NOTE: Accelerate to 250K or greater upon reaching 10000. If slower speed is required to meet crossing restrictions advise CLNC DEL prior to taxi.

**TOP ALTITUDE:
 FL230**



TAKEOFF MINIMUMS
 Rwys 7, 26: NA - ATC.
 Rwy 8: Standard.
 Rwy 16L: Standard with minimum climb of 425' per NM to 5934, then minimum climb of 230' per NM to 16500.
 Rwy 16R: Standard with minimum climb of 420' per NM to 5934, then minimum climb of 235' per NM to 16500.
 Rwy 17L: Standard with minimum climb of 450' per NM to 5934, then minimum climb of 225' per NM to 16500.
 Rwy 17R: Standard with minimum climb of 460' per NM to 5934, then minimum climb of 230' per NM to 16500.
 Rwy 25: Standard with minimum climb of 410' per NM to 5934, then minimum climb of 245' per NM to 16500.
 Rwys 34L/R: Standard with minimum climb of 400' per NM to 5934, then minimum climb of 230' per NM to 16500.
 Rwys 35L/R: Standard with minimum climb of 400' per NM to 5934, then minimum climb of 225' per NM to 16500.

(NARRATIVE ON FOLLOWING PAGE)

NOTE: Chart not to scale.

DENVER, COLORADO
 DENVER INTL (DEN)

(BAYLR6, BAYLR) 20086
BAYLR SIX DEPARTURE (RNAV)

AL-9077 (FAA)

DENVER INTL (DEN)
 DENVER, COLORADO



DEPARTURE ROUTE DESCRIPTION
SEE ADDITIONAL REQUIREMENTS ON AAUP

TAKEOFF RUNWAY 8: Climb on heading 083° to 5934, then on heading 083° or as assigned by ATC, expect vectors to cross WAKIR at or above 11000, thence . . .

TAKEOFF RUNWAY 16L: Climb on heading 173° to intercept course 244° to cross BRKEM at or below 10000, then on track 246° to cross WAKIR at or above 11000, thence . . .

TAKEOFF RUNWAY 16R: Climb on heading 173° to intercept course 249° to cross BRKEM at or below 10000, then on track 246° to cross WAKIR at or above 11000, thence . . .

TAKEOFF RUNWAY 17L: Climb on heading 173° to intercept course 219° to GOROC, then on track 269° to cross BRKEM at or below 10000, then on track 246° to cross WAKIR at or above 11000, thence . . .

TAKEOFF RUNWAY 17R: Climb on heading 173° to intercept course 215° to GOROC, then on track 269° to cross BRKEM at or below 10000, then on track 246° to cross WAKIR at or above 11000, thence . . .

TAKEOFF RUNWAY 25: Climb on heading 263° to 5934, then climbing left turn direct to cross BRKEM at or below 10000, then on track 246° to cross WAKIR at or above 11000, thence . . .

TAKEOFF RUNWAYS 34L/R, 35L/R: Climb on heading 353° to 5934, then climbing left turn direct to cross BRKEM at or below 10000, then on track 246° to cross WAKIR at or above 11000, thence . . .

. . . on track 239° to cross TUULO at or above 14000, then on track 239° to HLTON, then on track 239° to cross MTSUI at or above 16000, then on track 239° to cross BAYLR at or above 17000. Then on (transition) maintain FL230 or filed lower altitude. Expect higher filed altitude ten minutes after departure.

BLUE MESA TRANSITION (BAYLR6.HBU)

TEHRU TRANSITION (BAYLR6.TEHRU)

SW-1, 16 APR 2026 to 14 MAY 2026

SW-1, 16 APR 2026 to 14 MAY 2026