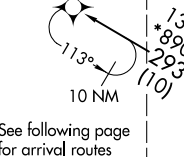


RNAV 1 - DME/DME/IRU or GPS.
RADAR required.

DENVER APP CON
126.55 269.525
D-ATIS ARR
125.6 379.9
DENVER TOWER
128.75 273.55 (Rwy 7-25)
132.35 239.275 (Rwys 8-26, 17L-35R)
124.3 322.45 (Rwy 17R-35L)
135.3 351.95 (Rwys 16L-34R, 16R-34L)



CLASH
FL220 280K
FL190



See following page
for arrival routes

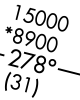
RRUSL



LYNKN

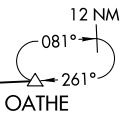
(15)

ININN
FL300



THINN

FL190
*8900
261°
(22)



OATHE

IDOLL



WAIYN
FL300



DYLLN



KIISS

- NOTE: Jet aircraft only.
- NOTE: Denver Center will issue "descend via" clearance and landing direction.
- NOTE: Expect runway assignment on initial contact with Denver TRACON.
- NOTE: Landing North select Rwy 35R Transition.
- NOTE: Landing South select Rwy 17R Transition.
- NOTE: Landing East select Rwy 7 Transition.
- NOTE: Landing West select Rwy 26 Transition.

NOTE: Chart not to scale.

KIISS TRANSITION (KIISS.CLASH5)
OATHE TRANSITION (OATHE.CLASH5)

(CONTINUED ON FOLLOWING PAGE)

CLASH FIVE ARRIVAL (RNAV) Transition Routes
(CLASH.CLASH5) 12JUN25
DENVER, COLORADO
DENVER INTL (DEN)

(CLASH.CLASH5) 25163
AL-9077 (FAA)
DENVER INTL (DEN)
DENVER, COLORADO

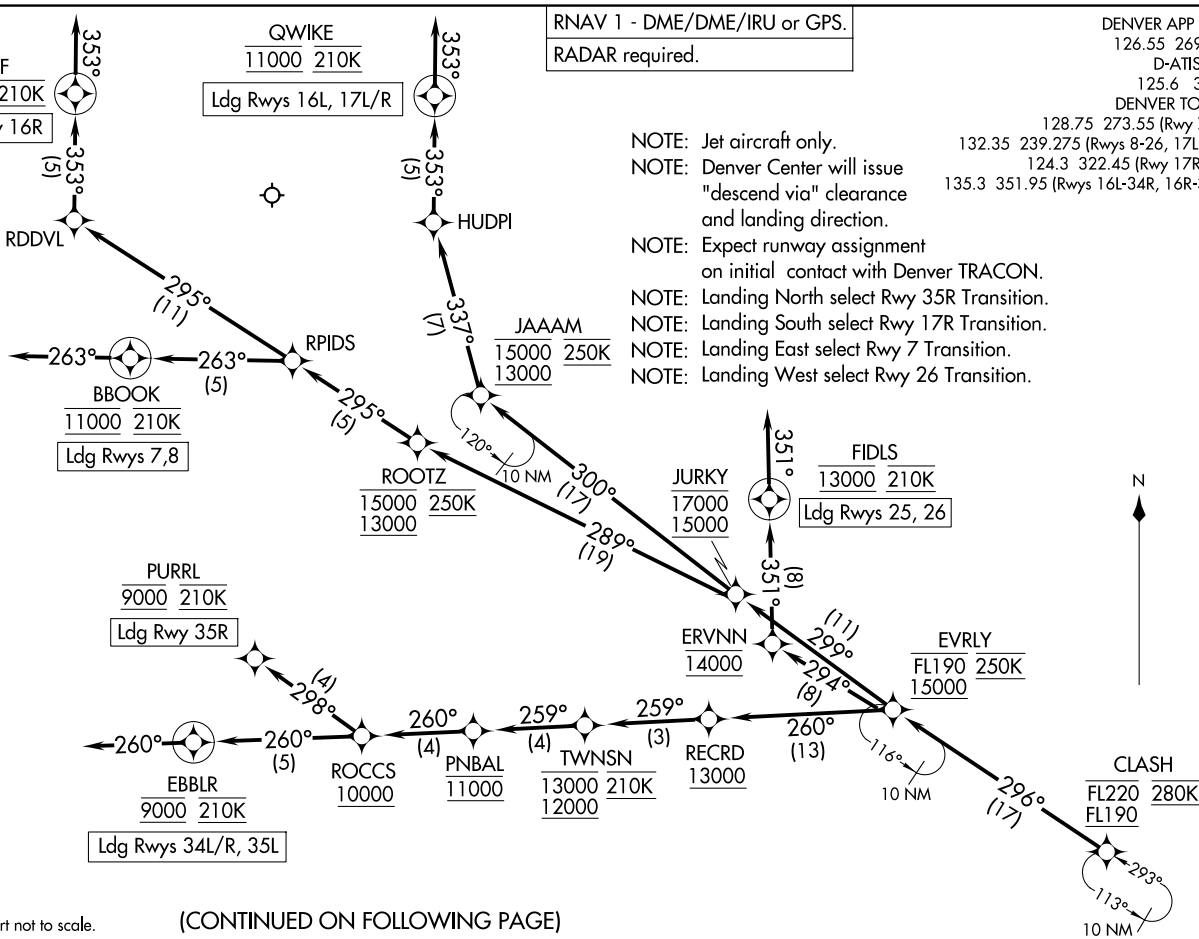
RNAV 1 - DME/DME/IRU or GPS.
RADAR required.

DENVER APP CON
126.55 269.525
D-ATIS ARR
125.6 379.9
DENVER TOWER
128.75 273.55 (Rwy 7-25)
132.35 239.275 (Rwys 8-26, 17L-35R)
124.3 322.45 (Rwy 17R-35L)
135.3 351.95 (Rwys 16L-34R, 16R-34L)

- NOTE: Jet aircraft only.
- NOTE: Denver Center will issue "descend via" clearance and landing direction.
- NOTE: Expect runway assignment on initial contact with Denver TRACON.
- NOTE: Landing North select Rwy 35R Transition.
- NOTE: Landing South select Rwy 17R Transition.
- NOTE: Landing East select Rwy 7 Transition.
- NOTE: Landing West select Rwy 26 Transition.

(CLASH.CLASH5) 251.63
AL-9077 (FAA)
Arrival Routes

DENVER INTL (DEN)
DENVER, COLORADO



NOTE: Chart not to scale.

(CONTINUED ON FOLLOWING PAGE)

CLASH FIVE ARRIVAL (RNAV) Arrival Routes
(CLASH.CLASH5) 12 JUN 25

DENVER, COLORADO
DENVER INTL (DEN)

ARRIVAL ROUTE DESCRIPTION

From CLASH on track 296° to cross EVRLY between 15000 and FL190 and at 250K.

LANDING RUNWAYS 7, 8: From EVRLY on track 299° to cross JURKY between 15000 and 17000, then on track 289° to cross ROOTZ between 13000 and 15000 and at 250K, then on track 295° to RPIDS, then on track 263° to cross BBOOK at 11000 and at 210K, then on track 263°. Expect RADAR vectors to final approach course.

LANDING RUNWAYS 16L, 17L/R: From EVRLY on track 299° to cross JURKY between 15000 and 17000, then on track 300° to cross JAAAM between 13000 and 15000 and at 250K, then on track 337° to HUDPI, then on track 353° to cross QWIKE at 11000 and at 210K, then on track 353°. Expect RADAR vectors to final approach course.

LANDING RUNWAY 16R: From EVRLY on track 299° to cross JURKY between 15000 and 17000, then on track 289° to cross ROOTZ between 13000 and 15000 and at 250K, then on track 295° to RPIDS, then on track 295° to RDDVL, then on track 353° to cross CLFFF at 11000 and at 210K, then on track 353°. Expect RADAR vectors to final approach course.

LANDING RUNWAYS 25, 26: From EVRLY on track 294° to cross ERVNN at 14000, then on track 351° to cross FIDLS at 13000 and at 210K, then on track 351°. Expect RADAR vectors to final approach course.

LANDING RUNWAYS 34L/R, 35L: From EVRLY on track 260° to cross RECRD at or above 13000, then on track 259° to cross TWNSN between 12000 and 13000 and at 210K, then on track 259° to cross PNBAL at 11000, then on track 260° to cross ROCCS at or above 10000, then on track 260° to cross EBBLR at 9000 and at 210K, then on track 260°. Expect RADAR vectors to final approach course.

LANDING RUNWAY 35R: From EVRLY on track 260° to cross RECRD at or above 13000, then on track 259° to cross TWNSN between 12000 and 13000 and at 210K, then on track 259° to cross PNBAL at 11000, then on track 260° to cross ROCCS at or above 10000, then on track 298° to cross PURRL at 9000 and at 210K. Expect ILS or LOC RWY 35R approach.

LOST COMMUNICATIONS: In the event of lost communications prior to runway transition assignment, when DEN is landing south, execute the ILS RWY 17R, when DEN is landing north, execute the ILS RWY 35R.

SW-1, 16 APR 2026 to 14 MAY 2026

SW-1, 16 APR 2026 to 14 MAY 2026