

EMMYS EIGHT DEPARTURE (RNAV)  
(EMMYS8.ZIRKL) 17JUN21

DENVER, COLORADO  
DENVER INTL (DEN)

NOTE: DME/DME/IRU or GPS required.

NOTE: RNAV 1.

NOTE: Turbojets only.

NOTE: Takeoff Rwy 16L/R, 17L/R, 34L/R, 35L/R - RADAR required for non-GPS equipped aircraft.

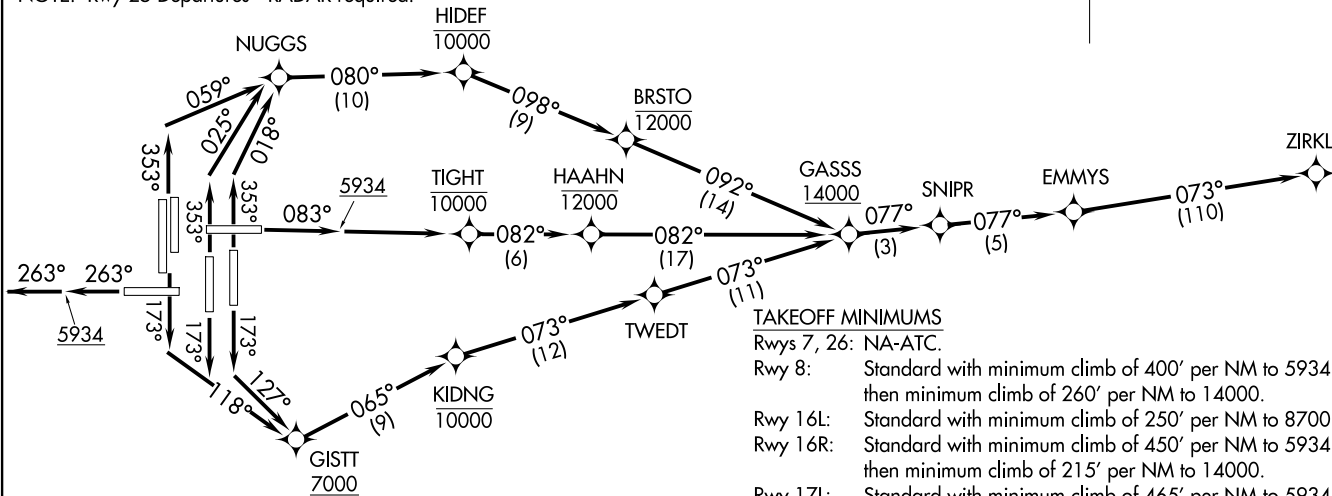
NOTE: Accelerate to 250K or greater upon reaching 10000. If slower speed is required to meet crossing restrictions advise CLNC DEL prior to taxi.

NOTE: Rwy 25 Departures - RADAR required.

**TOP ALTITUDE:  
FL230**



D-ATIS DEP 134.025  
CLNC DEL 118.75  
CPDLC  
DENVER DEP CON 128.25 371.95



**TAKEOFF MINIMUMS**

Rwys 7, 26: NA-ATC.

Rwy 8: Standard with minimum climb of 400' per NM to 5934 then minimum climb of 260' per NM to 14000.

Rwy 16L: Standard with minimum climb of 250' per NM to 8700.

Rwy 16R: Standard with minimum climb of 450' per NM to 5934 then minimum climb of 215' per NM to 14000.

Rwy 17L: Standard with minimum climb of 465' per NM to 5934 then minimum climb of 280' per NM to 9300.

Rwy 17R: Standard with minimum climb of 465' per NM to 5934 then minimum climb of 235' per NM to 14000.

Rwy 25: Standard with minimum climb of 400' per NM to 5934.

Rwys 34L/R: Standard with minimum climb of 500' per NM to 5934 then minimum climb of 220' per NM to 14000.

Rwy 35L: Standard with minimum climb of 320' per NM to 5934 then minimum climb of 220' per NM to 14000.

Rwy 35R: Standard with minimum climb of 285' per NM to 9000.

(NARRATIVE ON FOLLOWING PAGE)

NOTE: Chart not to scale.

(EMMYS8.ZIRKL) 21168  
EMMYS EIGHT DEPARTURE (RNAV)

AL-9077 (FAA)

DENVER INTL (DEN)  
DENVER, COLORADO



DEPARTURE ROUTE DESCRIPTION

TAKEOFF RUNWAY 8: Climb on heading 083° to 5934, then direct to cross TIGHT at or below 10000, then on track 082° to cross HAAHN at or below 12000, then on track 082° to cross GASSS at or above 14000, then on track 077° to SNIPR, then on track 077° to EMMYS, thence. . . .

TAKEOFF RUNWAYS 16L/R, 17R: Climb on heading 173° to intercept course 118° to cross GISTT at or above 7000, then on track 065° to cross KIDNG at or below 10000, then on track 073° to TWEDT, then on track 073° to cross GASSS at or above 14000, then on track 077° to SNIPR, then on track 077° to EMMYS, thence. . . .

TAKEOFF RUNWAY 17L: Climb on heading 173° to intercept course 127° to cross GISTT at or above 7000, then on track 065° to cross KIDNG at or below 10000, then on track 073° to TWEDT, then on track 073° to cross GASSS at or above 14000, then on track 077° to SNIPR, then on track 077° to EMMYS, thence. . . .

TAKEOFF RUNWAY 25: Climb on heading 263° to 5934, then continue climb on heading 263° or as assigned by ATC for RADAR vectors to EMMYS, thence. . . .

TAKEOFF RUNWAYS 34L/R: Climb on heading 353° to intercept course 059° to NUGGS then on track 080° to cross HIDEF at/below 10000, then on track 098° to cross BRSTO at/or below 12000, then on track 092° to cross GASSS at/above 14000, then on track 077° to SNIPR, then on track 077° to EMMYS, thence. . . .

TAKEOFF RUNWAY 35L: Climb on heading 353° to intercept course 025° to NUGGS, then on track 080° to cross HIDEF at or below 10000, then on track 098° to cross BRSTO at or below 12000, then on track 092° to cross GASSS at or above 14000, then on track 077° to SNIPR, then on track to 077° to EMMYS, thence. . . .

TAKEOFF RUNWAY 35R: Climb on heading 353° to intercept course 018° to NUGGS, then on track 080° to cross HIDEF at or below 10000, then on track 098° to cross BRSTO at or below 12000, then on track 092° to cross GASSS at or above 14000, then on track 077° to SNIPR, then on track to 077° to EMMYS, thence. . . .

. . . .on depicted route to ZIRKL. Maintain FL230 or filed lower altitude, expect higher filed altitude 10 minutes after departure.

SW-1, 16 APR 2026 to 14 MAY 2026

SW-1, 16 APR 2026 to 14 MAY 2026