

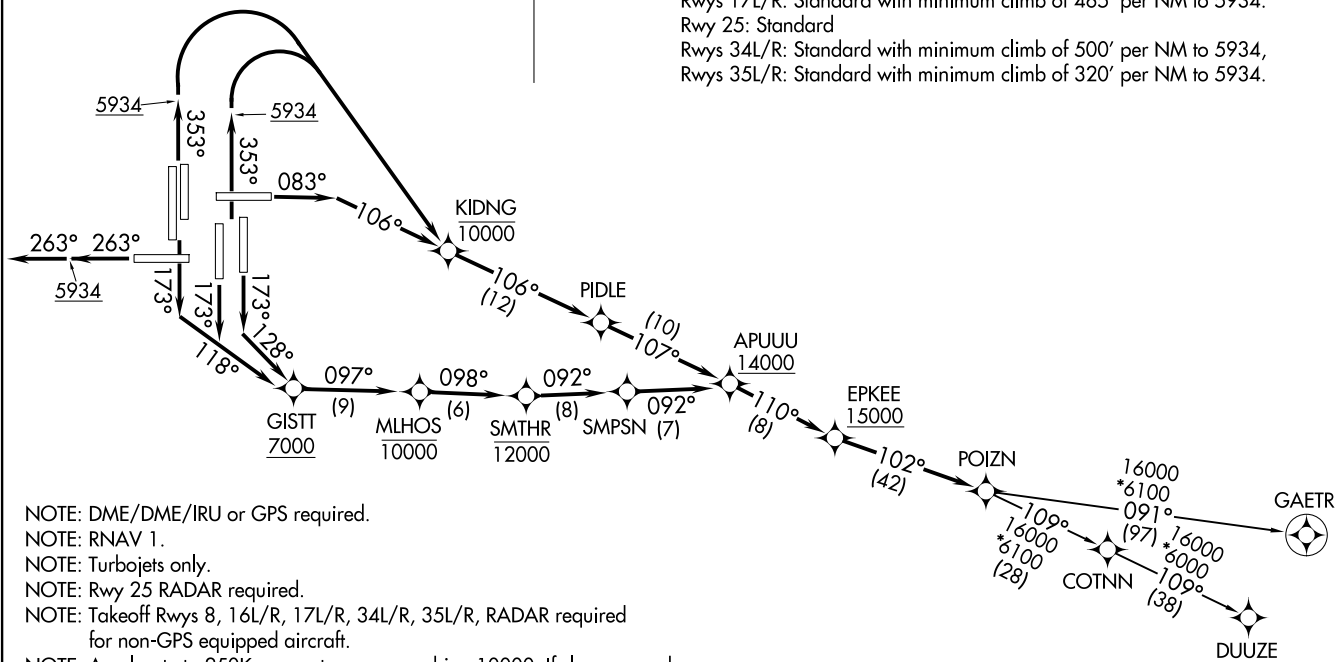
**TOP ALTITUDE:
FL230**

TAKEOFF MINIMUMS

- Rwys 7, 26: NA-ATC.
- Rwys 8, 16L: Standard with minimum climb of 400' per NM to 5934.
- Rwy 16R: Standard with minimum climb of 450' per NM to 5934.
- Rwys 17L/R: Standard with minimum climb of 465' per NM to 5934.
- Rwy 25: Standard
- Rwys 34L/R: Standard with minimum climb of 500' per NM to 5934,
- Rwys 35L/R: Standard with minimum climb of 320' per NM to 5934.

EPKKEE SEVEN DEPARTURE (RNAV)
 (EPKKEE7.EPKKEE) 26MARCHO
 DENVER, COLORADO
 DENVER INTL (DEN)

D-ATIS DEP
134.025
CLNC DEL
118.75
CPDLC
DENVER DEP CON
128.25 371.95



- NOTE: DME/DME/IRU or GPS required.
- NOTE: RNAV 1.
- NOTE: Turbojets only.
- NOTE: Rwy 25 RADAR required.
- NOTE: Takeoff Rwys 8, 16L/R, 17L/R, 34L/R, 35L/R, RADAR required for non-GPS equipped aircraft.
- NOTE: Accelerate to 250K or greater upon reaching 10000. If slower speed is required to meet crossing restrictions advise CLNC DEL prior to taxi.

NOTE: Chart not to scale.

(NARRATIVE ON FOLLOWING PAGE)

(EPKKEE7.EPKKEE) 20142
 EPKKEE SEVEN DEPARTURE (RNAV)
 AL-9077 (FAA)
 DENVER INTL (DEN)
 DENVER, COLORADO



DEPARTURE ROUTE DESCRIPTION
SEE ADDITIONAL REQUIREMENTS ON AAUP

TAKEOFF RUNWAY 8: Climb on heading 083° to intercept course 106° to cross KIDNG at or below 10000, then on track 106° to PIDLE, then on track 107° to cross APUUU at or above 14000, then on track 110° to cross EPKEE at or above 15000, thence. . . .

TAKEOFF RUNWAYS 16L, 16R, 17R: Climb on heading 173° to intercept course 118° to cross GISTT at or above 7000, then on track 097° to cross MLHOS at or below 10000, then on track 098° to cross SMTHR at or below 12000, then on track 092° to SMPSN, then on track 092° to cross APUUU at or above 14000, then on track 110° to cross EPKEE at or above 15000, thence. . . .

TAKEOFF RUNWAY 17L: Climb on heading 173° to intercept course 128° to cross GISTT at or above 7000, then on track 097° to cross MLHOS at or below 10000, then on track 098° to cross SMTHR at or below 12000, then on track 092° to SMPSN, then on track 092° to cross APUUU at or above 14000, then on track 110° to cross EPKEE at or above 15000, thence. . . .

TAKEOFF RUNWAY 25: Climb on heading 263° to 5934, then on heading 263° or as assigned by ATC, expect vectors to cross EPKEE at or above 15000, thence. . . .

TAKEOFF RUNWAYS 34L/R, 35L/R: Climb on heading 353° to 5934, then climbing right turn direct to cross KIDNG at or below 10000, then on track 106° to PIDLE, then on track 107° to cross APUUU at or above 14000, then on track 110° to cross EPKEE at or above 15000, thence. . . .

. . . . on track 102° to POIZN. Then on (transition) maintain FL230 or filed lower altitude. Expect higher filed altitude ten minutes after departure.

DUUZE TRANSITION (EPKEE7.DUUZE)

GAETR TRANSITION (EPKEE7.GAETR)

SW-1, 16 APR 2026 to 14 MAY 2026

SW-1, 16 APR 2026 to 14 MAY 2026