

LOC/DME I-DXU 111.9 Chan 56	APP CRS 353°	Rwy Ldg TDZE Apt Elev 16000 5327 5434
---	------------------------	---

ILS RWY 34L (CAT II & III)

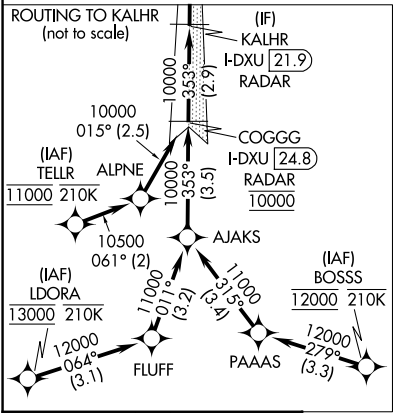
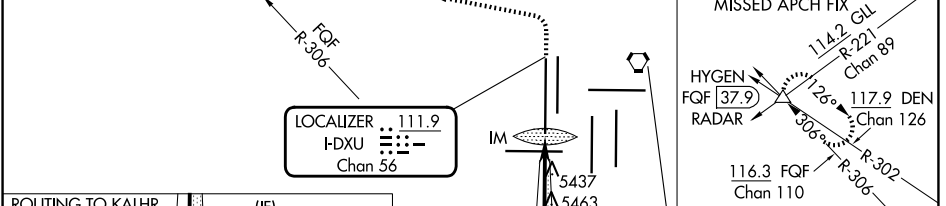
DENVER INTL (DEN)

RNP APCH - GPS. From LDORA, BOSSS, TELLR.
DME or RADAR required.

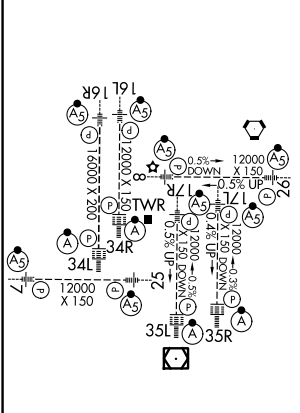
ALSF-2

MISSED APPROACH: Climb to 5800 then climbing left turn to 11000 on heading 270° and on FQF VORTAC R-306 to HYGEM/FQF 37.9 DME/RADAR and hold.

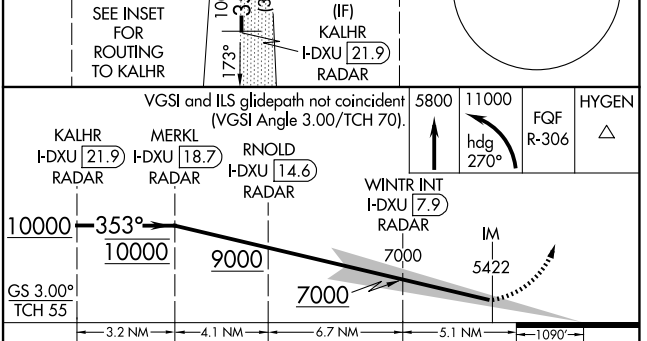
D-ATIS 125.6 379.9	DENVER APP CON 119.3 307.3 (N) 120.35 379.3 (S)	DENVER TOWER 135.3 351.95	GND CON 121.35 379.175 (W) 121.85 377.1 (E)
------------------------------	---	-------------------------------------	---



ELEV 5434 TDZE 5327



HIRL all Rwys
TDZL/RCLS Rwys 7, 16L, 16R, 17R, 26, 34L, 34R, 35L, 35R



CATEGORY	A	B	C	D
S-ILS 34L	CAT II RA 108/12 100 DA 5427			
S-ILS 34L	CAT III RVR 03			

CATEGORY II & III ILS - SPECIAL AIRCREW & AIRCRAFT CERTIFICATION REQUIRED

SW-1, 16 APR 2026 to 14 MAY 2026

SW-1, 16 APR 2026 to 14 MAY 2026