

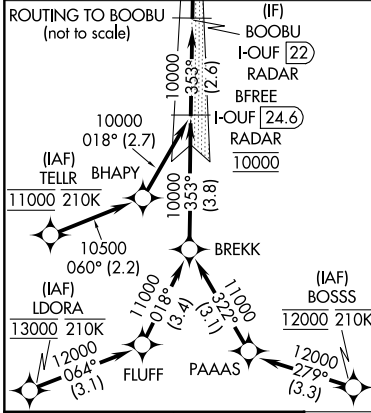
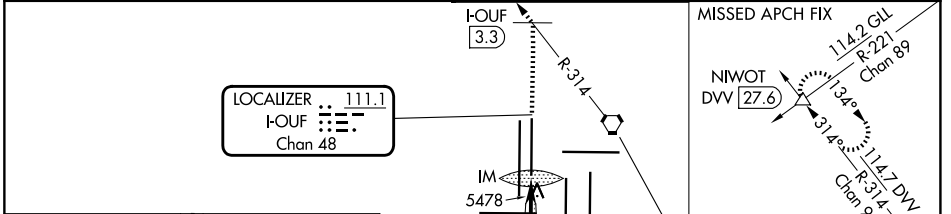
LOC/DME I-OUF 111.1 Chan 48	APP CRS 353°	Rwy Ldg TDZE 5354 Apt Elev 5434
--	------------------------	---

ILS RWY 34R (CAT II & III)

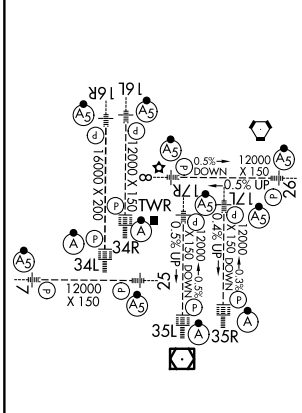
DENVER INTL (DEN)

RNP APCH - GPS. From LDORA, BOSSS, TELLR. DME or RADAR required.	ALSF-2	MISSED APPROACH: Climb to 10000 on heading 353° to I-OUF 3.3 DME north of I-OUF and on DVV VORTAC R-314 to NIWOT INT/DVV 27.6 DME and hold.
---	--------	---

D-ATIS 125.6 379.9	DENVER APP CON 119.3 307.3 (N) 120.35 379.3 (S)	DENVER TOWER 135.3 351.95	GND CON 121.35 379.175 (W) 121.85 377.1 (E)
------------------------------	---	-------------------------------------	---



ELEV 5434	D	TDZE 5354
-----------	----------	-----------



HIRL all Rwys
TDZL/RCLS Rwys 7, 16L, 16R, 17R, 26, 34L, 34R, 35L, 35R



VGSi and ILS glidepath not coincident (VGSi Angle 3.00/TCH 63).			
BOOBU I-OUF 22 RADAR	BENG I-OUF 18.7 RADAR	BOENG I-OUF 14 RADAR	CORDE I-OUF 7.1 RADAR
10000	9000	7000	5457
3.2 NM	4.7 NM	6.9 NM	5 NM
10000	9000	7000	5457
GS 3.00° TCH 55	3.53°	10000	1071'

CATEGORY	A	B	C	D
S-ILS 34R	CAT II RA 110/12 100 DA 5454			
S-ILS 34R	CAT III RVR 03			

CATEGORY II & III ILS - SPECIAL AIRCREW & AIRCRAFT CERTIFICATION REQUIRED

SW-1, 16 APR 2026 to 14 MAY 2026

SW-1, 16 APR 2026 to 14 MAY 2026