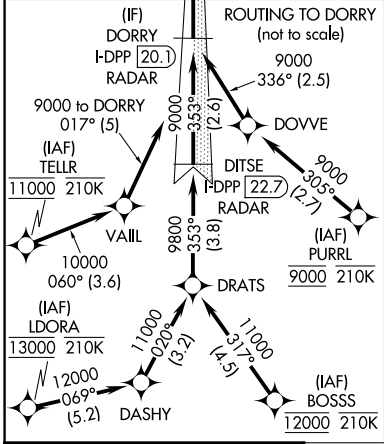
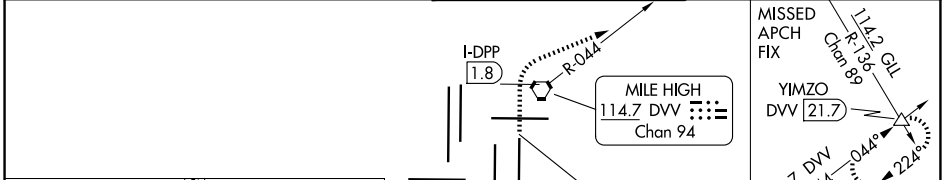


LOC/DME I-DPP 110.15 Chan 38(Y)	APP CRS 353°	Rwy Ldg 12000 TDZE 5370 Apt Elev 5434
---	------------------------	--

ILS RWY 35R (SA CAT I)

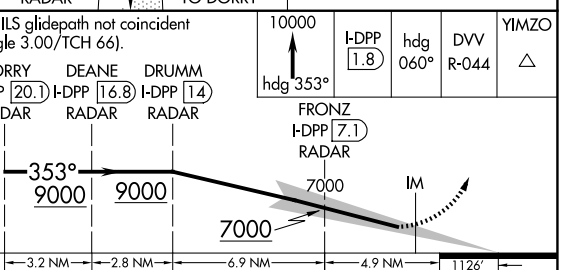
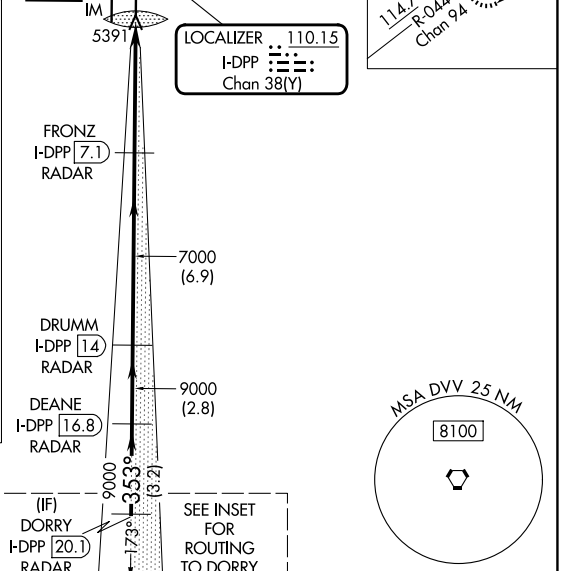
DENVER INTL (DEN)

RNP APCH - GPS. From BOSSS, LDORA, PURRL or TELLR.		ALSF-2 	MISSED APPROACH: Climb to 10000 on heading 353° to 1.8 DME north of I-DPP and continue climb on heading 060° to DVV VORTAC R-044 to YIMZO INT/DVV 21.7 DME and hold.
DME or RADAR required.			
Requires specific OPSPEC, MSPEC, or LOA approval. Simultaneous approach authorized.			
D-ATIS 125.6 379.9	DENVER APP CON 119.3 307.3 (N) 120.35 379.3 (S)	DENVER TOWER 132.35 239.275	GND CON 121.35 379.175 (W) 121.85 377.1 (E)



ELEV 5434	D	TDZE 5370
-----------	----------	-----------

HIRL all Rwys
TDZL/RCLS Rwys 7, 16L, 16R, 17R, 26, 34L, 34R, 35L, 35R



VGSI and ILS glidepath not coincident (VGSI Angle 3.00/TCH 66).	10000 hdg 353°	I-DPP 1.8	hdg 060°	DVV R-044	YIMZO △
DORRY I-DPP 20.1 RADAR	DEANE I-DPP 16.8 RADAR	DRUMM I-DPP 14 RADAR	FRONZ I-DPP 7.1 RADAR	IM	
9000	9000	9000	7000		
GS 3.00° TCH 55					
CATEGORY A	B	C	D		
S-ILS 35R	RA 161/14 150 DA 5520				

SA CATEGORY I ILS - SPECIAL AIRCREW & AIRCRAFT CERTIFICATION REQUIRED

SW-1, 16 APR 2026 to 14 MAY 2026

SW-1, 16 APR 2026 to 14 MAY 2026