

RNAV (RNP) Z RWY 16R

DENVER INTL (DEN)

APP CRS 170°	Rwy Ldg 16000
	TDZE 5326
	Apt Elev 5434

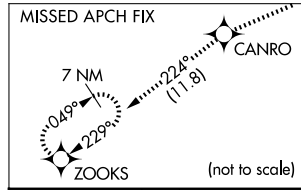
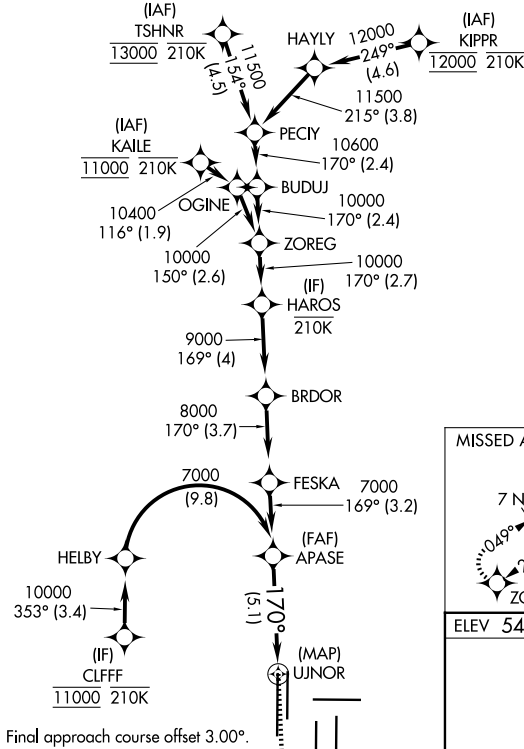
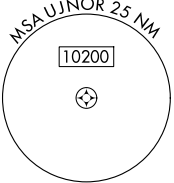
RNP AR APCH - GPS. Authorization required. From CLIFF: RF.

▼ For uncompensated Baro-VNAV systems, procedure NA below -26°C or above 54°C. Simultaneous approach authorized. For inop ALS, increase RNP 0.30 all Cats visibility to RVR 4500.

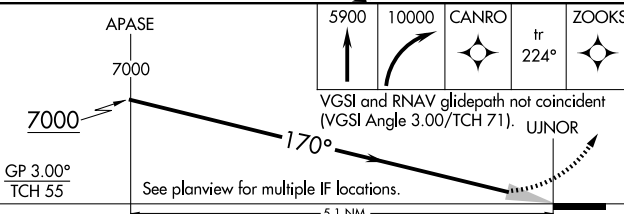
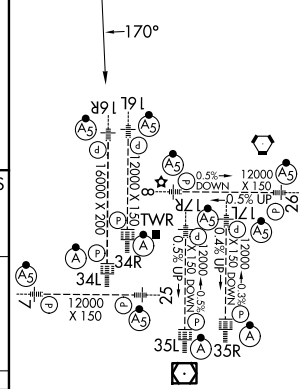


MISSED APPROACH: Climb to 5900 then climbing right turn to 10000 direct CANRO and on track 224° to ZOOKS and hold.

D-ATIS 125.6 379.9	DENVER APP CON 119.3 307.3 (N) 120.35 379.3 (S)	DENVER TOWER 135.3 351.95	GND CON 121.35 379.175 (W) 121.85 377.1 (E)
------------------------------	---------------------------------------------------------------------	-------------------------------------	-----------------------------------------------------------------



ELEV 5434	D	TDZE 5326
-----------	----------	-----------



CATEGORY	A	B	C	D
RNP 0.30 DA	5598/24 272 (200-½)			

AUTHORIZATION REQUIRED

HIRL all Rwys
TDZL/RCLS Rwys 7, 16L, 16R, 17R, 26, 34L, 34R, 35L, 35R

SW-1, 16 APR 2026 to 14 MAY 2026

SW-1, 16 APR 2026 to 14 MAY 2026