

APP CRS <b>173°</b>	Rwy Ldg TDZE Apt Elev	<b>12000</b> <b>5339</b> <b>5434</b>
------------------------	-----------------------------	--

# RNAV (RNP) Z RWY 17L

DENVER INTL (DEN)

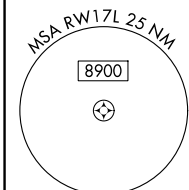
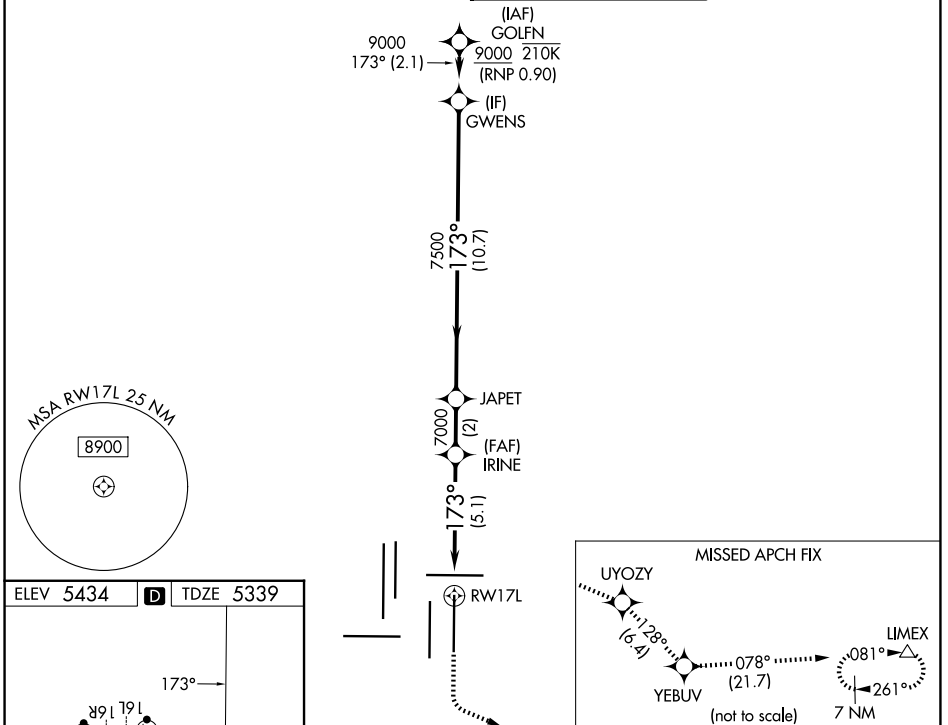
RNP AR APCH - GPS, min RNP 0.90. Authorization required.

For uncompensated Baro-VNAV systems, procedure NA below -26°C or above 54°C. Simultaneous approach authorized. For inop ALS, increase RNP 0.10 all Cats visibility to RVR 4500 and RNP 0.30 all Cats visibility to RVR 5500.

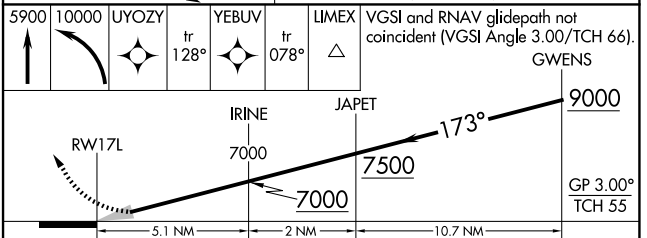
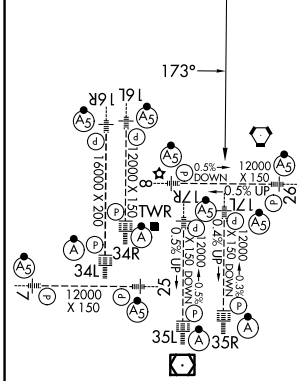
MALSR

MISSED APPROACH: Climb to 5900, then climbing left turn to 10000 direct UYOZY and track 128° to YEBUV and track 078° to LIMEX and track 078° to LIMEX and hold.

D-ATIS <b>125.6 379.9</b>	DENVER APP CON <b>119.3 307.3 (N)</b> <b>120.35 379.3 (S)</b>	DENVER TOWER <b>132.35 239.275</b>	GND CON <b>121.35 379.175 (W)</b> <b>121.85 377.1 (E)</b>
------------------------------	---	---------------------------------------	---



ELEV 5434	<b>D</b>	TDZE 5339
-----------	----------	-----------



CATEGORY	A	B	C	D
RNP 0.10 DA		5600/24	261 (200-1/2)	
RNP 0.30 DA		5716/35	377 (300-3/4)	

HIRL all Rwys  
TDZL/RCLS Rwys 7, 16L, 16R, 17R, 26, 34L, 34R, 35L, 35R

**AUTHORIZATION REQUIRED**

SW-1, 16 APR 2026 to 14 MAY 2026

SW-1, 16 APR 2026 to 14 MAY 2026