

RNAV (RNP) Z RWY 17R

DENVER INTL (DEN)

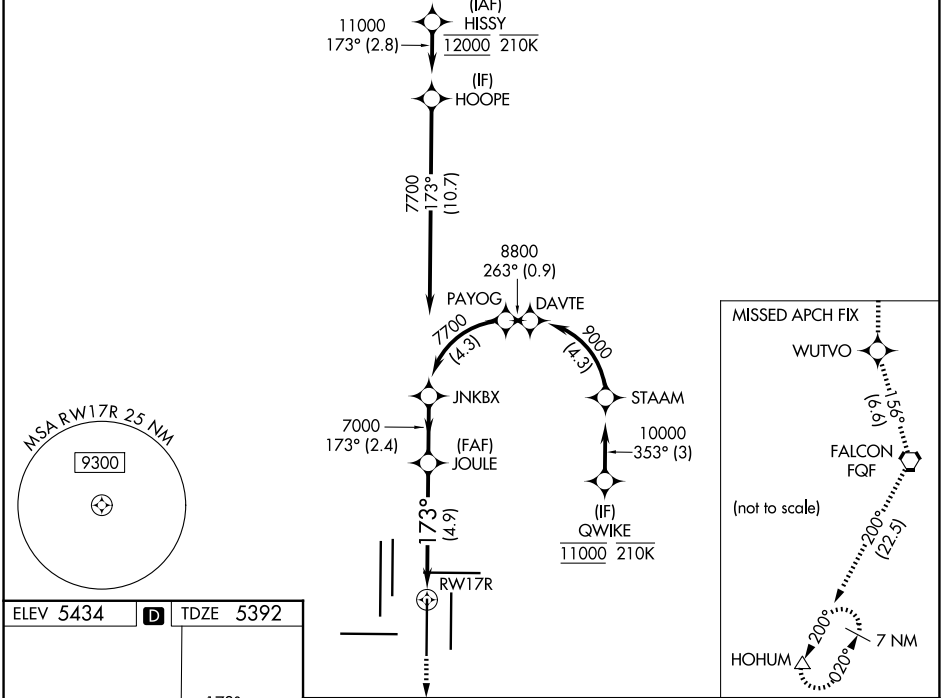
APP CRS	Rwy Ldg	12000
173°	TDZE	5392
	Apt Elev	5434

RNP AR APCH - GPS. Authorization required. From STAAM or PAYOG: RF.

MALSR	MISSED APPROACH: Climb to 11000 direct WUTVO and track 156° to FGF VORTAC and track 200° to HOHUM and hold.
-------	---

Simultaneous approach authorized. For uncompensated Baro-VNAV systems, procedure NA below -26°C or above 54°C. For inop ALS, increase RNP 0.30 all Cats visibility to 1½ SM.

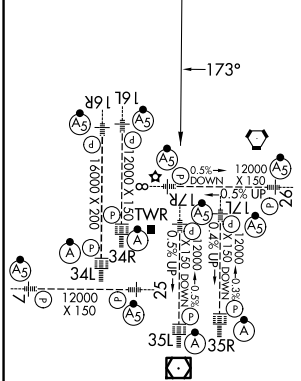
D-ATIS 125.6 379.9	DENVER APP CON 119.3 307.3 (N) 120.35 379.3 (S)	DENVER TOWER 124.3 322.45	GND CON 121.35 379.175 (W) 121.85 377.1 (E)
------------------------------	---	-------------------------------------	---



SW-1, 16 APR 2026 to 14 MAY 2026

SW-1, 16 APR 2026 to 14 MAY 2026

ELEV 5434	D	TDZE 5392
-----------	----------	-----------



HIRL all Rwys
TDZL/RCLS Rwys 7, 16L, 16R, 17R, 26, 34L, 34R, 35L, 35R

11000	WUTVO	tr 156°	FGF	tr 200°	HOHUM	VGSI and RNAV glidepath not coincident (VGSI Angle 3.00/TCH 69).
See planview for multiple IF locations.						JOULE
RWY 17R						JNKBX
4.9 NM						GP 3.00° TCH 55

CATEGORY	A	B	C	D
RNP 0.10 DA	5722/26 330 (300-½)			
RNP 0.30 DA	5894/55 502 (500-1)			

AUTHORIZATION REQUIRED