

RNAV (RNP) Z RWY 26


DENVER INTL (DEN)

APP CRS 263°	Rwy Ldg TDZE Apt Elev	12000 5309 5434
------------------------	-----------------------------	--

RNP AR APCH.

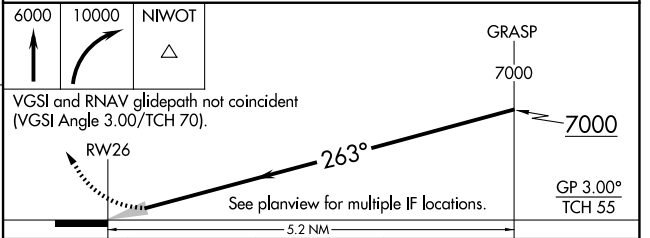
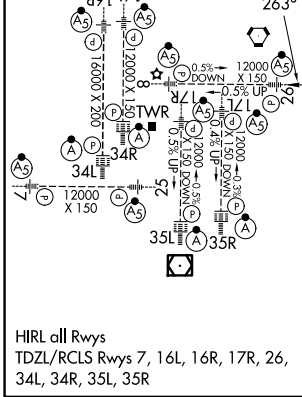
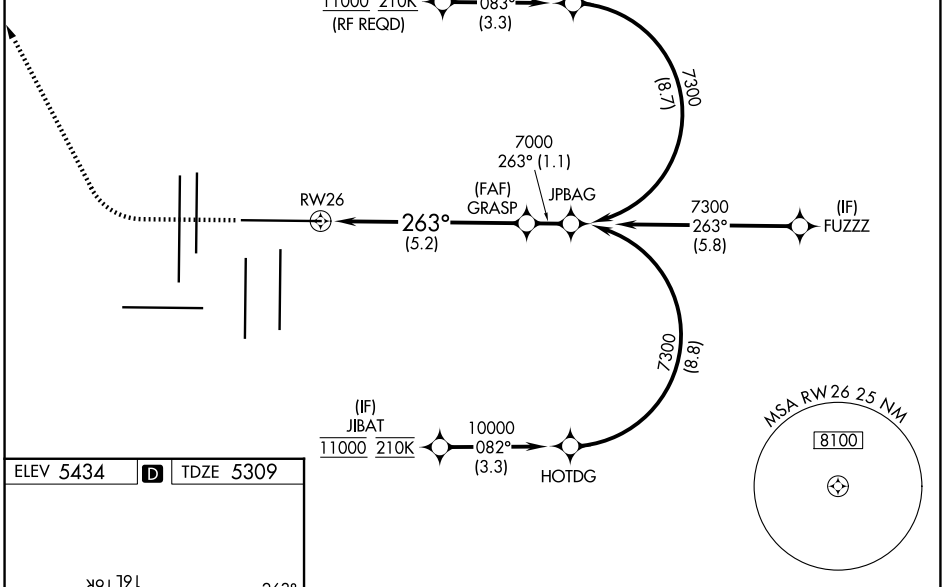
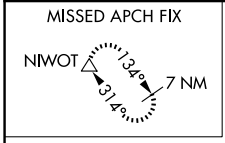
Simultaneous approach authorized. For uncompensated Baro-VNAV systems, procedure NA below -23°C or above 54°C. For inop ALS, increase RNP 0.15 all Cats visibility to RVR 4000, and increase RNP 0.30 all Cats visibility to RVR 4500.

MALSR



MISSED APPROACH: Climb to 6000 then climbing right turn to 10000 direct NIWOT and hold.

D-ATIS 125.6 379.9	DENVER APP CON 119.3 307.3 (N) 120.35 379.3 (S)	DENVER TOWER 132.35 239.275	GND CON 121.35 379.175 (W) 121.85 377.1 (E)
------------------------------	---	---------------------------------------	---



CATEGORY	A	B	C	D
RNP 0.15 DA		5566/24	257 (200-½)	
RNP 0.30 DA		5611/24	302 (200-½)	

AUTHORIZATION REQUIRED

SW-1, 16 APR 2026 to 14 MAY 2026

SW-1, 16 APR 2026 to 14 MAY 2026