

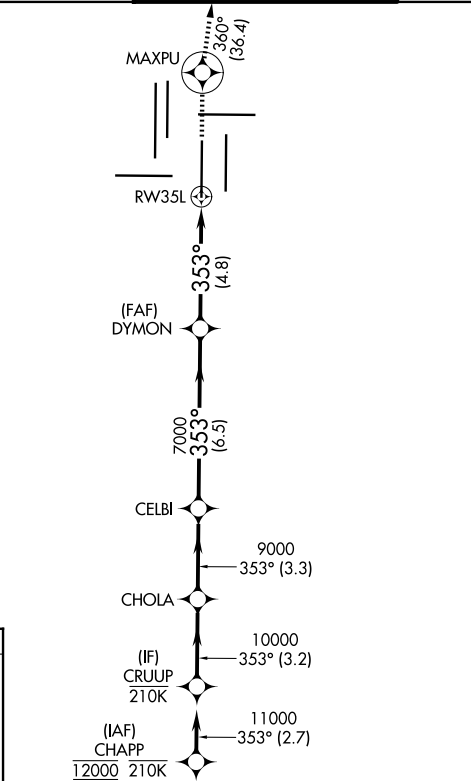
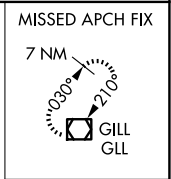
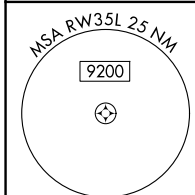
APP CRS 353°	Rwy Ldg TDZE Apt Elev	12000 5434 5434
------------------------	-----------------------------	--

RNAV (RNP) Z RWY 35L

DENVER INTL (DEN)

RNP AR APCH - GPS. Authorization required.	ALSF-2	MISSED APPROACH: Climb to 10000 direct MAXPU and track 360° to GLL VOR/DME and hold.
<p>▼ For uncompensated Baro-VNAV systems, procedure NA below -26°C or above 54°C. For inop ALS, increase RNP 0.10 all Cats visibility to RVR 4500. Simultaneous approach authorized.</p>		

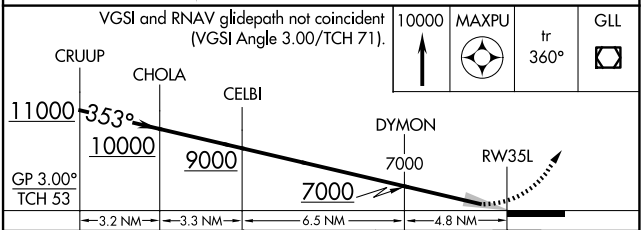
D-ATIS 125.6 379.9	DENVER APP CON 119.3 307.3 (N) 120.35 379.3 (S)	DENVER TOWER 124.3 322.45	GND CON 121.35 379.175 (W) 121.85 377.1 (E)
------------------------------	---	-------------------------------------	---



ELEV 5434 **D** TDZE 5434

HIRL all Rwys
TDZL/RCLS Rwys 7, 16L, 16R, 17R, 26, 34L, 34R, 35L, 35R

353°



CATEGORY	A	B	C	D
RNP 0.10 DA		5695/24	261 (300-1/2)	
RNP 0.30 DA		5760/26	326 (400-1/2)	

AUTHORIZATION REQUIRED

SW-1, 16 APR 2026 to 14 MAY 2026

SW-1, 16 APR 2026 to 14 MAY 2026