


RNAV (RNP) Z RWY 35R

DENVER INTL (DEN)

APP CRS 353°	Rwy Ldg TDZE Apt Elev	12000 5370 5434
------------------------	-----------------------------	--

RNP AR APCH - GPS. Authorization required. From MSIMS: RF.

▼ For uncompensated Baro-VNAV systems, procedure NA below -26°C or above 54°C. For inop ALS, increase RNP 0.10 all Cats visibility to RVR 4500. Simultaneous approach authorized.

ALSF-2 

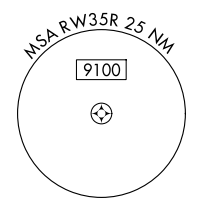
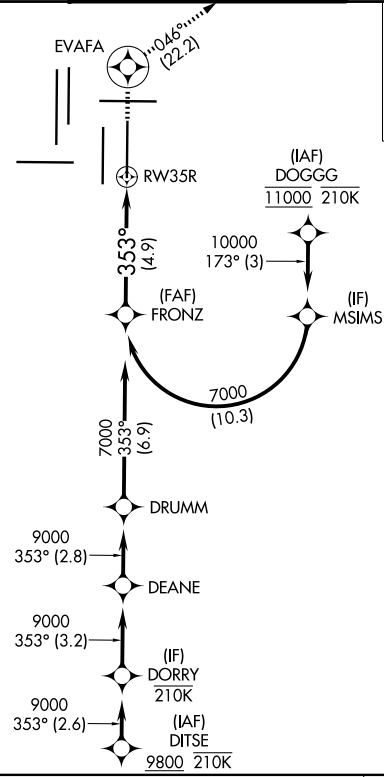
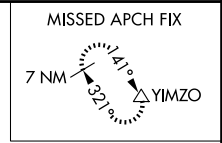
MISSED APPROACH: Climb to 10000 direct EVAFA and on track 046° to YIMZO and hold.

D-ATIS
125.6 379.9

DENVER APP CON
119.3 307.3 (N)
120.35 379.3 (S)

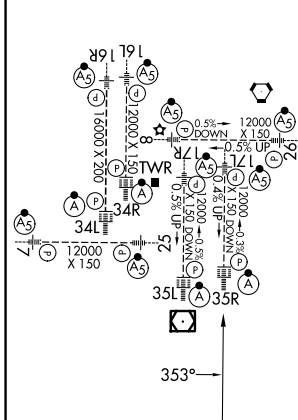
DENVER TOWER
132.35 239.275

GND CON
121.35 379.175 (W)
121.85 377.1 (E)



ELEV 5434 **D** TDZE 5370

HIRL all Rwys
TDZL/RCLS Rwys 7, 16L, 16R, 17R, 26, 34L, 34R, 35L, 35R




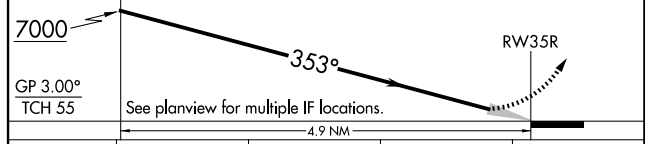
VGSI and RNAV glidepath not coincident (VGSI Angle 3.00/TCH 66).

FRONZ

7000

10000 EVAFA tr YIMZO

\uparrow  046° \triangle



CATEGORY	A	B	C	D
RNP 0.10 DA		5631/24	261 (200- $\frac{1}{2}$)	
RNP 0.30 DA		5702/26	332 (300- $\frac{1}{2}$)	

AUTHORIZATION REQUIRED

SW-1, 16 APR 2026 to 14 MAY 2026

SW-1, 16 APR 2026 to 14 MAY 2026