

WAAS CH 81830 W17A	APP CRS 173°	Rwy Ldg TDZE 12000 5339	Apt Elev 5434
--	------------------------	---	-------------------------


RNAV (GPS) Y RWY 17L

DENVER INTL (DEN)

RNP APCH - GPS.

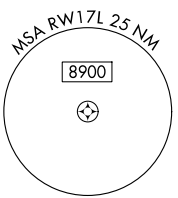
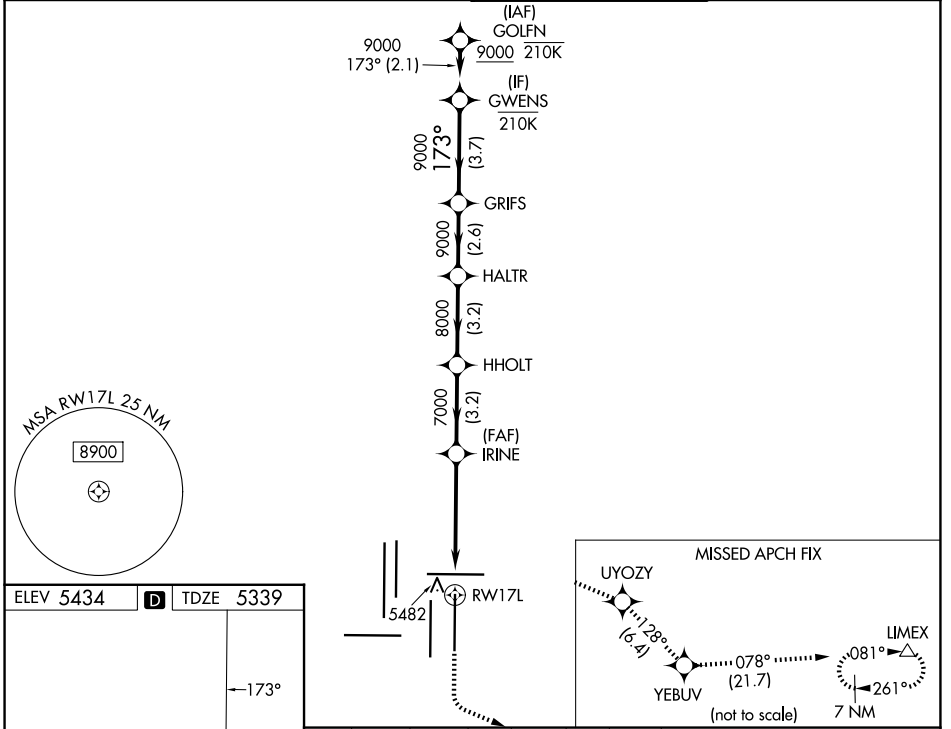
Simultaneous approach authorized. Use of FD or AP required during simultaneous operations. LNAV procedure NA during simultaneous operations.
 For uncompensated Baro-VNAV systems, LNAV/VNAV NA below -26°C or above 54°C. For inop ALS increase LNAV/VNAV all Cats visibility to RVR 4500.
 *RVR 1800 authorized with use of FD or AP or HUD to DA.

MALSR

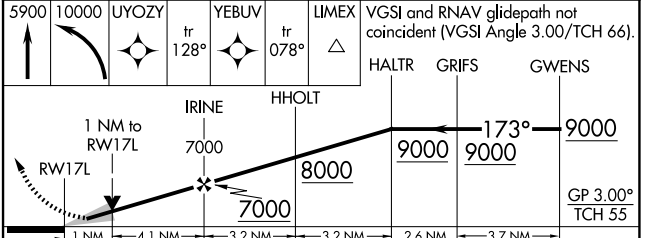
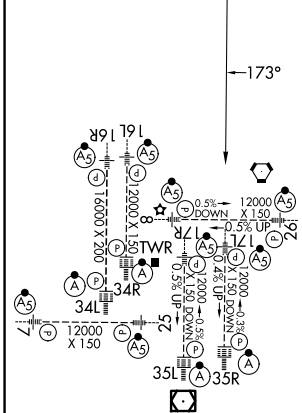


MISSED APPROACH: Climb to 5900, then climbing left turn to 10000 direct UYOZY and track 128° to YEBUV and track 078° to LIMEX and hold.

D-ATIS 125.6 379.9	DENVER APP CON 119.3 307.3 (N) 120.35 379.3 (S)	DENVER TOWER 132.35 239.275	GND CON 121.35 379.175 (W) 121.85 377.1 (E)
------------------------------	---	---------------------------------------	---



ELEV 5434	D	TDZE 5339
-----------	----------	-----------



5900	10000	UYOZY	tr 128°	YEBUV	tr 078°	LIMEX	VGSI and RNAV glidepath not coincident (VGSI Angle 3.00/TCH 66).
							HALTR GRIFS GWENS
							IRINE HHOLT
							173° 9000
							GP 3.00° TCH 55
							1 NM 4.1 NM 3.2 NM 2.6 NM 3.7 NM
CATEGORY	A	B	C	D			
LPV DA*		5539/24	200 (200-½)				
LNAV/VNAV DA		5648/24	309 (300-½)				
LNAV MDA	5720/24	381 (300-½)	5720/35	381 (300-⅝)			

HIRL all Rwys
 TDZL/RCLS Rwys 7, 16L, 16R, 17R, 26, 34L, 34R, 35L, 35R

SW-1, 16 APR 2026 to 14 MAY 2026

SW-1, 16 APR 2026 to 14 MAY 2026