

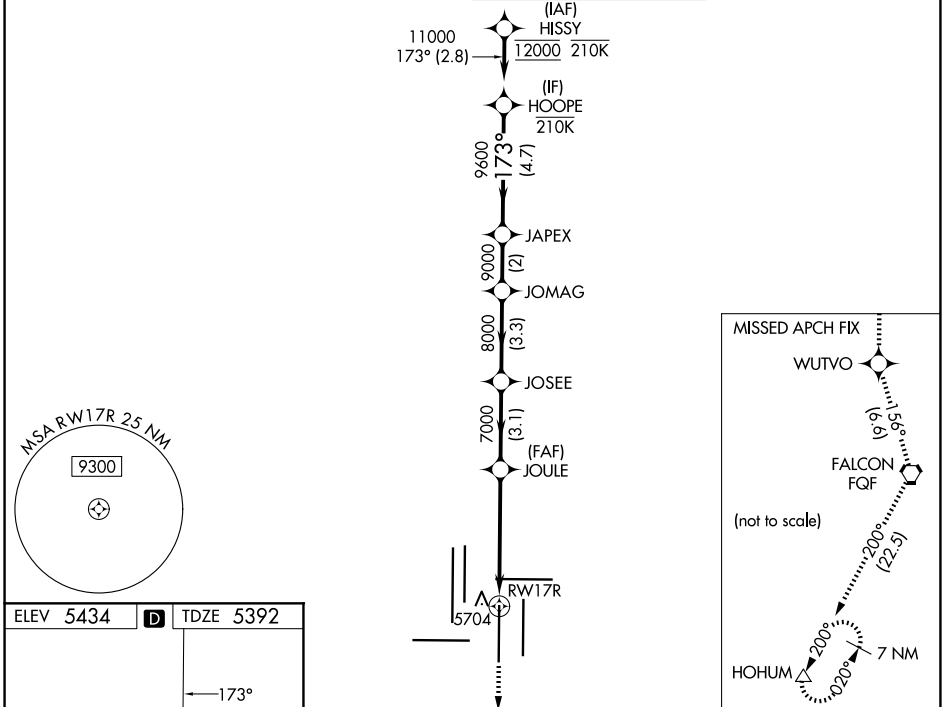
WAAS CH <b>93529</b> <b>W17B</b>	APP CRS <b>173°</b>	Rwy Ldg TDZE <b>5392</b> Apt Elev <b>5434</b>
--	------------------------	---

# RNAV (GPS) Y RWY 17R

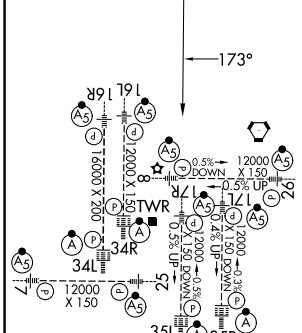
DENVER INTL (DEN)

RNP APCH - GPS.	MALS R	MISSED APPROACH: Climb to 11000 direct WUTVO and track 156° to FQF VORTAC and track 200° to HOHUM and hold.
<p>▼ LNAV procedure NA during simultaneous operations. Use of FD or AP required during simultaneous operations. For uncompensated Baro-VNAV systems, LNAV/VNAV NA below -26°C or above 54°C. Simultaneous approach authorized. For inop ALS, increase LNAV/VNAV all Cats visibility to 1½ SM.</p>		

D-ATIS <b>125.6 379.9</b>	DENVER APP CON <b>119.3 307.3 (N)</b> <b>120.35 379.3 (S)</b>	DENVER TOWER <b>124.3 322.45</b>	GND CON <b>121.35 379.175 (W)</b> <b>121.85 377.1 (E)</b>
------------------------------	---	-------------------------------------	---



ELEV 5434	<b>D</b>	TDZE 5392
-----------	----------	-----------



11000	WUTVO	tr 156°	FQF	tr 200°	HOHUM	VGSi and RNAV glidepath not coincident (VGSi Angle 3.00/TCH 69).					
						JOSE	JOMAG	JAPEX	HOOPE	11000	
						JOULE					
						7000	8000	9000	9600		
						1.5	3.4 NM	3.1 NM	3.3 NM	2 NM	4.7 NM
											GP 3.00° TCH 55
CATEGORY	A		B		C		D				
LPV DA			5592/18		200 (200-½)						
LNAV/VNAV DA			5857/50		465 (500-1)						
LNAV MDA	5940/24		548 (600-½)		5940/60		548 (600-1¼)				

HIRL all Rwys  
TDZL/RCLS Rwwys 7, 16L, 16R, 17R, 26, 34L, 34R, 35L, 35R

SW-1, 16 APR 2026 to 14 MAY 2026

SW-1, 16 APR 2026 to 14 MAY 2026