

WAAS CH 40428 W25A	APP CRS 263°	Rwy Ldg 12000 TDZE 5355 Apt Elev 5434
--	------------------------	--

RNAV (GPS) Y RWY 25

DENVER INTL (DEN)

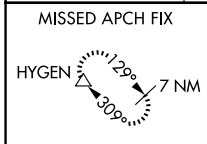
▼ For uncompensated Baro-VNAV systems, LNAV/VNAV NA below -25°C (-13°F) or above 46°C (116°F). Simultaneous approach authorized with Rwy 26. DME/DME RNP-0.3 NA. Use of FD or AP providing track guidance required during simultaneous operations. LNAV procedure NA during simultaneous operations. For inoperative MALSR, increase LNAV/VNAV all Cats visibility to RVR 4500. #RVR 1800 authorized with use of FD or AP or HUD to DA.

MALSR

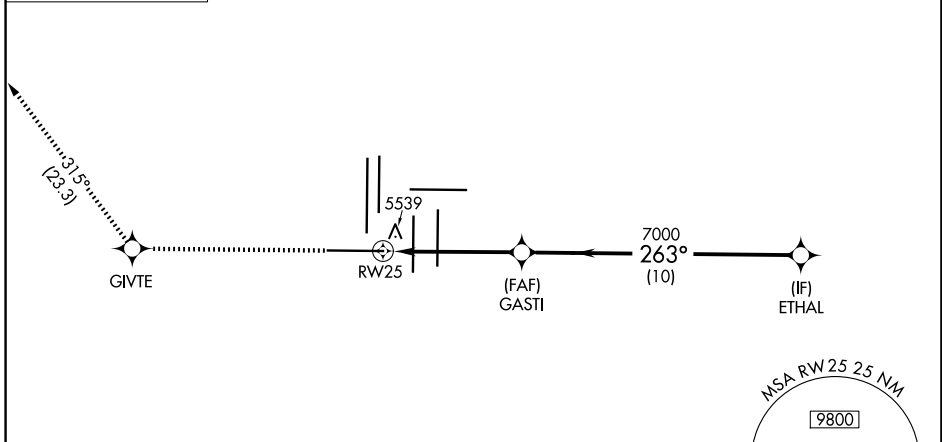


MISSED APPROACH: Climb to 10000 direct GIVTE and on track 315° to HYGEN and hold.

D-ATIS 125.6 379.9	DENVER APP CON 119.3 307.3 (N) 120.35 379.3 (S)	DENVER TOWER 128.75 273.55	GND CON 121.35 379.175 (W) 121.85 377.1 (E)
------------------------------	---	--------------------------------------	---



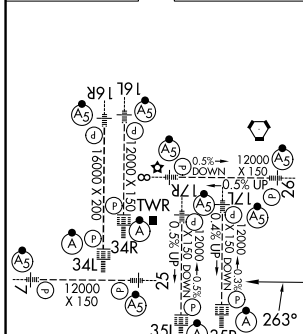
RADAR REQUIRED



SW-1, 16 APR 2026 to 14 MAY 2026

SW-1, 16 APR 2026 to 14 MAY 2026

ELEV 5434	D	TDZE 5355
-----------	----------	-----------



10000	GIVTE	tr 315°	HYGEN	VGSI and RNAV glidepath not coincident (VGSI Angle 3.00/TCH 83).	ETHAL
*LNAV only					10000
*1.1 NM to RWY 25					GP 3.00° TCH 55
1.1 NM					3.9 NM
10 NM					

HIRL all Rwys
TDZL/RCLS Rwys 7, 16L, 16R, 17R, 26, 34L, 34R, 35L, 35R

CATEGORY	A	B	C	D
LPV DA#	5555/24 200 (200-½)			
LNAV/VNAV DA	5700/30 345 (300-⅝)			
LNAV MDA	5800/24	445 (400-½)	5800/45	445 (400-⅞)