

WAAS CH <b>58128</b> <b>W26A</b>	APP CRS <b>263°</b>	Rwy Ldg <b>12000</b> TDZE <b>5309</b> Apt Elev <b>5434</b>
--	------------------------	--

# RNAV (GPS) Y RWY 26

DENVER INTL (DEN)

RNP APCH.  
RADAR required.

▼ For uncompensated Baro-VNAV systems, LNAV/VNAV NA below -25°C or above 46°C. Simultaneous approach authorized with Rwy 25. For inoperative ALS, increase LNAV/VNAV all Cats visibility to RVR 4000 and LNAV Cat C/D visibility to RVR 5500. LNAV procedure NA during simultaneous operations. Use of FD or AP providing RNAV track guidance required during simultaneous operations.

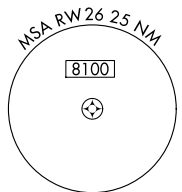
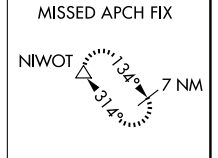
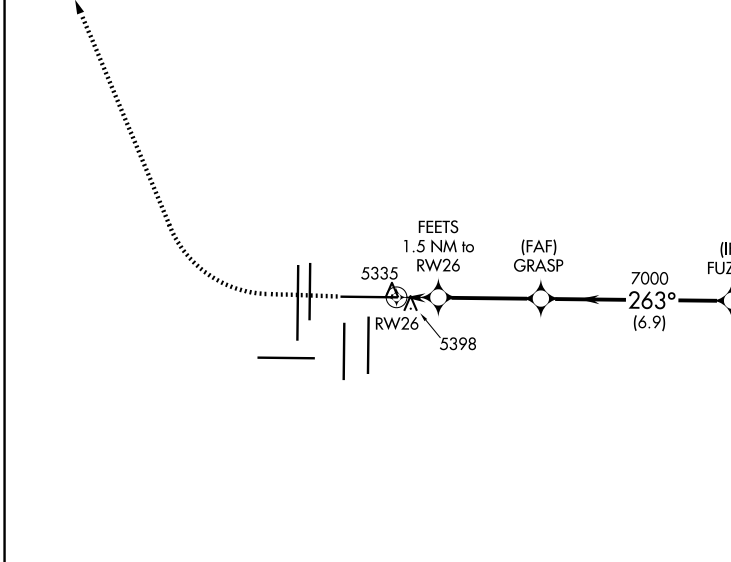
MALSRL  
MISSED APPROACH:  
Climb to 6000 then climbing right turn to 11000 direct NIWOT and hold.

D-ATIS  
**125.6 379.9**

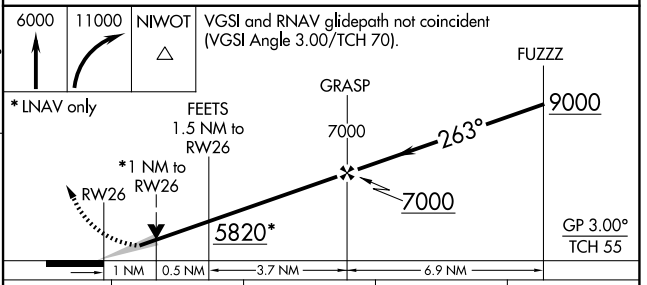
DENVER APP CON  
**119.3 307.3 (N)**  
**120.35 379.3 (S)**

DENVER TOWER  
**132.35 239.275**

GND CON  
**121.35 379.175 (W)**  
**121.85 377.1 (E)**



ELEV 5434 **D** TDZE 5309



CATEGORY	A	B	C	D
LPV DA		5509/18	200 (100-½)	
LNAV/VNAV DA		5559/24	250 (200-½)	
LNAV MDA	5660/24	351 (300-½)	5660/30	351 (300-⅝)

HIRL all Rwys  
TDZL/RCLS Rwys 7, 16L, 16R, 17R, 26, 34L, 34R, 35L, 35R

SW-1, 16 APR 2026 to 14 MAY 2026

SW-1, 16 APR 2026 to 14 MAY 2026