

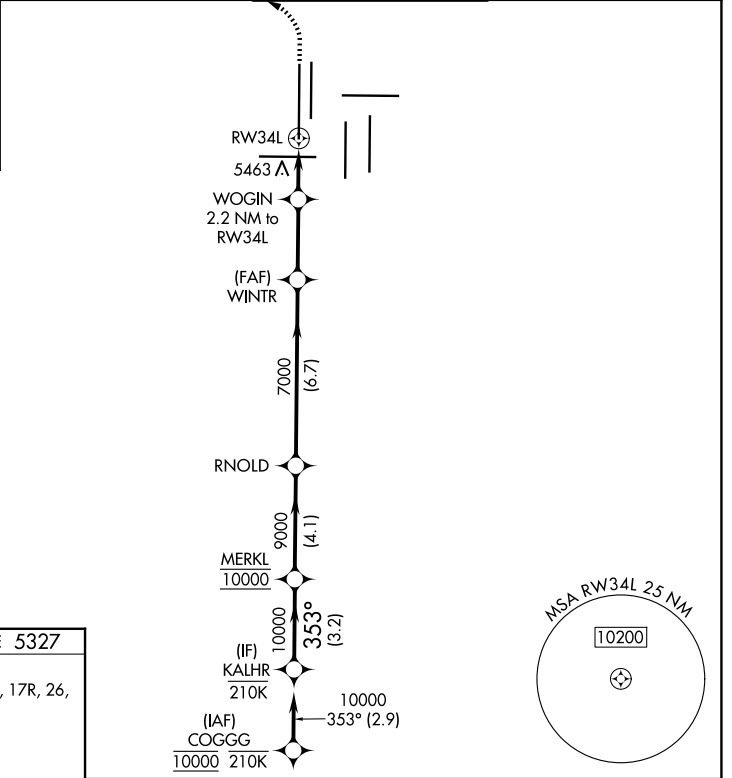
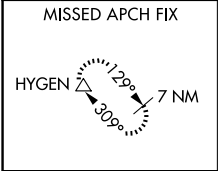
WAAS CH 45619 W34A	APP CRS 353°	Rwy Ldg TDZE 5327 Apt Elev 5434
--	------------------------	---

RNAV (GPS) Y RWY 34L

DENVER INTL (DEN)

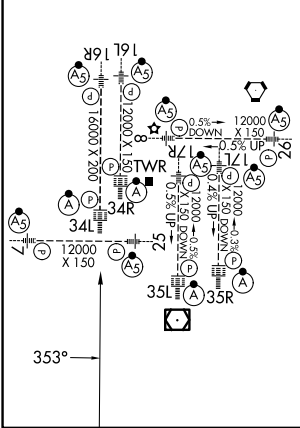
RNP APCH - GPS.	ALSF-2	MISSED APPROACH: Climb to 5900 then climbing left turn to 11000 direct HYGEN and hold.
<p>▼ For uncompensated Baro-VNAV systems, LNAV/VNAV NA below -22°C or above 54°C. LNAV procedure NA during simultaneous operations. Use of FD or AP required during simultaneous operations. Simultaneous approach authorized.</p>		

D-ATIS 125.6 379.9	DENVER APP CON 119.3 307.3 (N) 120.35 379.3 (S)	DENVER TOWER 135.3 351.95	GND CON 121.35 379.175 (W) 121.85 377.1 (E)
------------------------------	---	-------------------------------------	---



ELEV 5434	D	TDZE 5327
-----------	----------	-----------

HIRL all Rwys
TDZL/RCLS Rwys 7, 16L, 16R, 17R, 26, 34L, 34R, 35L, 35R



KALHR		MERKL		RNOLD		WINTR		WGIN		HYGEN	
10000		9000		7000		6060		5900		11000	
GP 3.00°		TCH 55		7000		6060		WGIN 2.2 NM to RW34L		1 NM to RW34L	
3.2 NM		4.1 NM		6.7 NM		2.9 NM		1.2 NM		1 NM	
CATEGORY A		CATEGORY B		CATEGORY C		CATEGORY D					
LPV DA		5527/18		200 (100-½)							
LNAV/VNAV DA		5664/35		337 (300-⅙)							
LNAV MDA		5720/24		393 (300-½)		5720/35		393 (300-⅙)			

SW-1, 16 APR 2026 to 14 MAY 2026

SW-1, 16 APR 2026 to 14 MAY 2026