

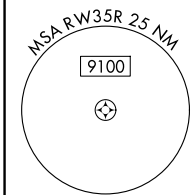
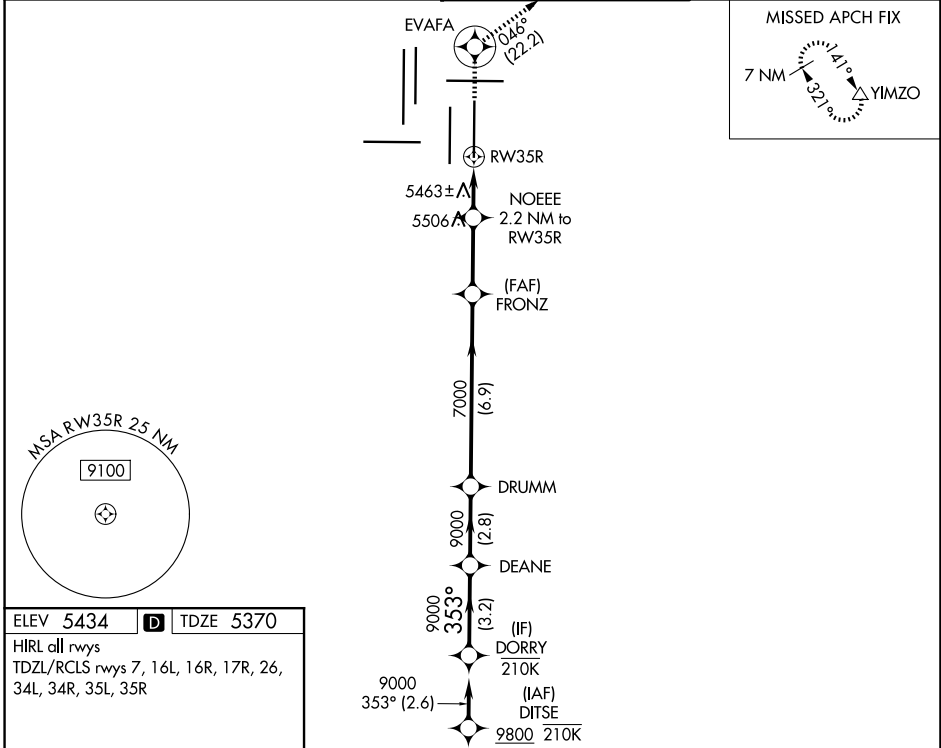
WAAS CH 45719 W35B	APP CRS 353°	Rwy Ldg 12000 TDZE 5370 Apt Elev 5434
--	------------------------	---

RNAV (GPS) Y RWY 35R

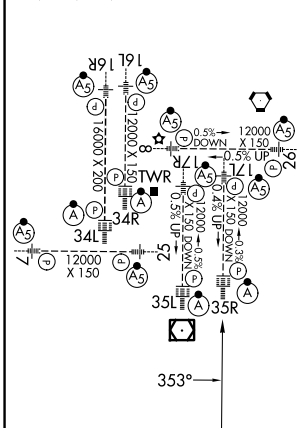
DENVER INTL (DEN)

RNP APCH - GPS. ▼ For uncompensated Baro-VNAV systems, LNAV/VNAV NA below -26°C or above 54°C. For inop ALS, increase LNAV/VNAV all Cats visibility to RVR 4000. LNAV procedure NA during simultaneous operations. Simultaneous approach authorized. Use of FD or AP required during simultaneous operations.		ALSF-2 	MISSED APPROACH: Climb to 10000 direct EVAFA and on track 046° to YIMZO and hold.
---	--	------------	---

D-ATIS 125.6 379.9	DENVER APP CON 119.3 307.3 (N) 120.35 379.3 (S)	DENVER TOWER 132.35 239.275	GND CON 121.35 379.175 (W) 121.85 377.1 (E)
------------------------------	---	---------------------------------------	---



ELEV 5434	D	TDZE 5370
HIRL all rwys		
TDZL/RCLS rwys 7, 16L, 16R, 17R, 26, 34L, 34R, 35L, 35R		



VGSi and RNAV glidepath not coincident (VGSi Angle 3.00/TCH 66).				10000 	EVAFA 	tr 046°	YIMZO
9000 GP 3.00° TCH 55	353° 9000	9000	7000 FRONZ	NOEEE 2.2 NM to RW35R	1.1 NM to RW35R	6120	RW35R
← 3.2 NM → 2.8 NM → 6.9 NM → 2.7 NM → 1.1 NM → 1.1 NM →							

CATEGORY	A	B	C	D
LPV DA		5570/18	200 (200-1/2)	
LNAV/VNAV DA		5620/24	250 (200-1/2)	
LNAV MDA		5800/24	430 (400-1/2)	

SW-1, 16 APR 2026 to 14 MAY 2026

SW-1, 16 APR 2026 to 14 MAY 2026